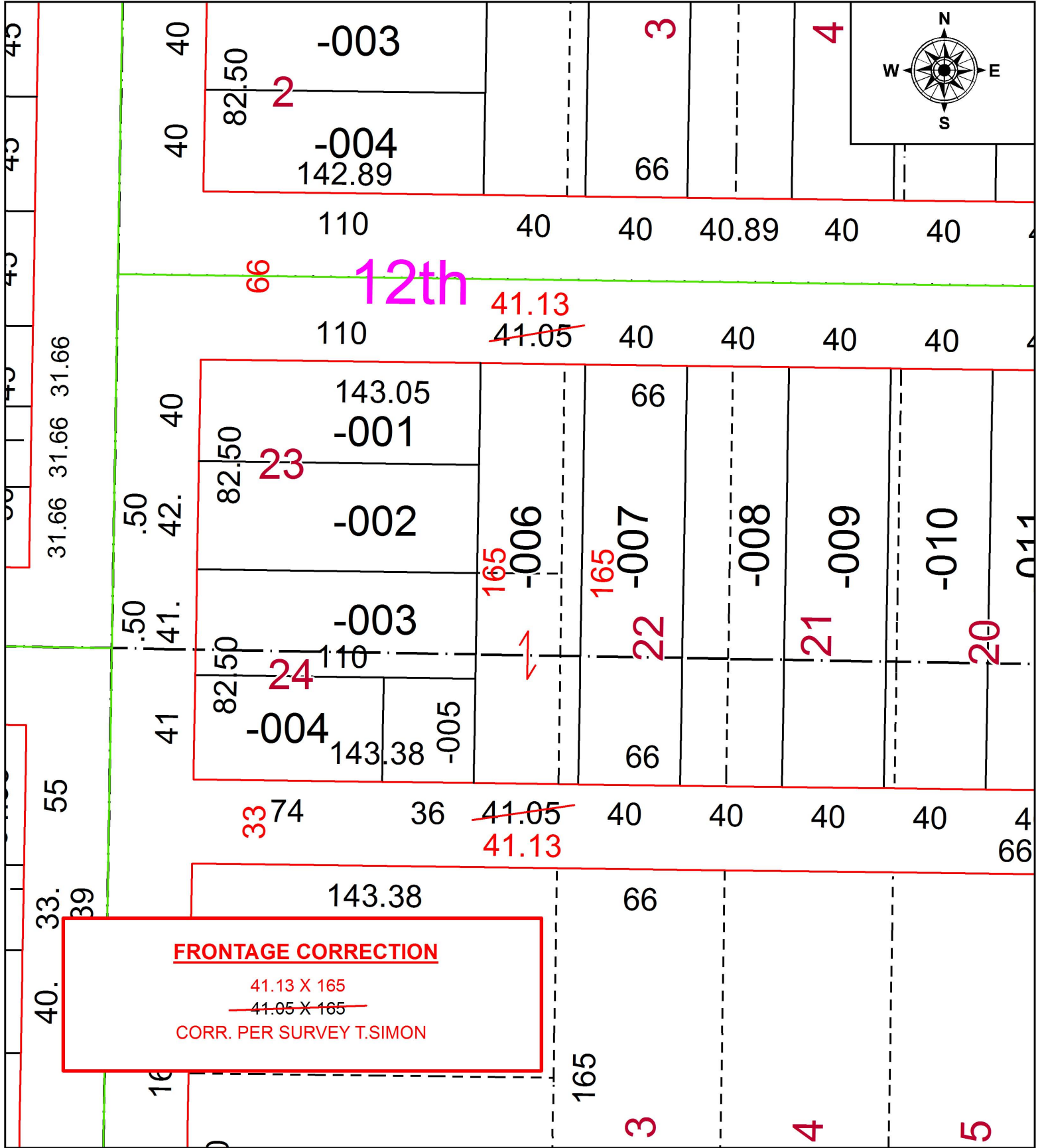


PARENT PARCEL: 06-26-010-102-006

CHILD PARCEL: XX-XX-XXX-XXX-XXX

STARTING POINT: NORTHWEST CORNER OF S/L 23 OF HEMAN ELY'S ADD.

18-03843-D



SPLITS/DEEDS PROCESSED
 LORAIN COUNTY TAX MAP DEPARTMENT
 226 MIDDLE AVE. ELYRIA, OH

SURVEYED BY: THOMAS A. SIMON
 CLOSURE: 1: 500,572
 MAP PAGE(S): 6-137
 APPROVED BY: RRM DATE: 2-16-18
 SCALE: 1" = 50 PRIOR INSTRUMENT: 20170620363