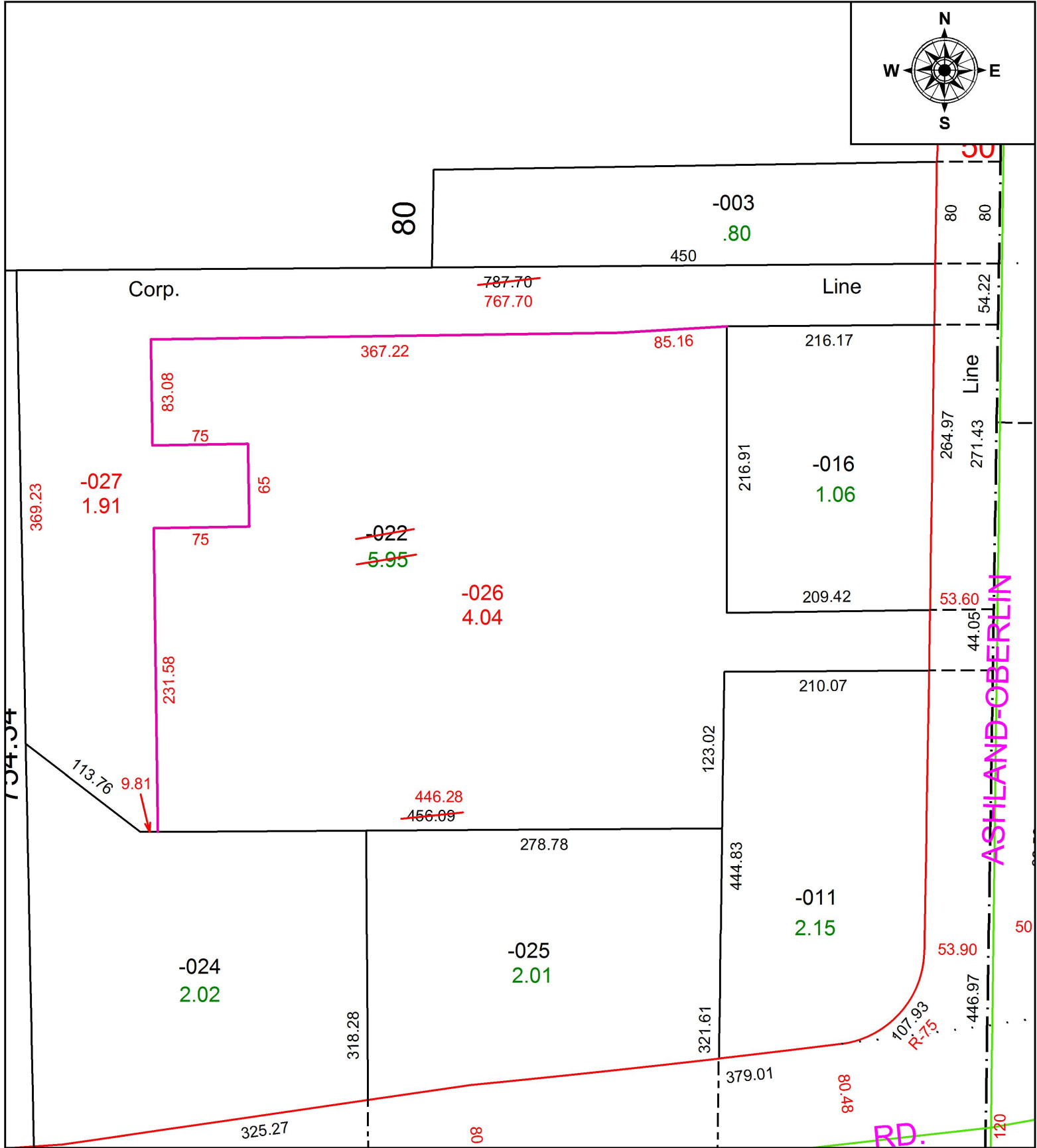


PARENT PARCEL: 14-00-015-000-022

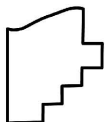
CHILD PARCEL: 14-00-015-000-026, -027

STARTING POINT: INTERSECTION OF C/L OF S.R.58 AND C/L OF S.R.20

18-03841



134.34



SPLITS/DEEDS PROCESSED
 LORAIN COUNTY TAX MAP DEPARTMENT
 226 MIDDLE AVE. ELYRIA, OH

SURVEYED BY: RICHARD J. THOMPSON JR.
 CLOSURE: 1: 345,971
 MAP PAGE(S): 14-00-015
 APPROVED BY: RRM DATE: 7-27-18
 SCALE: 1" = 100 PRIOR INSTRUMENT: 20060175403