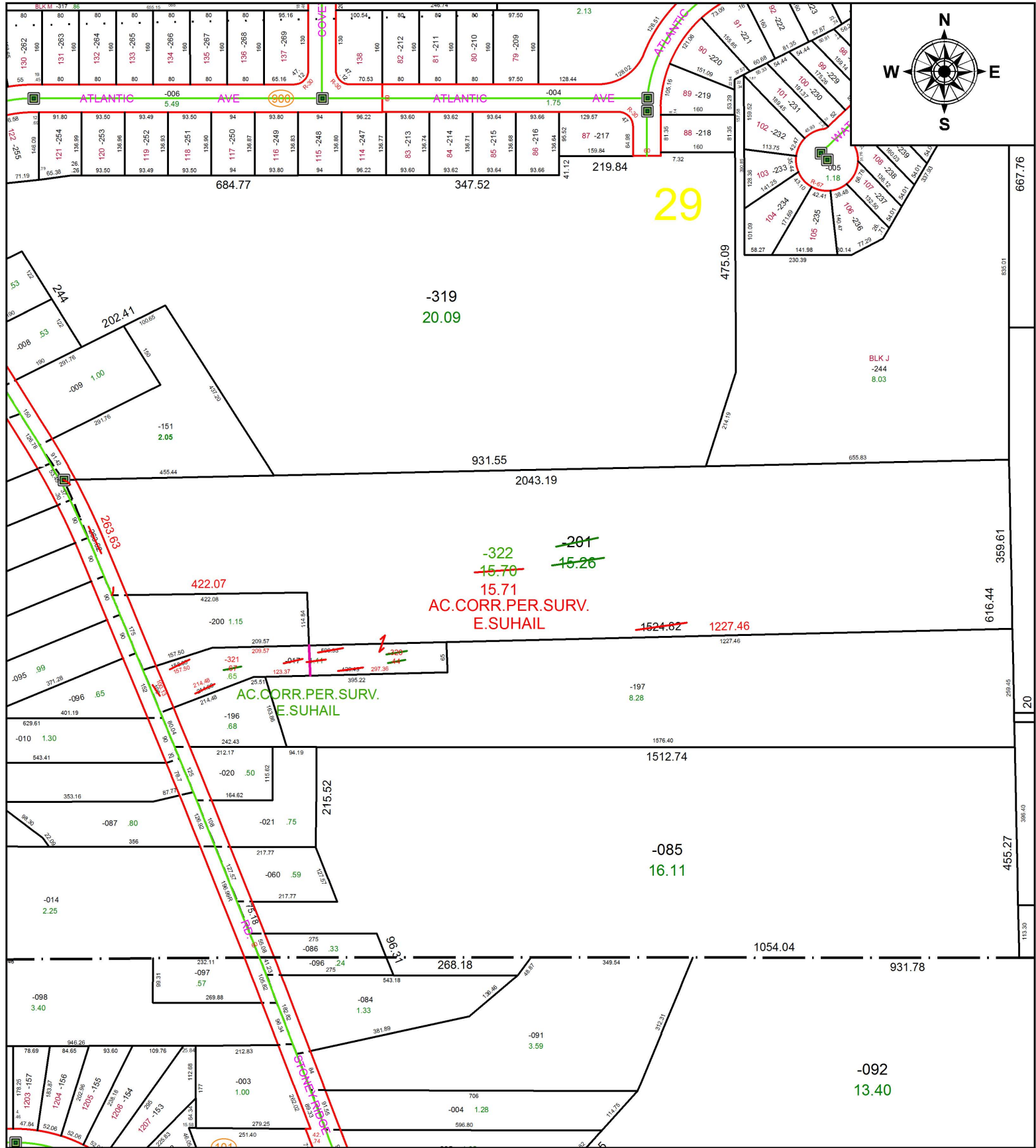


PARENT PARCEL: 07-00-029-000-017, -201

CHILD PARCEL: 07-00-029-000-320 THRU -322

STARTING POINT: INTERSECTION OF C/L OF STONEY RIDGE RD. AND C/L OF BARRES RD.

18-03840



-319
20.09

29

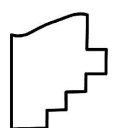
~~-322~~
~~15.70~~
15.71
AC.CORR.PER.SURV.
E.SUHAIL

AC.CORR.PER.SURV.
E.SUHAIL

~~1624.82~~ 1227.46

-085
16.11

-092
13.40



SPLITS/DEEDS PROCESSED
LORAIN COUNTY TAX MAP DEPARTMENT
226 MIDDLE AVE. ELYRIA, OH

SURVEYED BY:	EHTESHAM SUHAIL
CLOSURE:	1:333,582
MAP PAGE(S):	7-00-029
APPROVED BY:	RRM DATE: 7-30-18
SCALE:	1" = 275 PRIOR INSTRUMENT: 20140516731