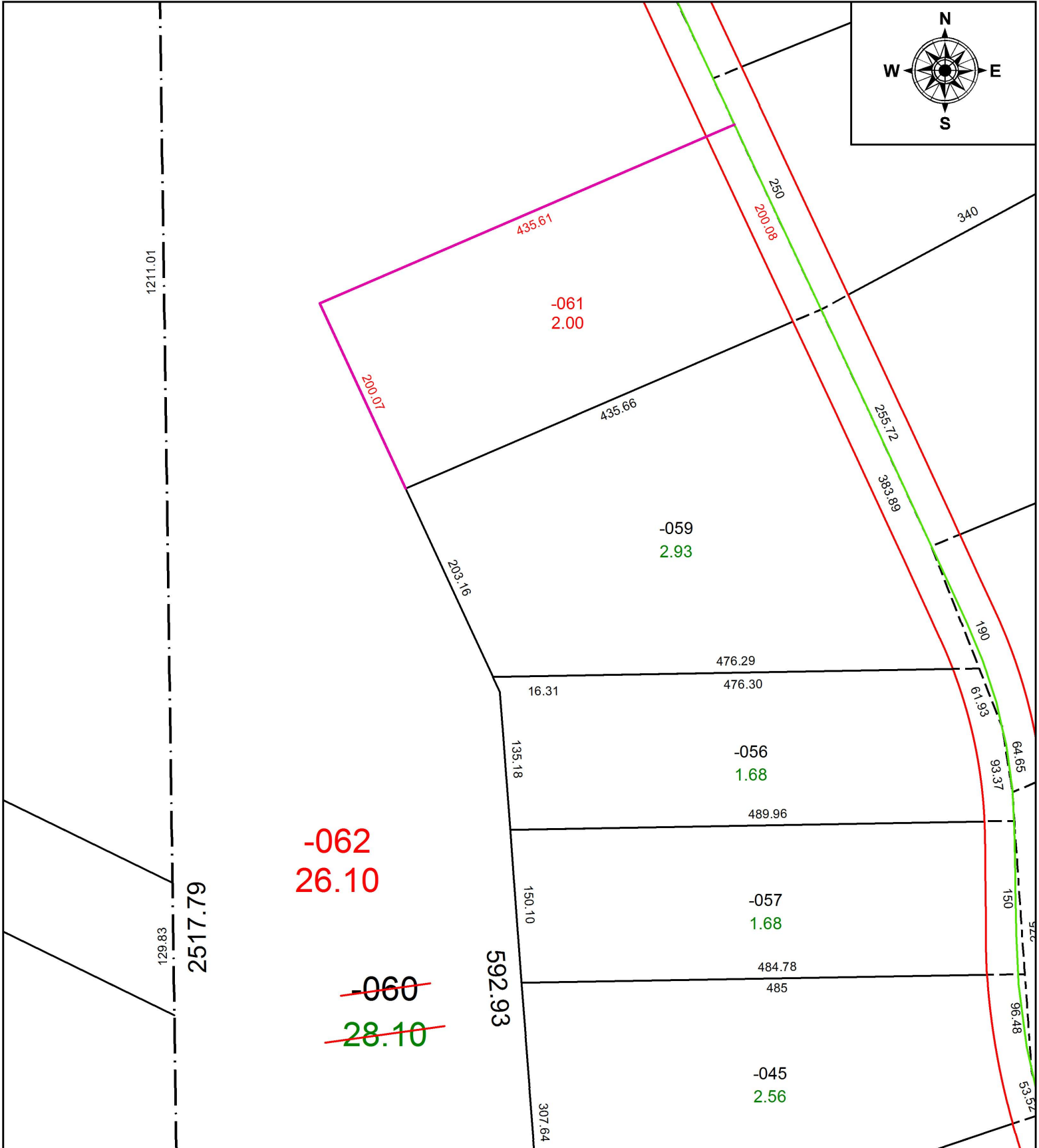
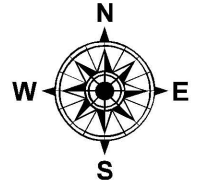


PARENT PARCEL: 01-00-062-000-060

CHILD PARCEL: 01-00-062-000-061, -062

STARTING POINT: INTERSECTION OF C/L OF BANK RD. AND SOUTH LINE OF O.L.62

18-03838



SPLITS/DEEDS PROCESSED
 LORAIN COUNTY TAX MAP DEPARTMENT
 226 MIDDLE AVE. ELYRIA, OH

SURVEYED BY: BRENT D. ANDERSON

CLOSURE: 1: 145,239

MAP PAGE(S): 1-00-062

APPROVED BY: RRM DATE: 7-25-18

SCALE: 1" = 125 PRIOR INSTRUMENT: 20060171394