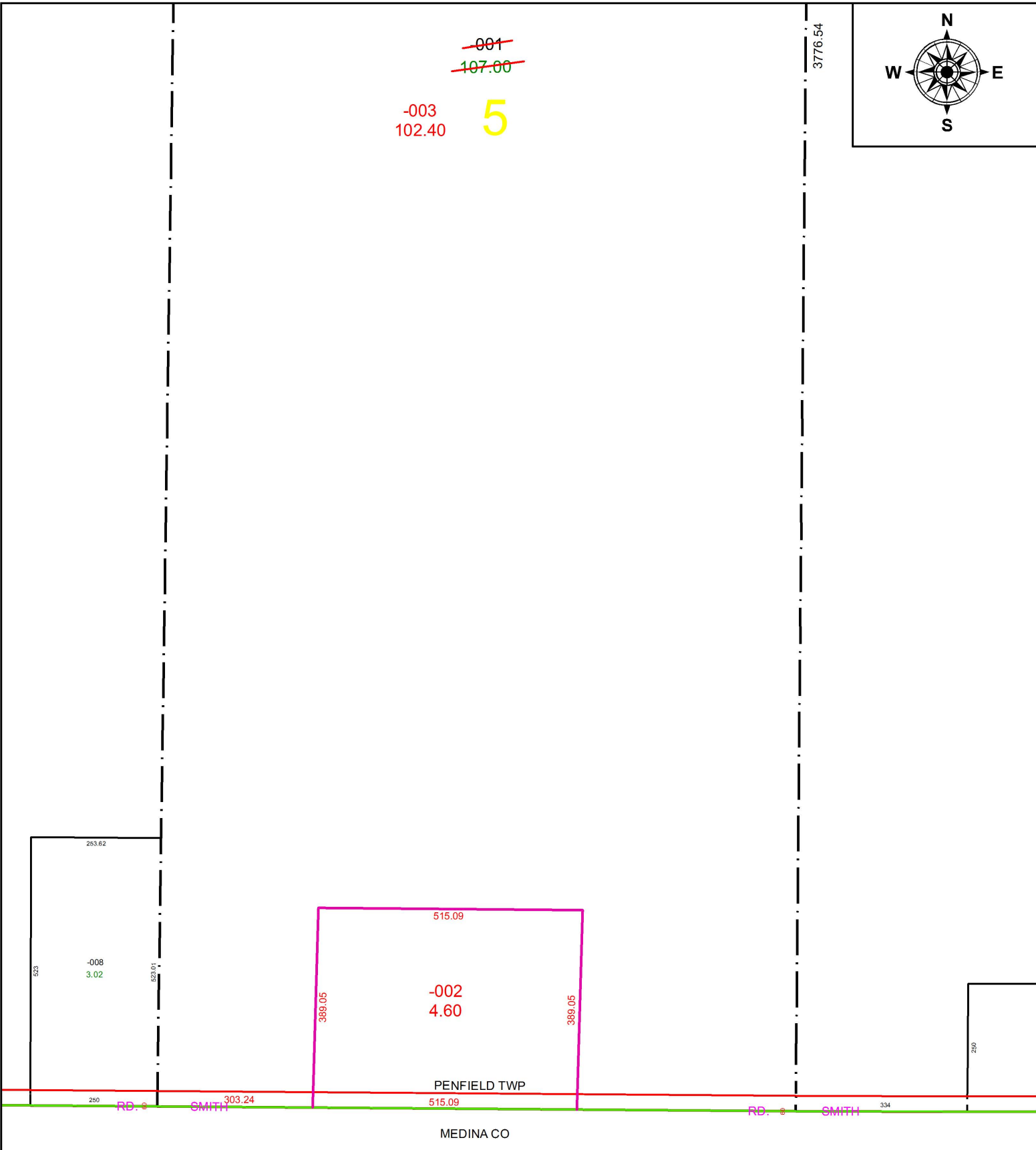
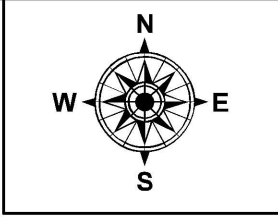


PARENT PARCEL: 19-01-005-000-001

CHILD PARCEL: 19-01-005-000-002, -003

STARTING POINT: SOUTHWEST CORNER OF O.L.5 TR.1

18-03836



SPLITS/DEEDS PROCESSED
 LORAIN COUNTY TAX MAP DEPARTMENT
 226 MIDDLE AVE. ELYRIA, OH

SURVEYED BY: TIMOHTY D. HOZALSKI
CLOSURE: 1: 2147483648
MAP PAGE(S): 19-E
APPROVED BY: RRM **DATE:** 7-18-18
SCALE: 1" = 250 **PRIOR INSTRUMENT:** 20180669216