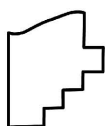
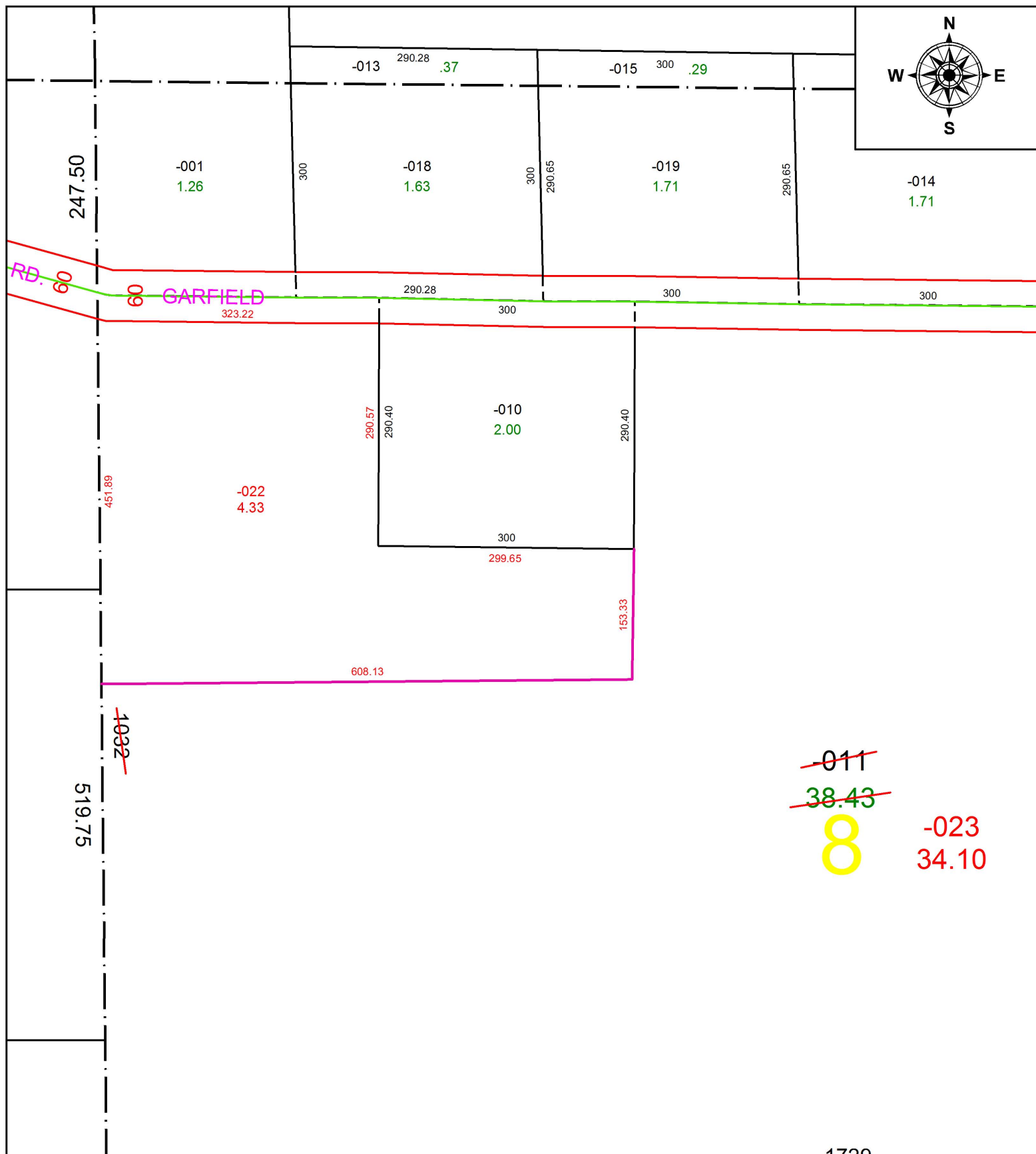


PARENT PARCEL: 08-14-008-000-011

CHILD PARCEL: 08-14-008-000-022, -023

STARTING POINT: INTERSECTION OF C/L OF GARFIELD RD. AND C/L OF BAIRD RD.

18-03835



**SPLITS/DEEDS PROCESSED**  
LORAIN COUNTY TAX MAP DEPARTMENT  
226 MIDDLE AVE. ELYRIA, OH

SURVEYED BY: THOMAS A. SIMON  
CLOSURE: 1: 157,541  
MAP PAGE(S): 8-A  
APPROVED BY: RRM DATE: 7-16-18  
SCALE: 1" = 150 PRIOR INSTRUMENT: 20160591124