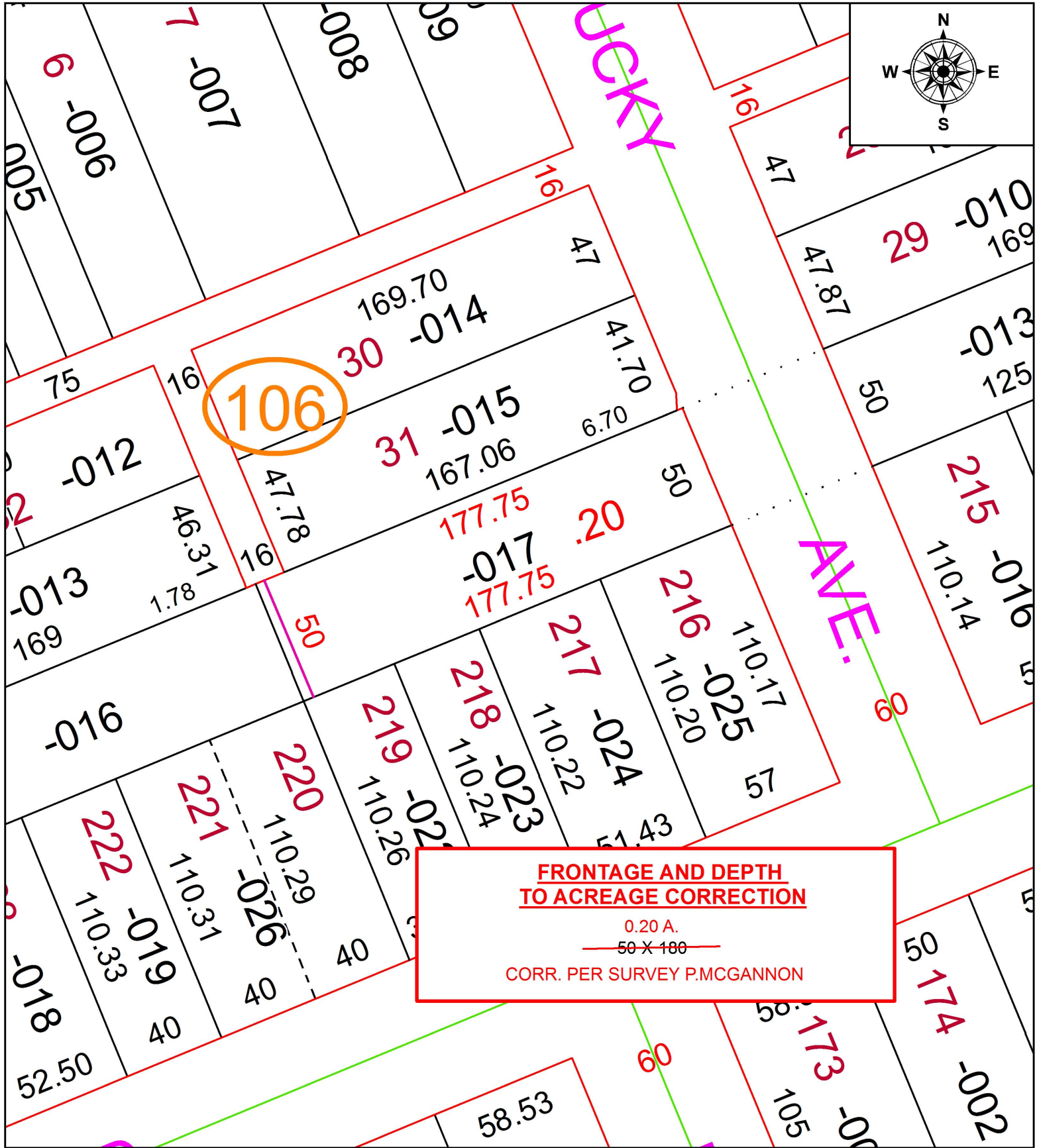


PARENT PARCEL: 02-00-051-106-017

CHILD PARCEL: XX-XX-XXX-XXX-XXX

STARTING POINT: INTERSECTION OF C/L OF KENTUCKY AVE. AND C/L OF D ST.

18-03833-A



**FRONTAGE AND DEPTH
TO ACREAGE CORRECTION**
 0.20 A.
 50 X 180
 CORR. PER SURVEY P.MCGANNON



SPLITS/DEEDS PROCESSED
 LORAIN COUNTY TAX MAP DEPARTMENT
 226 MIDDLE AVE. ELYRIA, OH

SURVEYED BY: SANTEE ASSOC.
 CLOSURE: 1: 2147483648
 MAP PAGE(S): 2-00-051
 APPROVED BY: RRM DATE: 2-12-18
 SCALE: 1" = 50 PRIOR INSTRUMENT: 20020878646