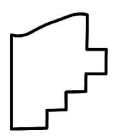
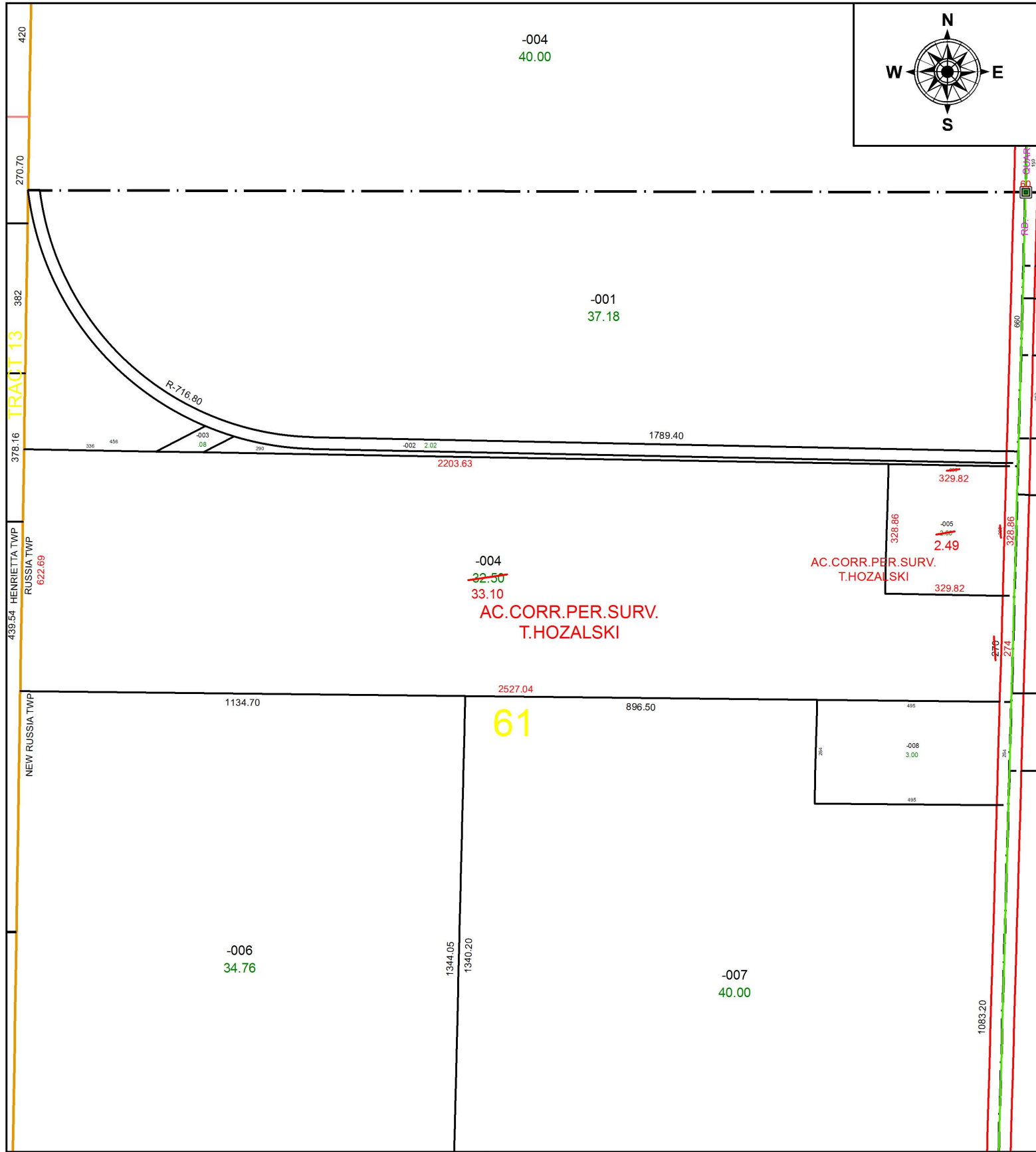
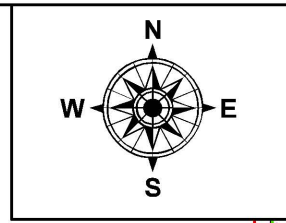


PARENT PARCEL: 09-00-061-000-004, -005

CHILD PARCEL: XX-XX-XXX-XXX-XXX

STARTING POINT: NORTHEAST CORNER OF O.L.61

18-03828-C



SPLITS/DEEDS PROCESSED
LORAIN COUNTY TAX MAP DEPARTMENT
226 MIDDLE AVE. ELYRIA, OH

SURVEYED BY: TIMOTHY D, HOZALSKI
CLOSURE: 1: 1,170,609
MAP PAGE(S): 9-00-061
APPROVED BY: RRM DATE: 2-1-18
SCALE: 1" = 325 PRIOR INSTRUMENT: 20170629368