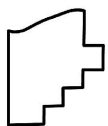
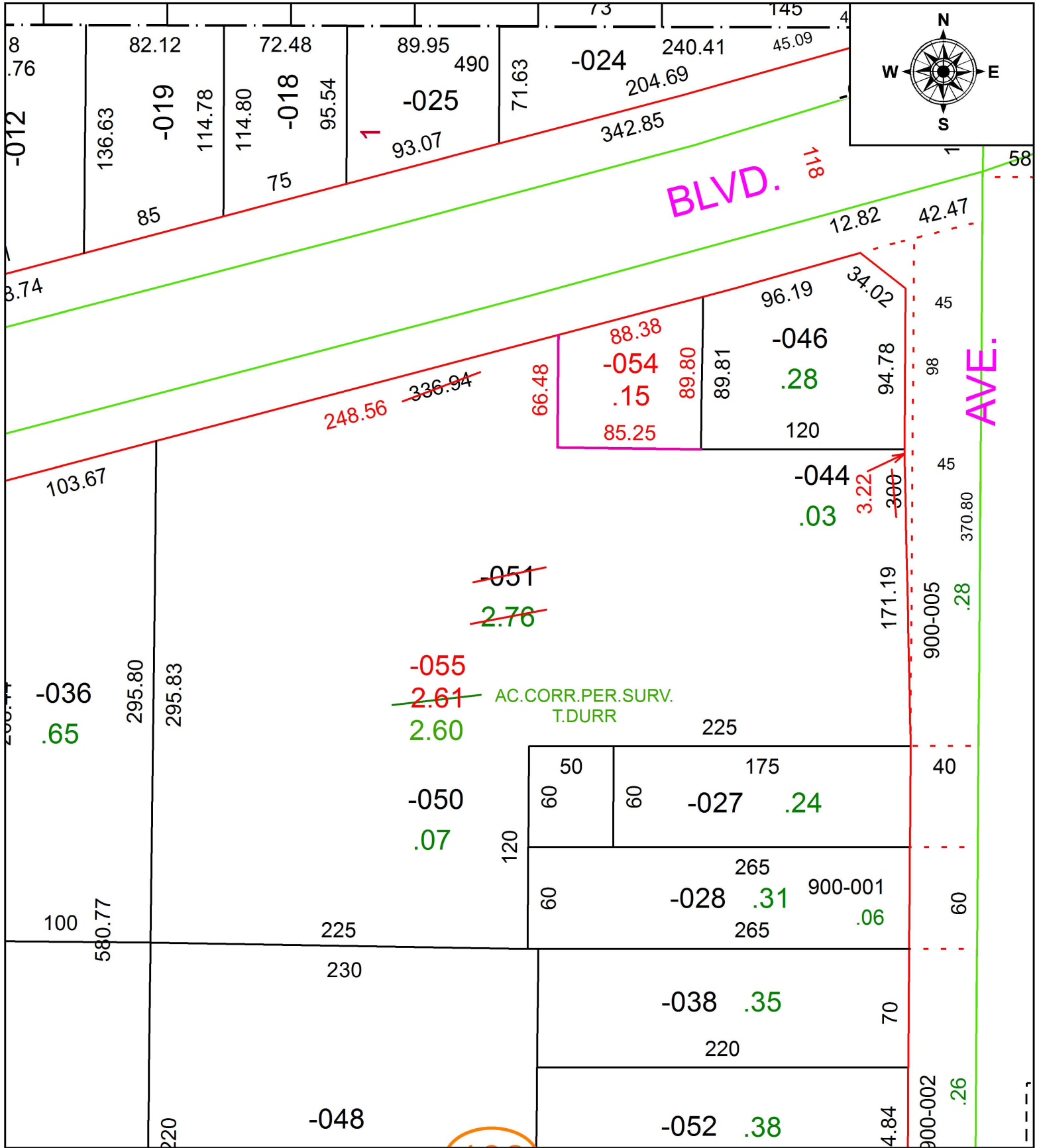


PARENT PARCEL: 02-02-006-108-051

CHILD PARCEL: 02-02-006-108-054, -055

STARTING POINT: INTERSECTION OF C/L OF TOWER BLVD. AND C/L OF OBERLIN AVE.

18-03824



SPLITS/DEEDS PROCESSED
 LORAIN COUNTY TAX MAP DEPARTMENT
 226 MIDDLE AVE. ELYRIA, OH

SURVEYED BY: TIMOTHY R. DURR
 CLOSURE: 1: 124,301
 MAP PAGE(S): 2-02-006
 APPROVED BY: RRM DATE: 6-11-18
 SCALE: 1" = 75' PRIOR INSTRUMENT: 20160581228