

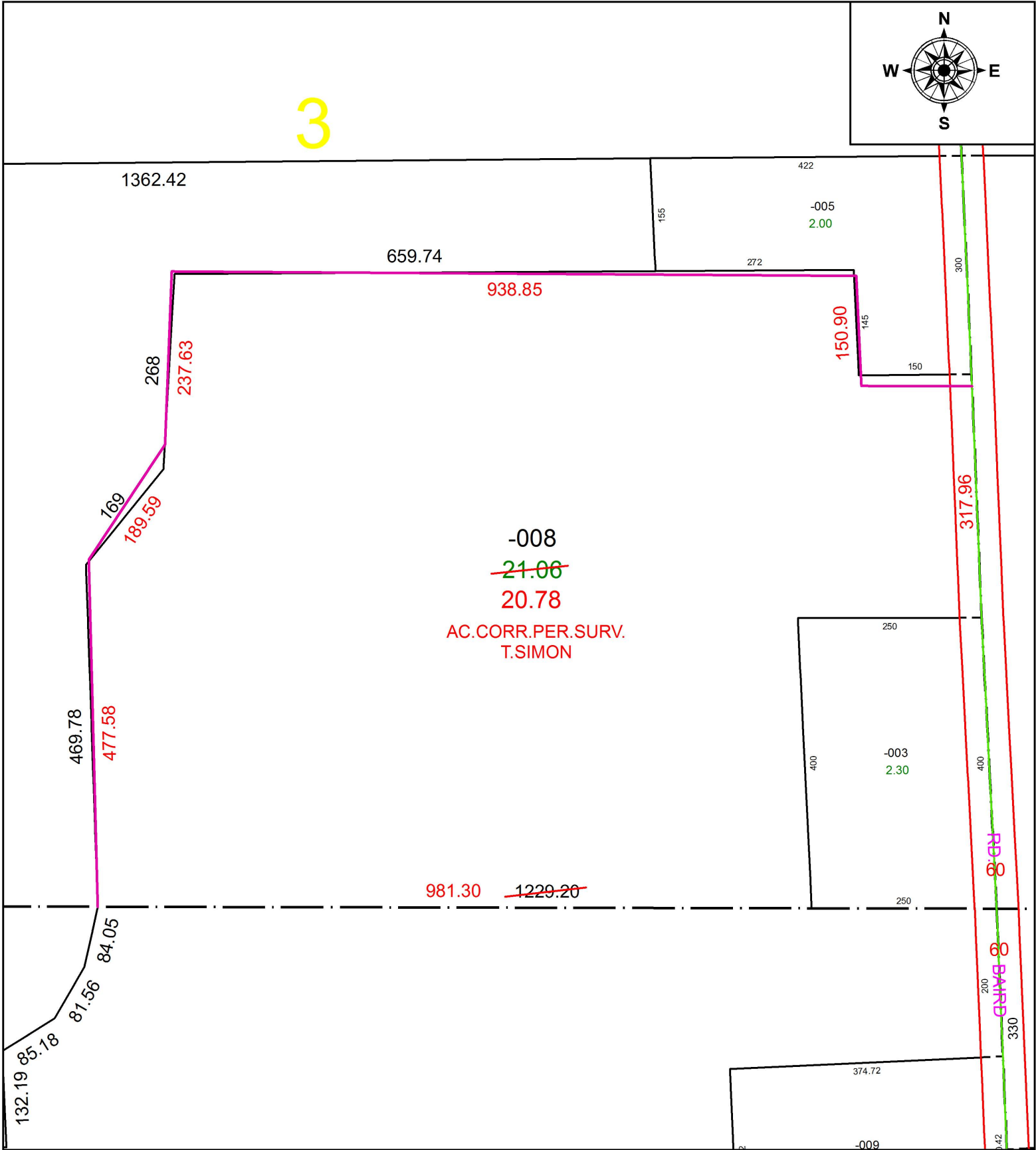
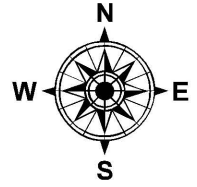
PARENT PARCEL: 08-13-003-000-008

CHILD PARCEL: XX-XX-XXX-XXX-XXX

STARTING POINT: SOUTHEAST CORNER OF O.L.3

18-03822-D

3



**SPLITS/DEEDS PROCESSED**  
LORAIN COUNTY TAX MAP DEPARTMENT  
226 MIDDLE AVE. ELYRIA, OH

SURVEYED BY: THOMAS A. SIMON

CLOSURE: 1: 549,968

MAP PAGE(S): 8-E

APPROVED BY: RRM DATE: 1-11-18

SCALE: 1" = 175 PRIOR INSTRUMENT: OR 496/279