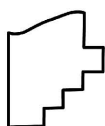
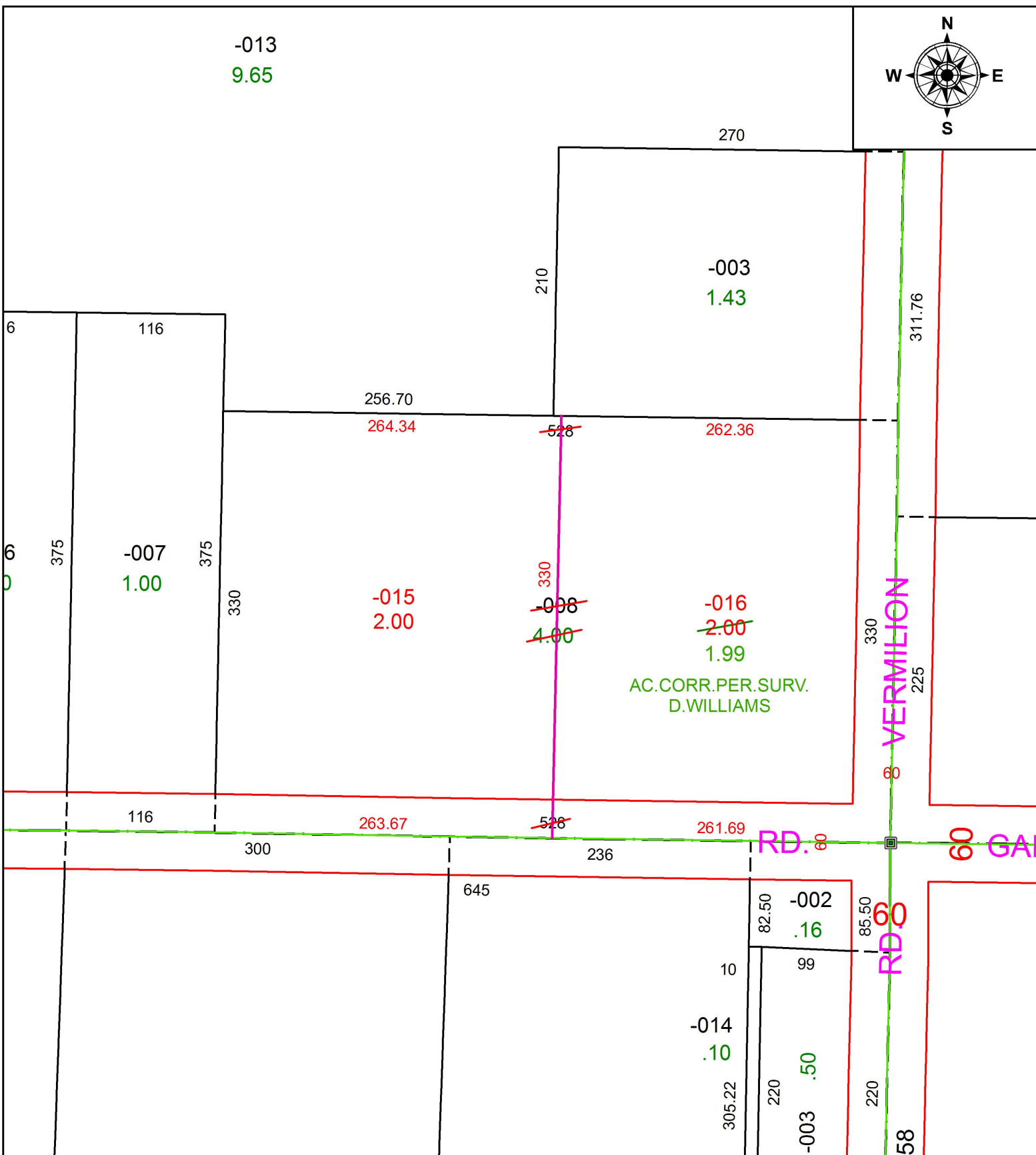


PARENT PARCEL: 08-15-011-000-008

CHILD PARCEL: 08-15-011-000-015, -016

STARTING POINT: INTERSECTION OF C/L OF VERMILION RD. AND C/L OF GARFIELD RD.

18-03820



SPLITS/DEEDS PROCESSED
 LORAIN COUNTY TAX MAP DEPARTMENT
 226 MIDDLE AVE. ELYRIA, OH

SURVEYED BY: DAVID A. WILLIAMS
 CLOSURE: 1: 362,311
 MAP PAGE(S): 8-C
 APPROVED BY: RRM DATE: 5-30-18
 SCALE: 1" = 100 PRIOR INSTRUMENT: 20150556394