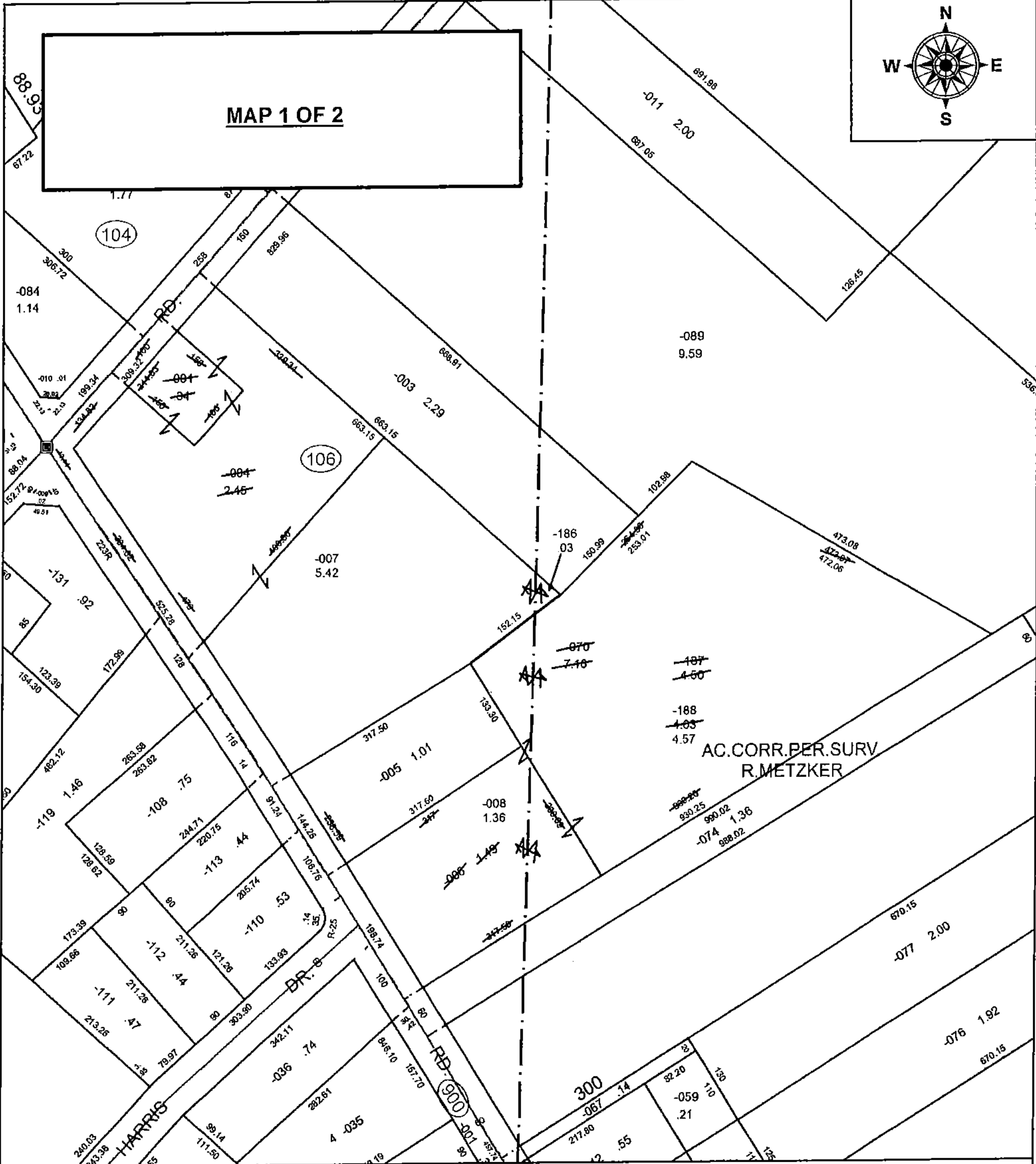
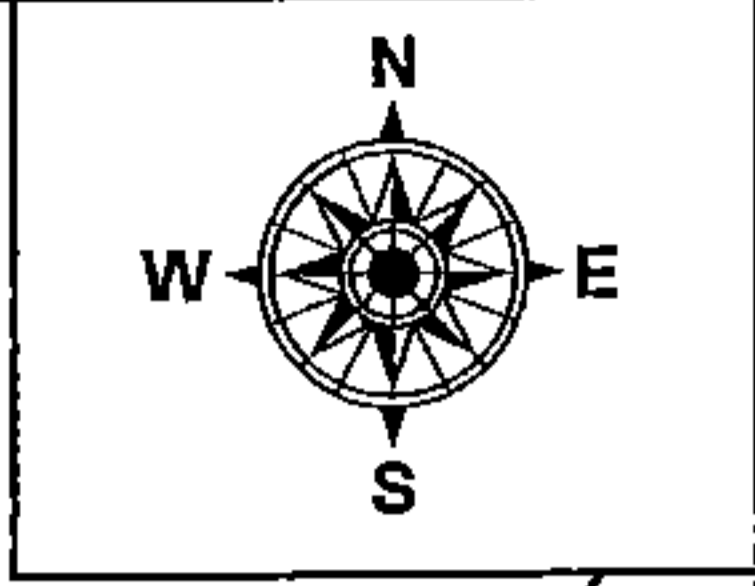


PARENT PARCEL: 07-00-011-103-006, -070, 07-00-014-106-001, -004, -005
 CHILD PARCEL: 07-00-011-103-186 THRU -188, 07-00-014-106-005, -007, -008
 STARTING POINT: INTERSECTION OF SOUTH LINE OF O.L.11 AND C/L OF ROOT RD.

18-03819



SPLITS/DEEDS PROCESSED
 LORAIN COUNTY TAX MAP DEPARTMENT
 226 MIDDLE AVE. ELYRIA, OH

SURVEYED BY: RICHARD METZKER
 CLOSURE: 1: 162,661
 MAP PAGE(S): 7-00-014
 APPROVED BY: RRM DATE: 5-29-18
 SCALE: 1" = 175 PRIOR INSTRUMENT: 20060182662

