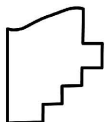
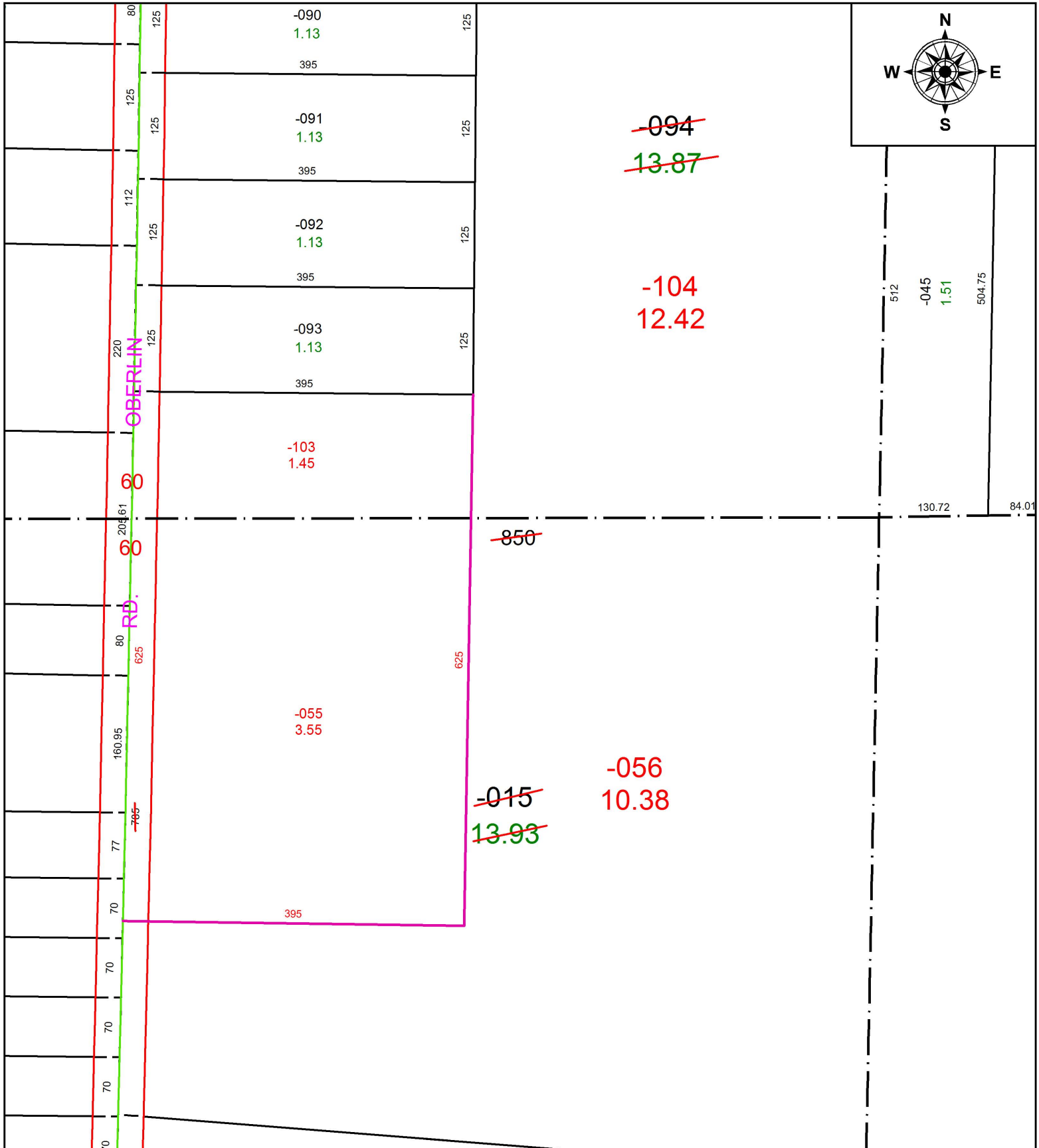


PARENT PARCEL: 05-00-052-000-015, 05-00-053-000-094

CHILD PARCEL: 05-00-052-000-055, -056, 05-00-053-000-103, -104

STARTING POINT: INTERSECTION OF C/L OF OBERLIN RD. AND SOUTH LINE OF S.R.113

18-03818



SPLITS/DEEDS PROCESSED
 LORAIN COUNTY TAX MAP DEPARTMENT
 226 MIDDLE AVE. ELYRIA, OH

SURVEYED BY: THOMAS A. SIMON

CLOSURE: 1: 2147483648

MAP PAGE(S): 5-00-053

APPROVED BY: RRM DATE: 5-24-18

SCALE: 1" = 150 PRIOR INSTRUMENT: 20000707326