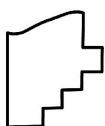
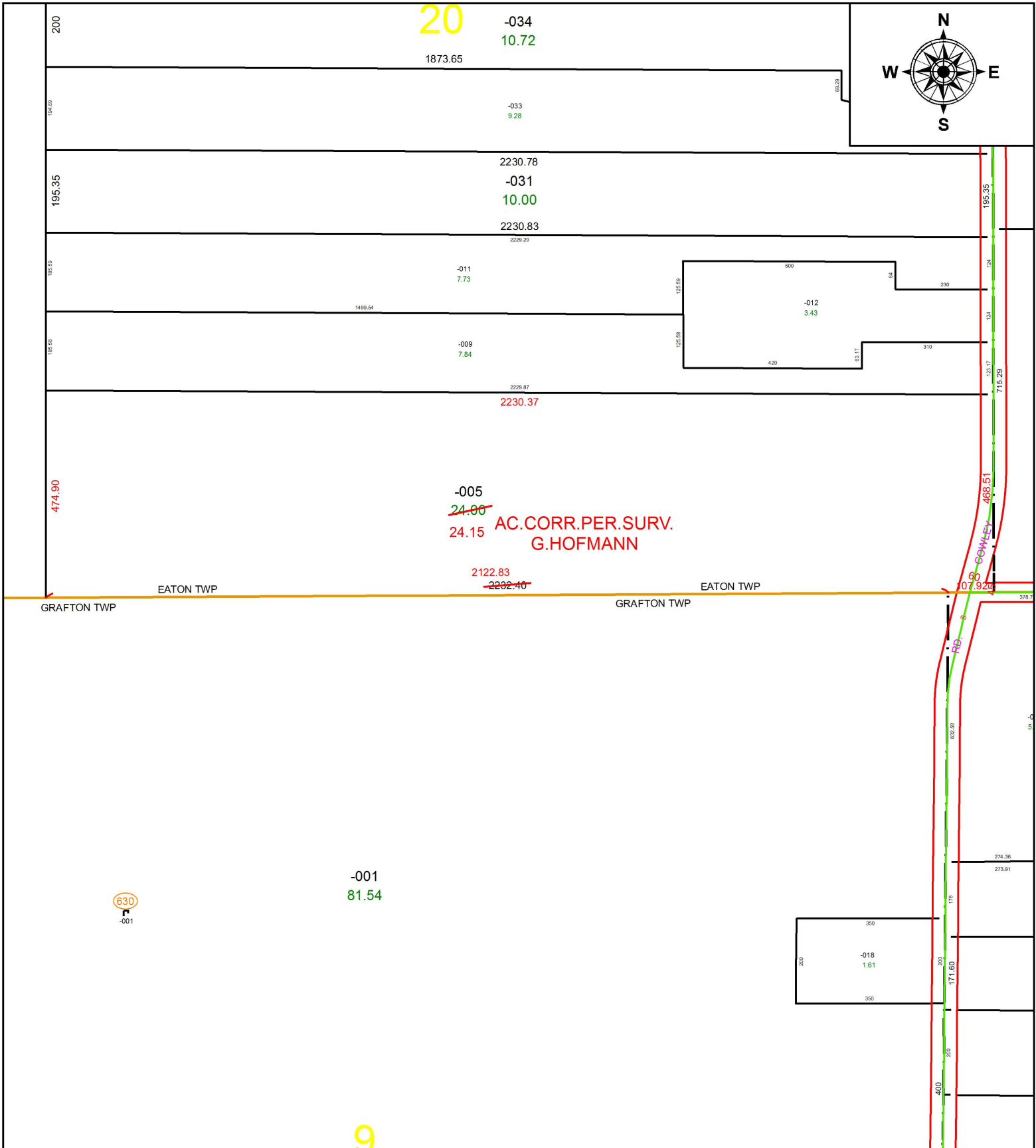


PARENT PARCEL: 11-00-020-000-005

CHILD PARCEL: XX-XX-XXX-XXX-XXX

STARTING POINT: SOUTHEAST CORNER OF O.L.20

17-03817-D



**SPLITS/DEEDS PROCESSED**  
 LORAIN COUNTY TAX MAP DEPARTMENT  
 226 MIDDLE AVE. ELYRIA, OH

**SURVEYED BY:** GEORGE A. HOFMANN

**CLOSURE:** 1: 571,968

**MAP PAGE(S):** 11-00-020

**APPROVED BY:** RRM **DATE:** 1-9-18

**SCALE:** 1" = 300 **PRIOR INSTRUMENT:** 20120402703