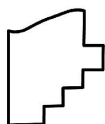
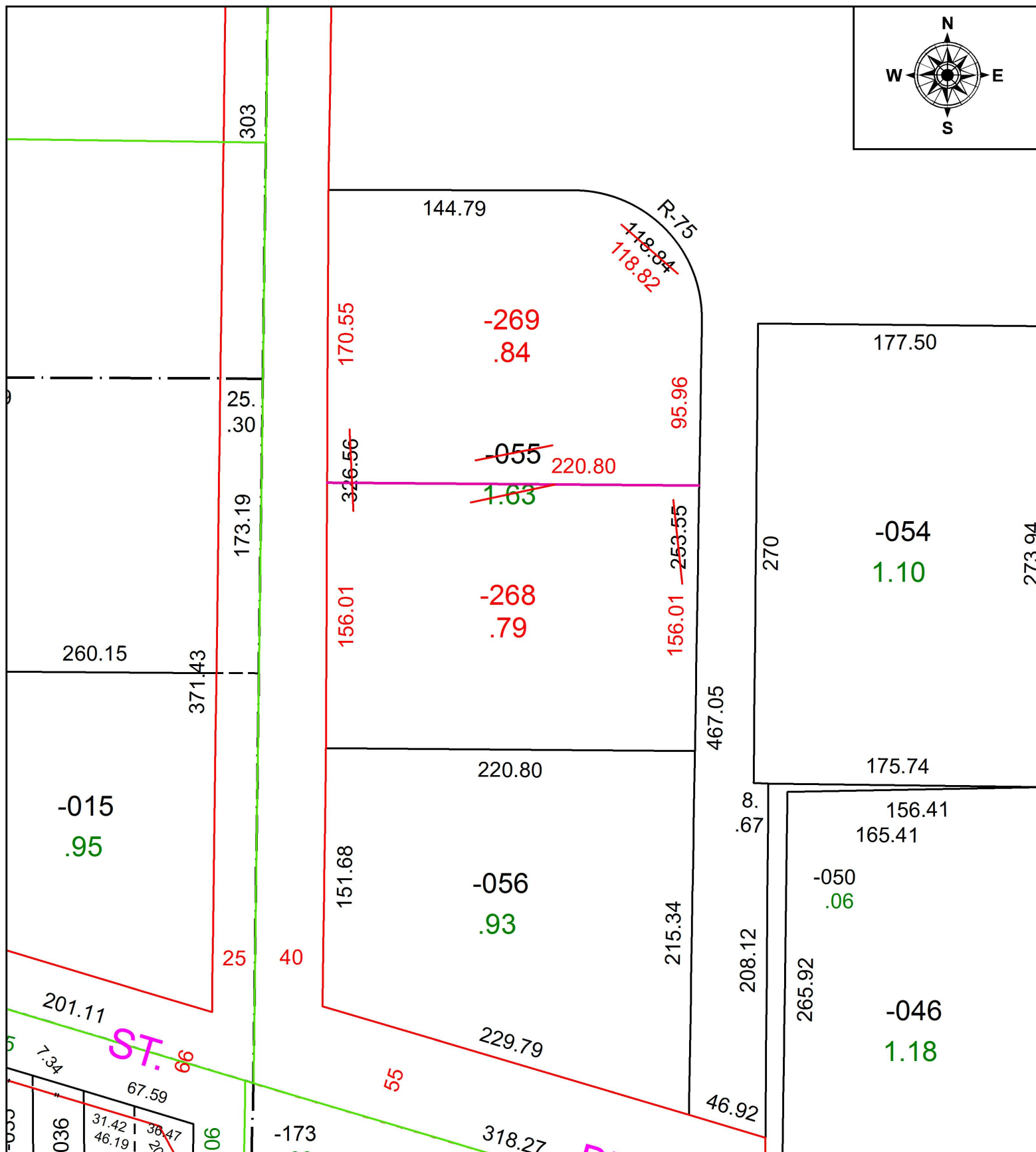
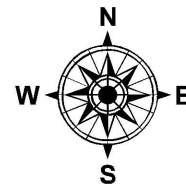


PARENT PARCEL: 06-25-007-000-055

CHILD PARCEL: 06-25-007-000-268, -269

STARTING POINT: INTERSECTION OF C/L OF ABBE RD. S. AND C/L OF EAST BROAD ST.

18-03814



SPLITS/DEEDS PROCESSED
LORAIN COUNTY TAX MAP DEPARTMENT
226 MIDDLE AVE. ELYRIA, OH

SURVEYED BY: THOMAS A. SIMON
CLOSURE: 1: 301,650
MAP PAGE(S): 6-125
APPROVED BY: RRM DATE: 5-21-18
SCALE: 1" = 75' PRIOR INSTRUMENT: DV 1045/232