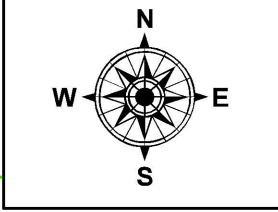
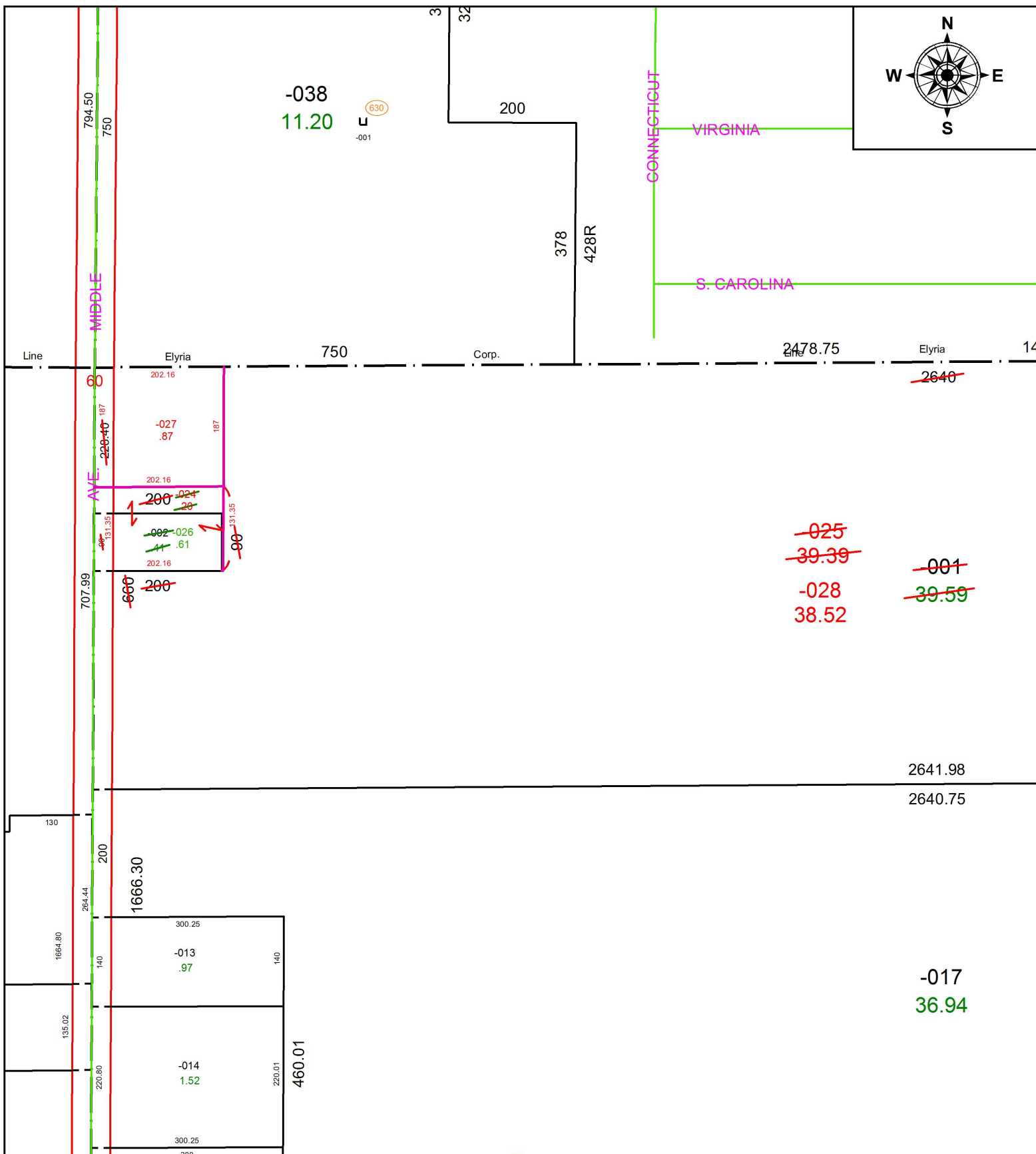


PARENT PARCEL: 10-00-007-101-001, -002

CHILD PARCEL: 10-00-007-101-024 THRU -028

STARTING POINT: NORTHWEST CORNER OF SEC. 7

18-03812



SPLITS/DEEDS PROCESSED
 LORAIN COUNTY TAX MAP DEPARTMENT
 226 MIDDLE AVE. ELYRIA, OH

SURVEYED BY: THOMAS A. SIMON
 CLOSURE: 1: 2147483648
 MAP PAGE(S): 10-00-007
 APPROVED BY: RRM DATE: 5-10-18
 SCALE: 1" = 200 PRIOR INSTRUMENT: 20110371224