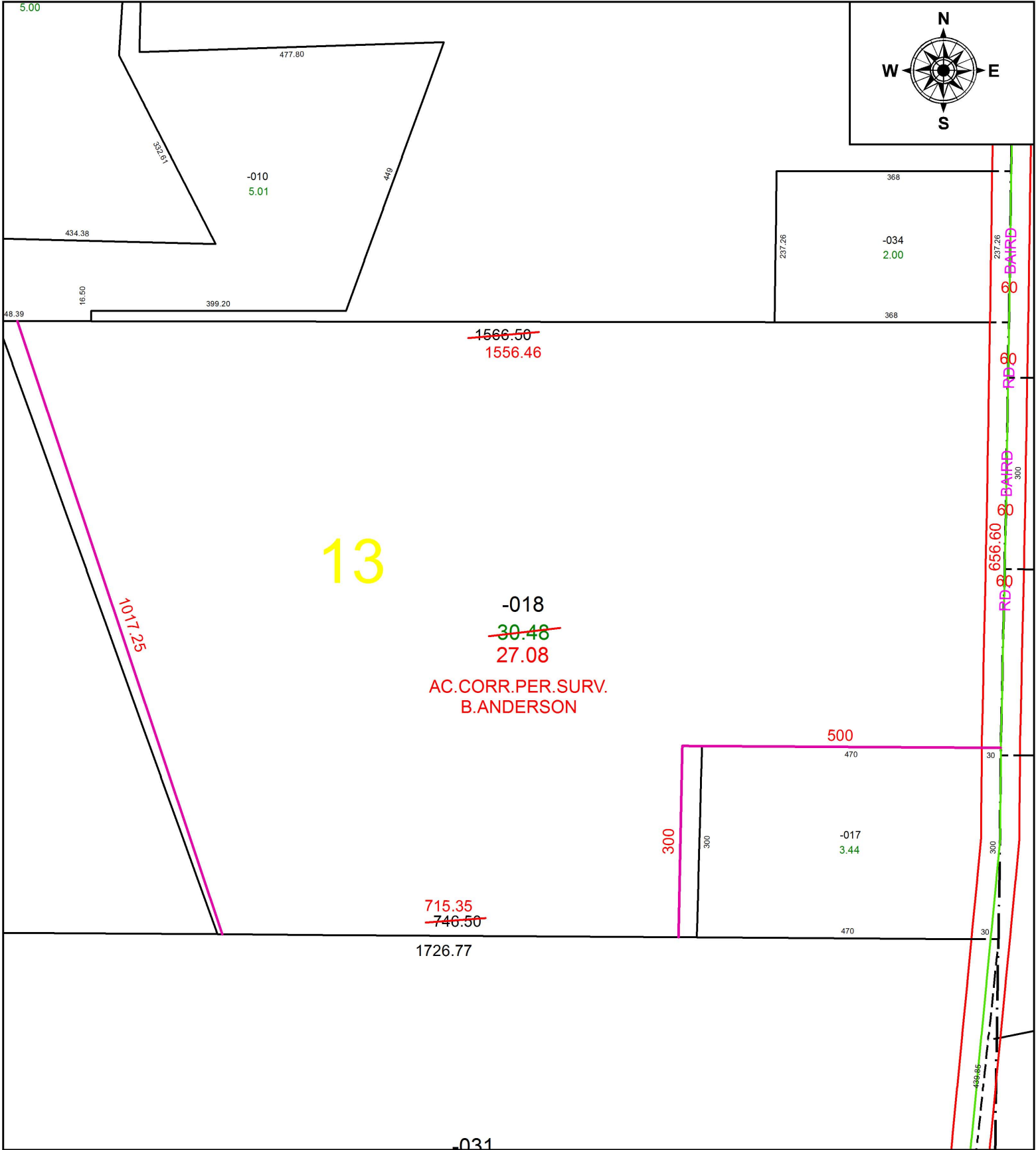


PARENT PARCEL: 08-12-013-000-018

CHILD PARCEL: XX-XX-XXX-XXX-XXX

STARTING POINT: INTERSECTION OF C/L OF BAIRD RD. AND C/L OF BECKER RD.

17-03811-A



13

-018  
~~30.48~~  
27.08  
AC.CORR.PER.SURV.  
B.ANDERSON

1017.25

~~1566.50~~  
1556.46

715.35  
~~746.50~~

500

300

1726.77

-031

237.26

300

656.60

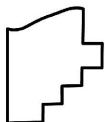
30

300

300

30

448.86



**SPLITS/DEEDS PROCESSED**  
LORAIN COUNTY TAX MAP DEPARTMENT  
226 MIDDLE AVE. ELYRIA, OH

SURVEYED BY: BRENT D. ANDERSON

CLOSURE: 1: 1,754,547

MAP PAGE(S): 8-E

APPROVED BY: RRM DATE: 12-15-17

SCALE: 1" = 200 PRIOR INSTRUMENT: 19970502749