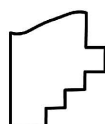
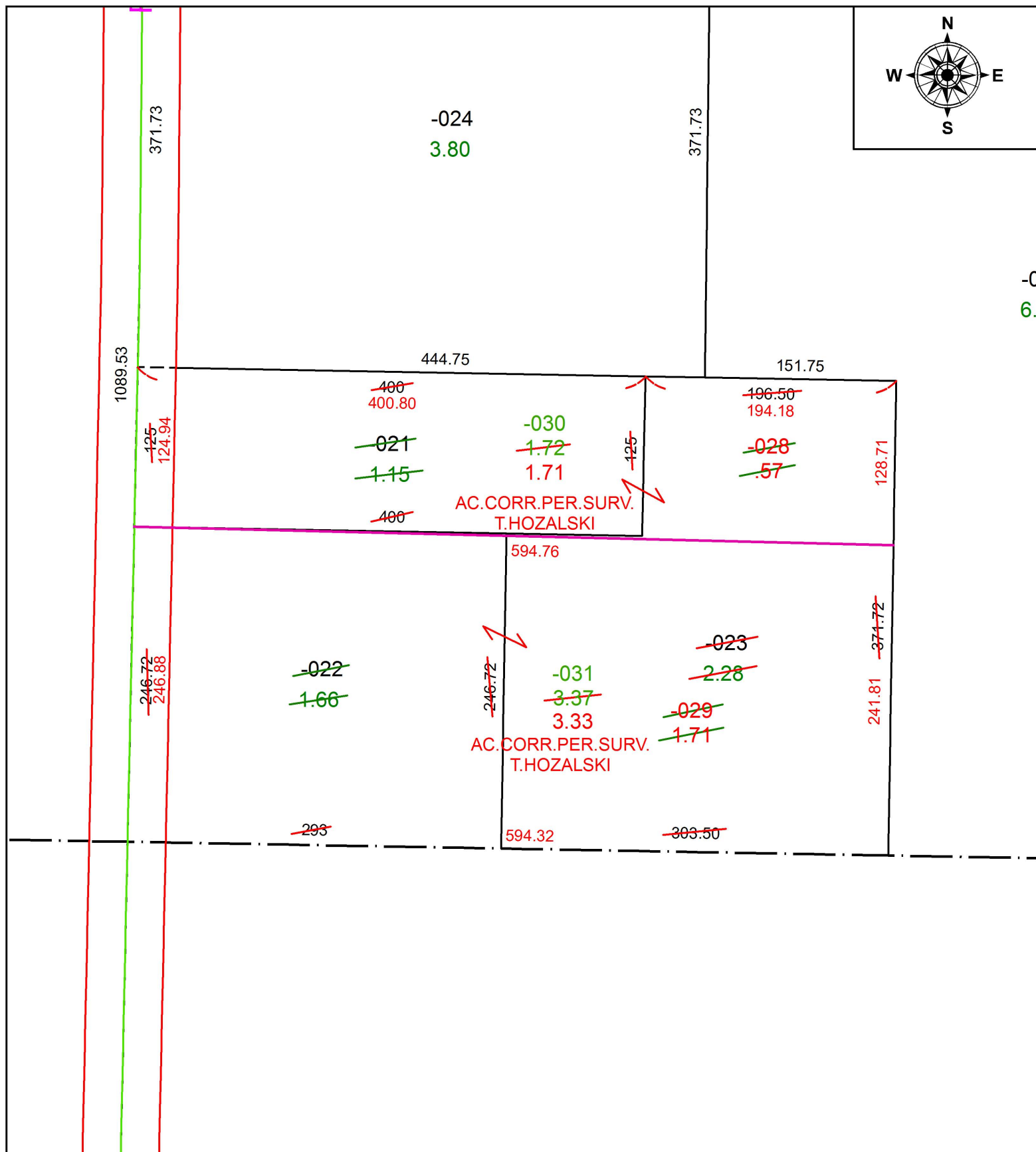
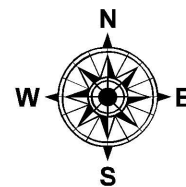


PARENT PARCEL: 21-08-001-000-021 THRU -023

CHILD PARCEL: 21-08-001-000-028 THRU -031

STARTING POINT: INTERSECTION OF C/L OF S.R. 58 AND C/L OF NEW LONDON EASTERN RD.

18-03810



SPLITS/DEEDS PROCESSED
 LORAIN COUNTY TAX MAP DEPARTMENT
 226 MIDDLE AVE. ELYRIA, OH

SURVEYED BY: TIMOHTY D. HOZALSKI

CLOSURE: 1: 127,306

MAP PAGE(S): 21-G

APPROVED BY: RRM DATE: 5-4-18

SCALE: 1" = 100 PRIOR INSTRUMENT: 20120438421