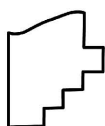
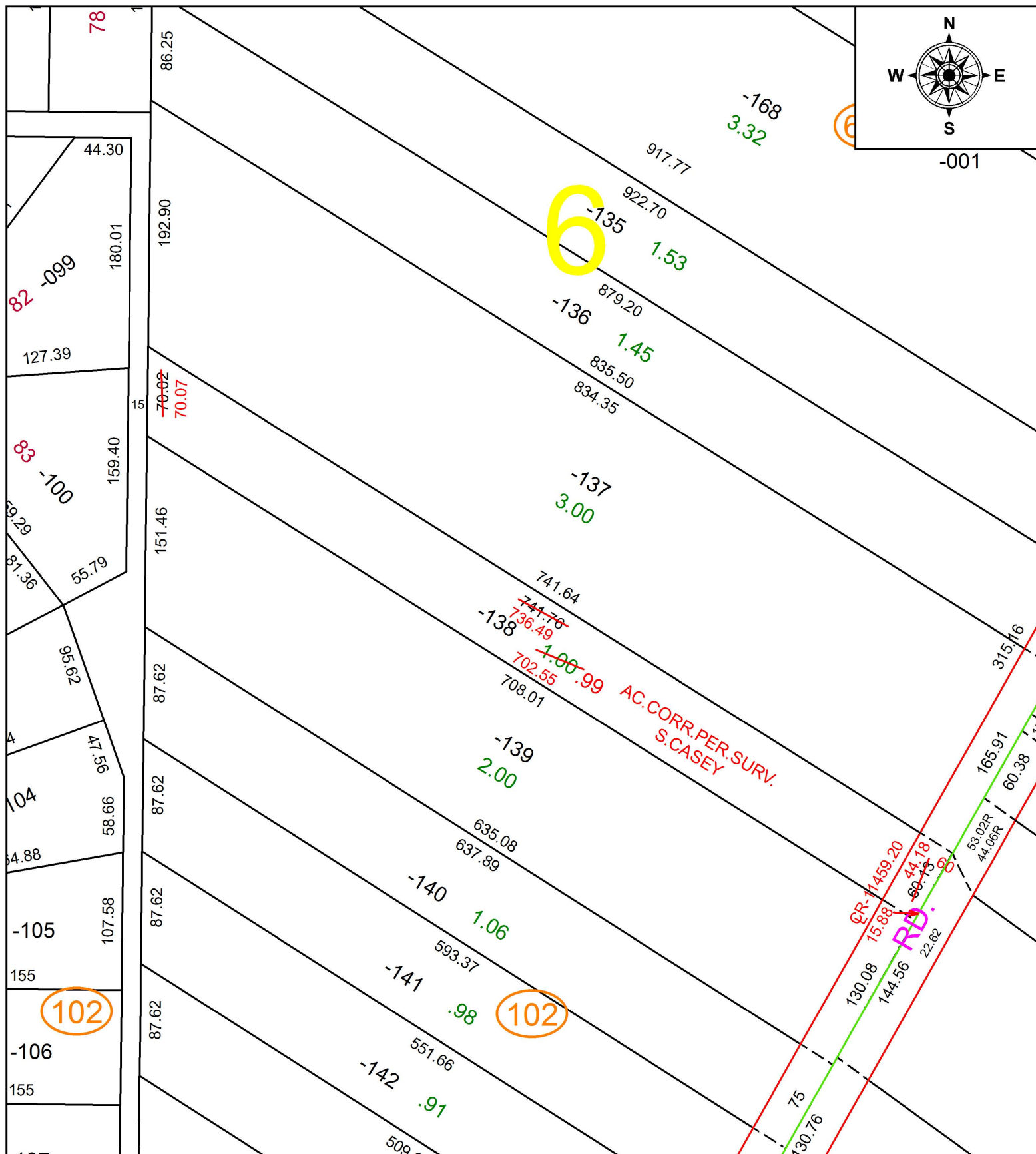


PARENT PARCEL: 07-00-006-102-138

CHILD PARCEL: XX-XX-XXX-XXX-XXX

STARTING POINT: INTERSECTION OF C/L OF N. BARTON RD. AND C/L OF OAKHURST DR.

17-03810-D



**SPLITS/DEEDS PROCESSED**  
 LORAIN COUNTY TAX MAP DEPARTMENT  
 226 MIDDLE AVE. ELYRIA, OH

SURVEYED BY: SCOTT J. CASEY  
 CLOSURE: 1: 406,867  
 MAP PAGE(S): 7-00-006  
 APPROVED BY: RRM DATE: 12-12-17  
 SCALE: 1" = 100 PRIOR INSTRUMENT: 20170617925