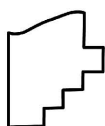
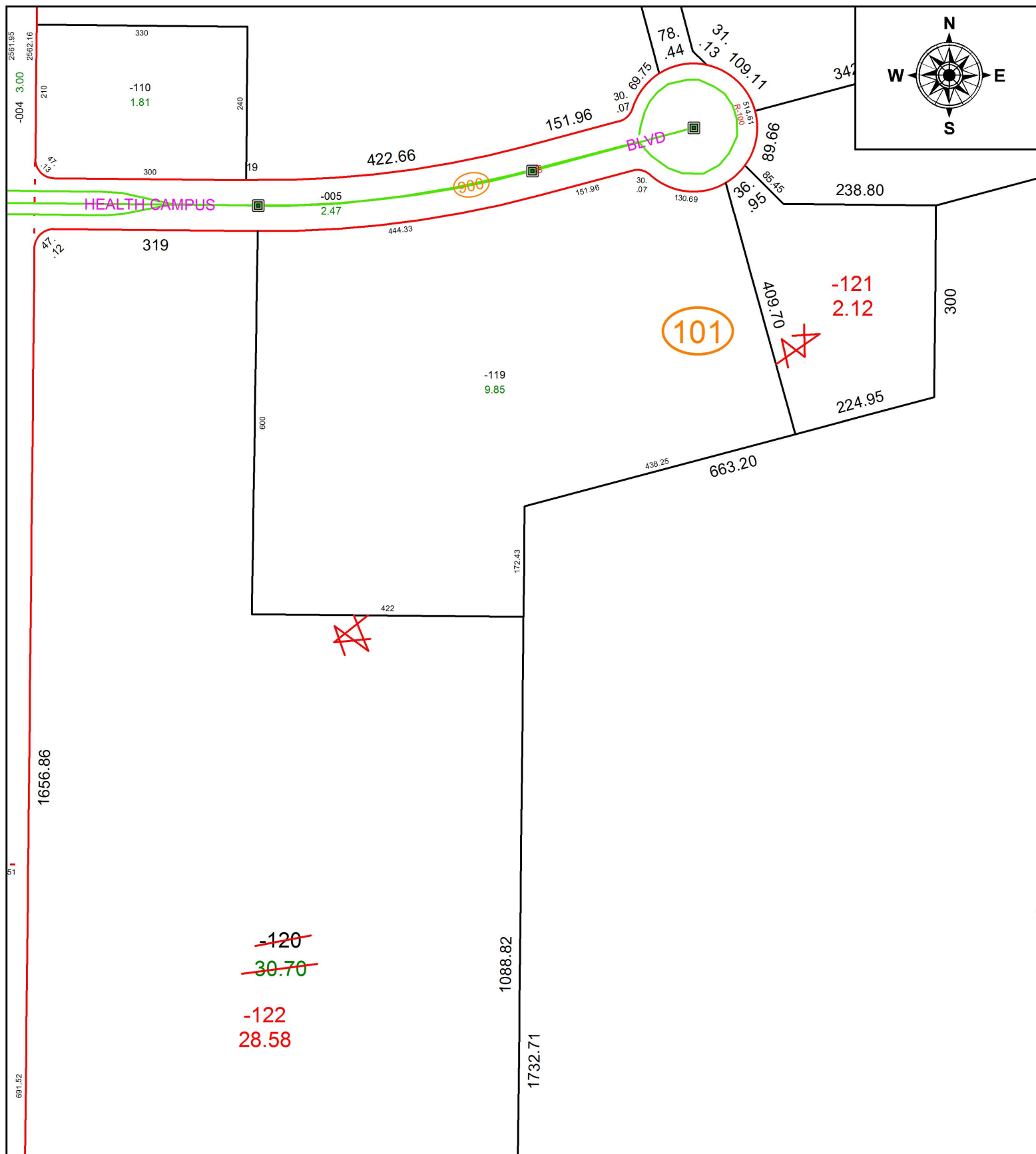


PARENT PARCEL: 04-00-028-101-120

CHILD PARCEL: 04-00-028-101-121, -122

STARTING POINT: INTERSECTION OF C/L OF NAGEL RD. AND SOUTH LINE OF SEC.28

18-03809



SPLITS/DEEDS PROCESSED
 LORAIN COUNTY TAX MAP DEPARTMENT
 226 MIDDLE AVE. ELYRIA, OH

SURVEYED BY: AMY M. KELLY
 CLOSURE: 1: 29,286
 MAP PAGE(S): 4-00-028
 APPROVED BY: RRM DATE: 5-3-18
 SCALE: 1" = 200 PRIOR INSTRUMENT: 20130482288