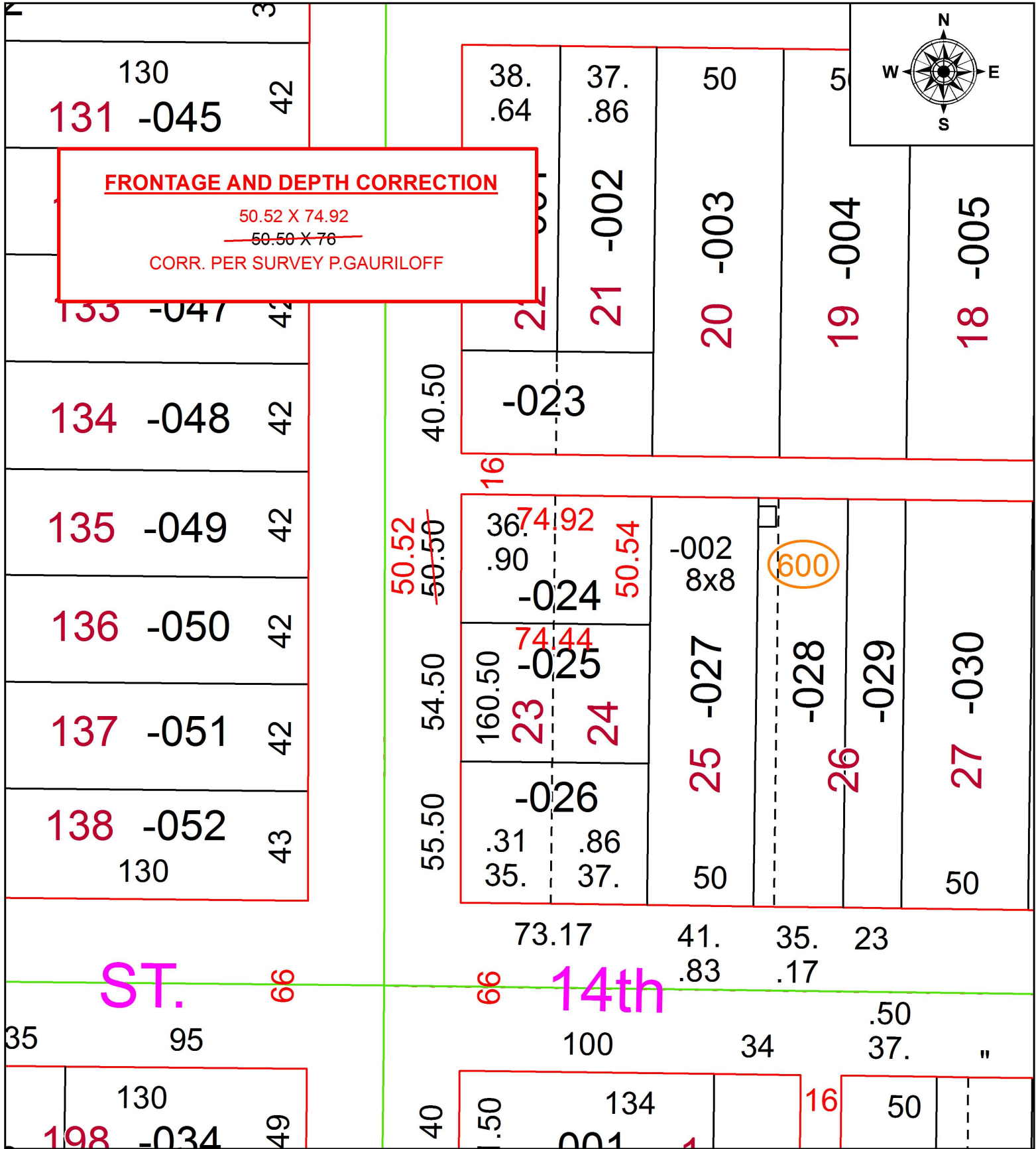


PARENT PARCEL: 02-01-006-127-024

CHILD PARCEL: XX-XX-XXX-XXX-XXX

STARTING POINT: INTERSECTION OF C/L OF WASHINGTON AVE AND NORTH LINE OF W. 14TH ST.

17-03803-D

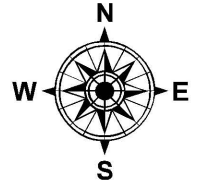


FRONTAGE AND DEPTH CORRECTION

50.52 X 74.92

~~50.50 X 76~~

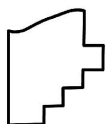
CORR. PER SURVEY P.GAURILOFF



ST. 66

14th

600



SPLITS/DEEDS PROCESSED
LORAIN COUNTY TAX MAP DEPARTMENT
226 MIDDLE AVE. ELYRIA, OH

SURVEYED BY: PETER JOHN GAURILOFF

CLOSURE: 1: 74,721

MAP PAGE(S): 2-01-006

APPROVED BY: RRM DATE: 11-27-17

SCALE: 1" = 50 PRIOR INSTRUMENT: 20170636576