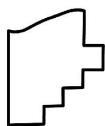
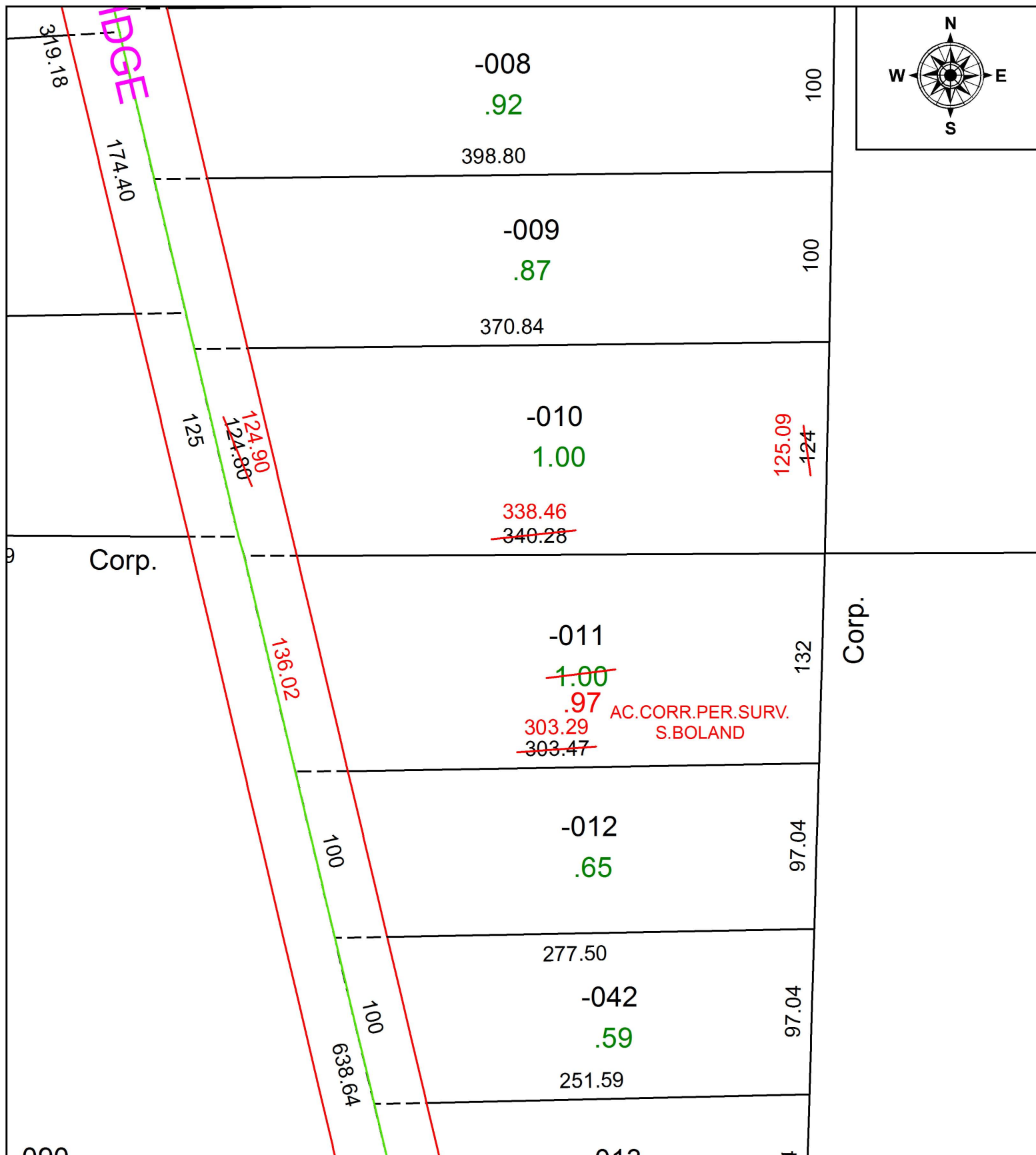


PARENT PARCEL: 06-24-016-000-010, -011

CHILD PARCEL: XX-XX-XXX-XXX-XXX

STARTING POINT: INTERSECTION OF C/L OF WEST RIDGE RD. AND C/L OF FOWL RD.

17-03802-C



SPLITS/DEEDS PROCESSED
LORAIN COUNTY TAX MAP DEPARTMENT
226 MIDDLE AVE. ELYRIA, OH

SURVEYED BY: SEAN A. BOLAND
 CLOSURE: 1: 269,591
 MAP PAGE(S): 6-109
 APPROVED BY: RRM DATE: 11-16-17
 SCALE: 1" = 75' PRIOR INSTRUMENT: 20110378836