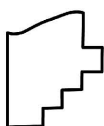
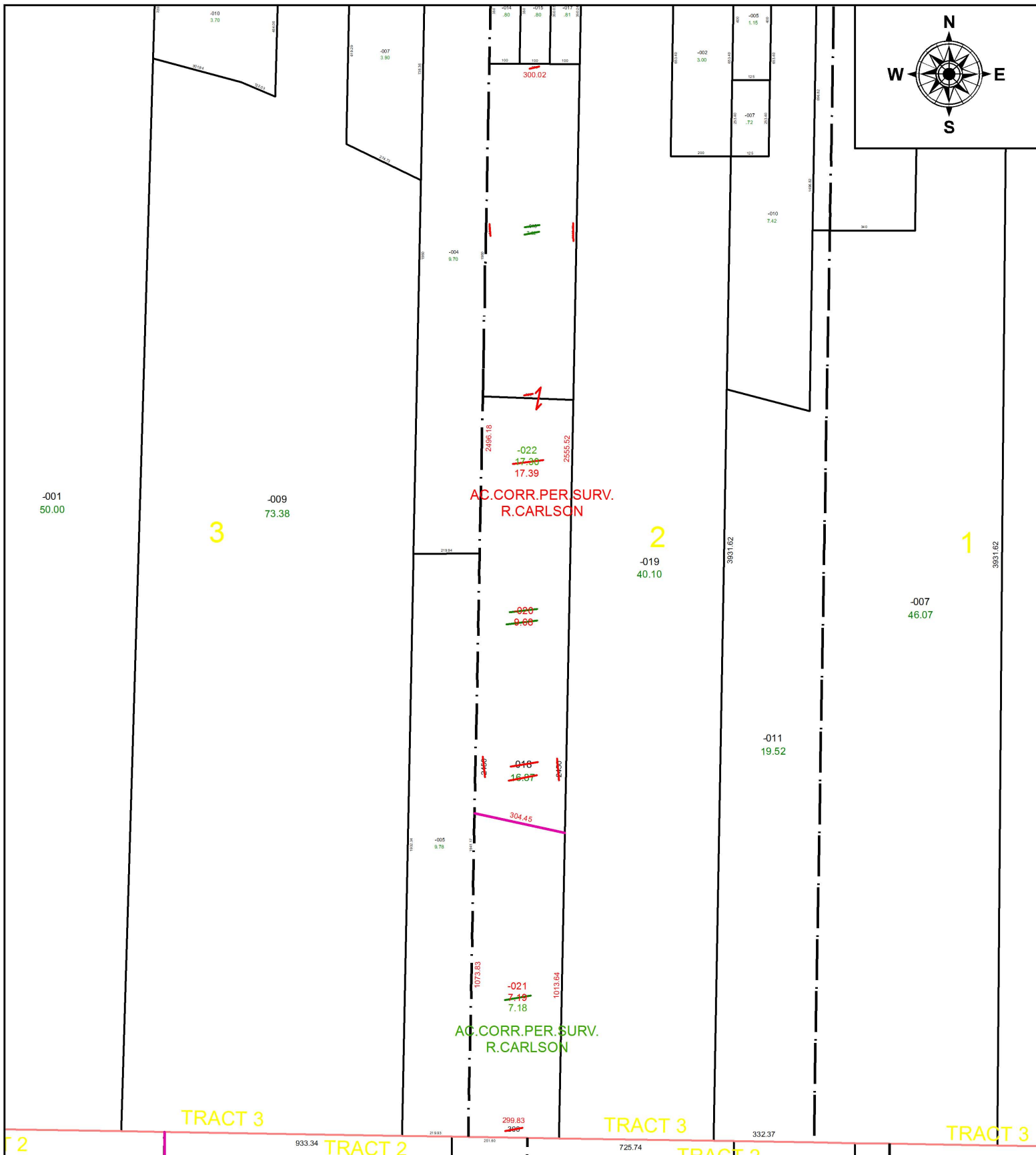
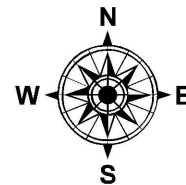


PARENT PARCEL: 19-03-002-000-016, -018

CHILD PARCEL: 19-03-002-000-020 THRU -022

STARTING POINT: ON C/L OF S.R. 18 AT STATION 521+88.49 OF LOR-3.66-4.52

18-03799



SPLITS/DEEDS PROCESSED
LORAIN COUNTY TAX MAP DEPARTMENT
226 MIDDLE AVE. ELYRIA, OH

SURVEYED BY: RICHARD D. CARLSON

CLOSURE: 1: 515,914

MAP PAGE(S): 19-E

APPROVED BY: RRM DATE: 3-29-18

SCALE: 1" = 425 PRIOR INSTRUMENT: OR 1131/841