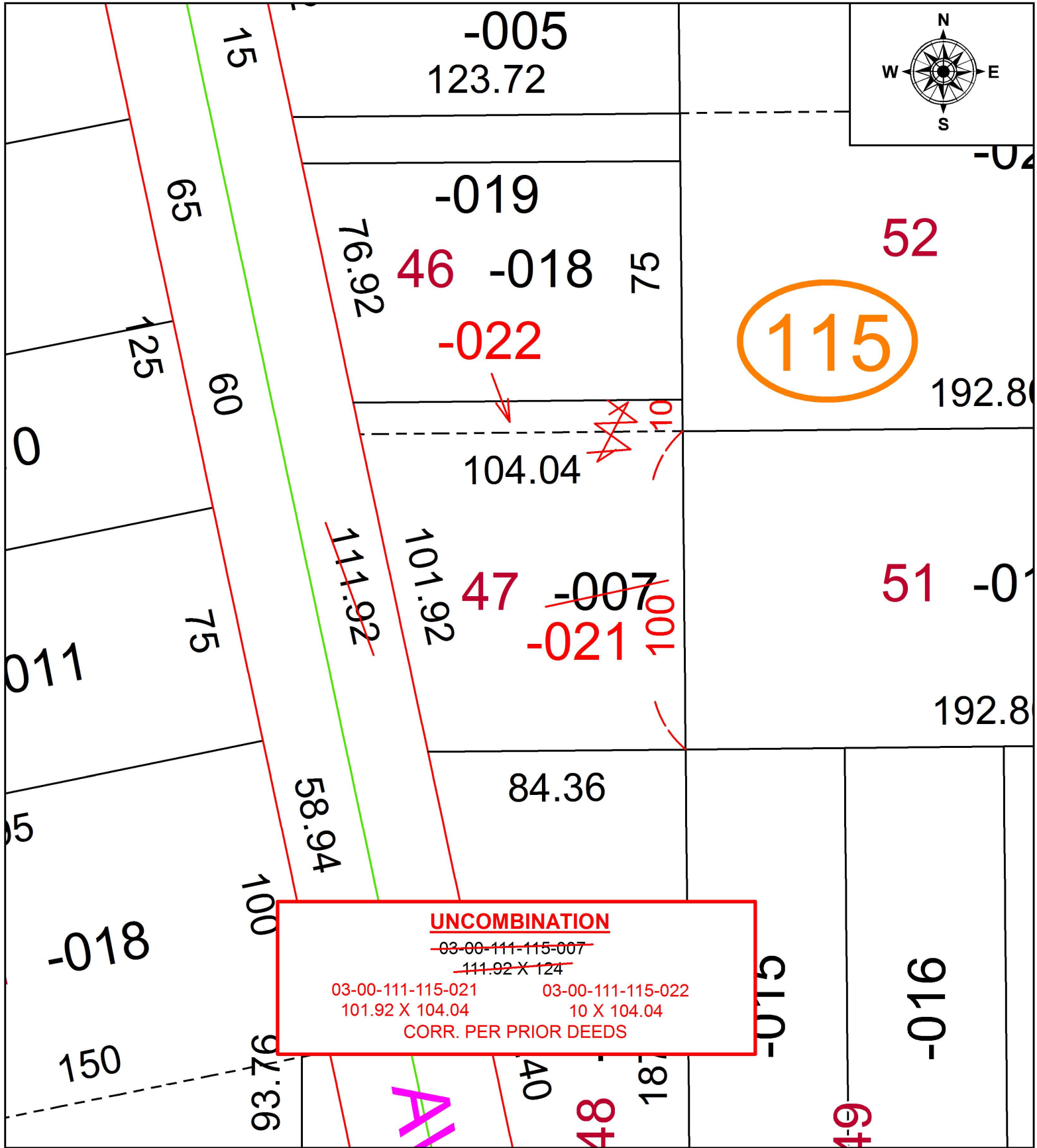


PARENT PARCEL: 03-00-111-115-007

CHILD PARCEL: 03-00-111-115-021, -022

STARTING POINT: SOUTHEAST CORNER OF S/L 46

17-03797-U



SPLITS/DEEDS PROCESSED
LORAIN COUNTY TAX MAP DEPARTMENT
226 MIDDLE AVE. ELYRIA, OH

SURVEYED BY:	N/A
CLOSURE:	N/A
MAP PAGE(S):	3-00-111
APPROVED BY:	RRM DATE: 11-2-17
SCALE:	1" = 40' PRIOR INSTRUMENT: 20170649044