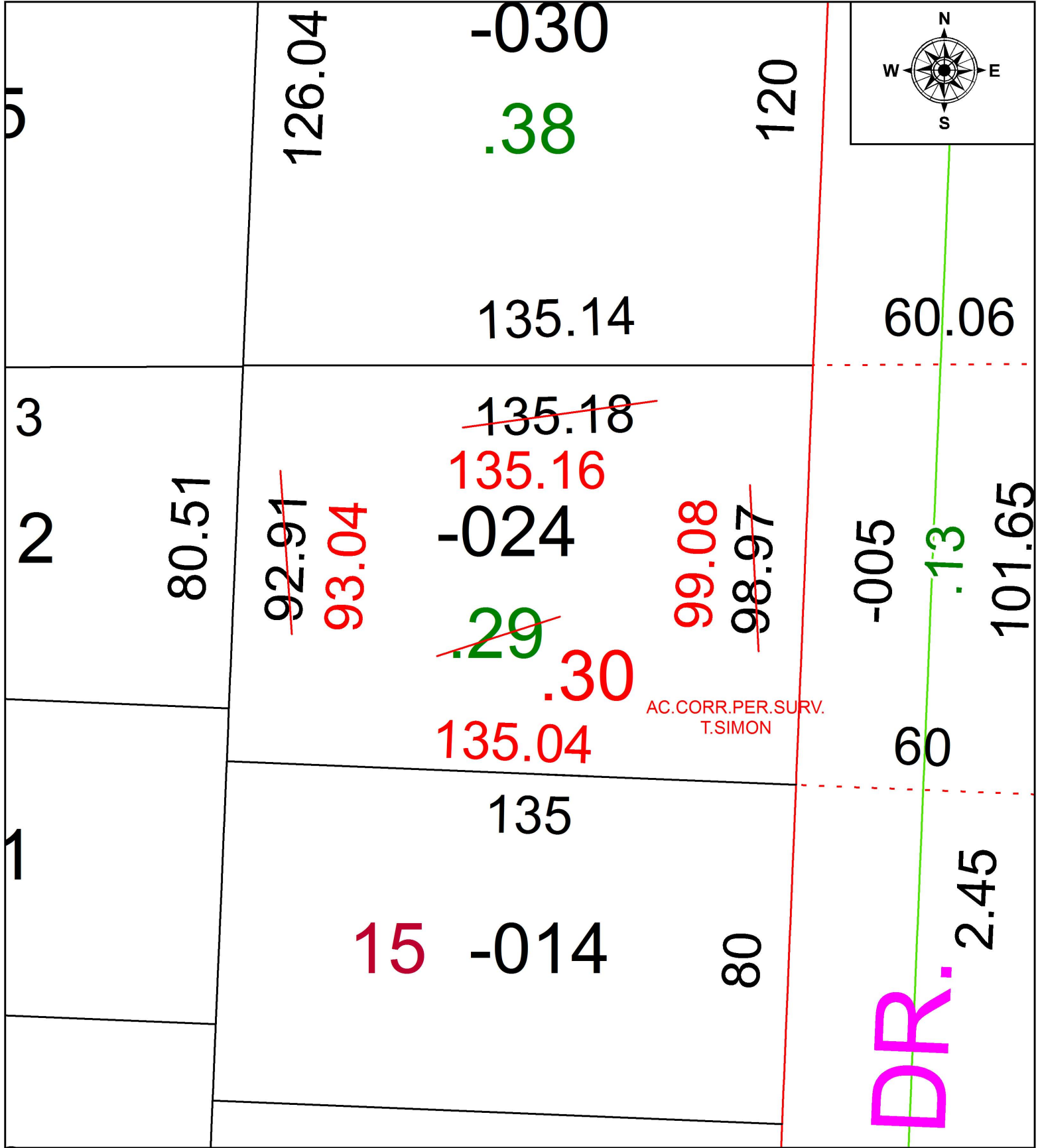


PARENT PARCEL: 05-00-039-105-024

CHILD PARCEL: XX-XX-XXX-XXX-XXX

STARTING POINT: NORTHEAST CORNER OF S/L 15 IN ORCHARD VALLEY SUB. NO.2

17-03796-D



**SPLITS/DEEDS PROCESSED**  
LORAIN COUNTY TAX MAP DEPARTMENT  
226 MIDDLE AVE. ELYRIA, OH

SURVEYED BY:	THOMAS A. SIMON
CLOSURE:	1: 153,177
MAP PAGE(S):	5-00-039
APPROVED BY:	RRM DATE: 10-30-17
SCALE:	1" = 30' PRIOR INSTRUMENT: 20170628310