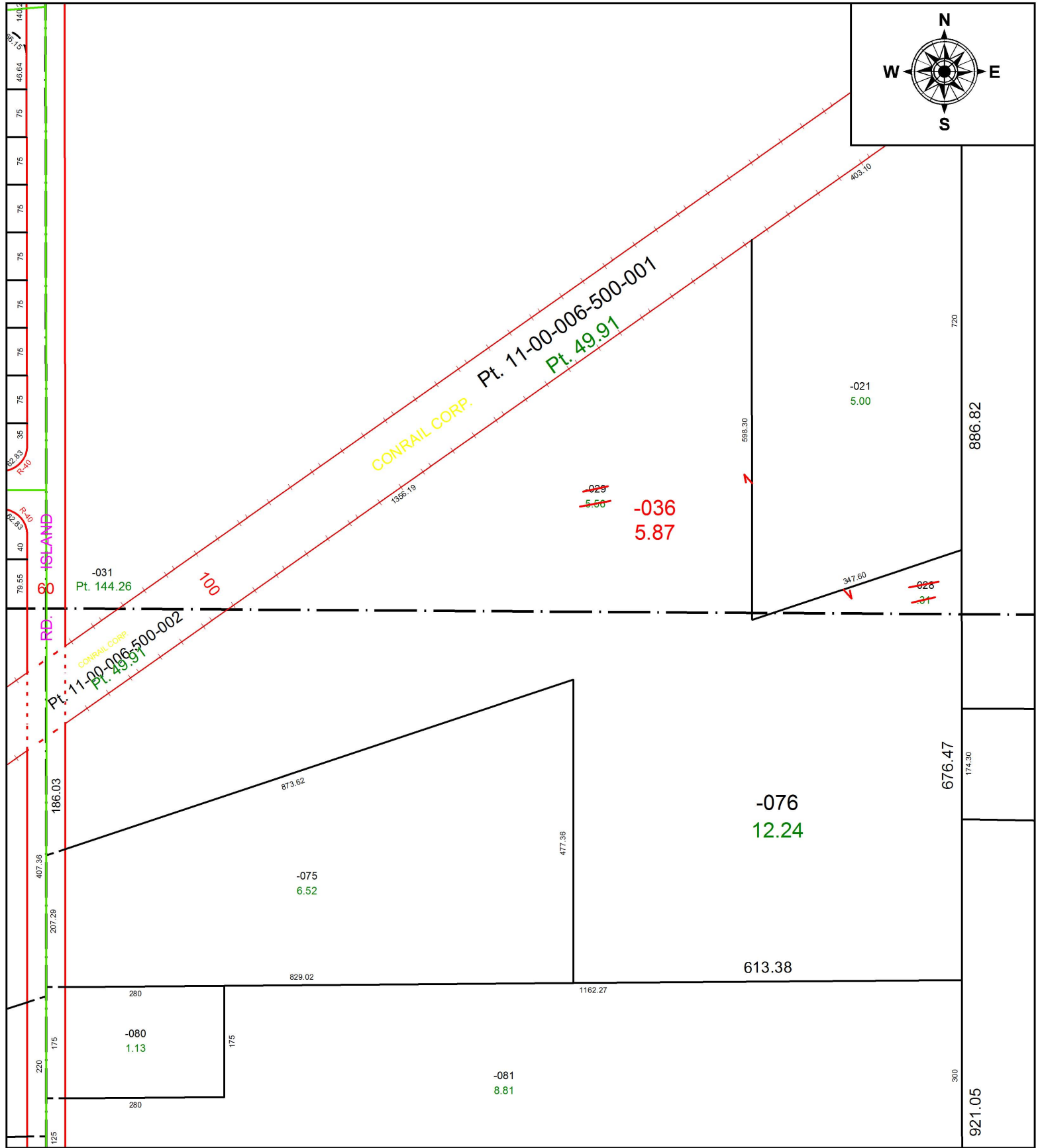


PARENT PARCEL: 11-00-024-000-076, 11-00-025-000-028, -029

CHILD PARCEL: 11-00-024-000-076, 11-00-025-000-036

STARTING POINT: INTERSECTION OF C/L OF ELM RD. AND C/L OF ISLAND RD.

17-03793-C



SPLITS/DEEDS PROCESSED
LORAIN COUNTY TAX MAP DEPARTMENT
226 MIDDLE AVE. ELYRIA, OH

SURVEYED BY: KEVIN S. BRAUN
CLOSURE: 1: 434,443
MAP PAGE(S): 11-00-024
APPROVED BY: RRM DATE: 10-26-17
SCALE: 1" = 200 PRIOR INSTRUMENT: 20070225206