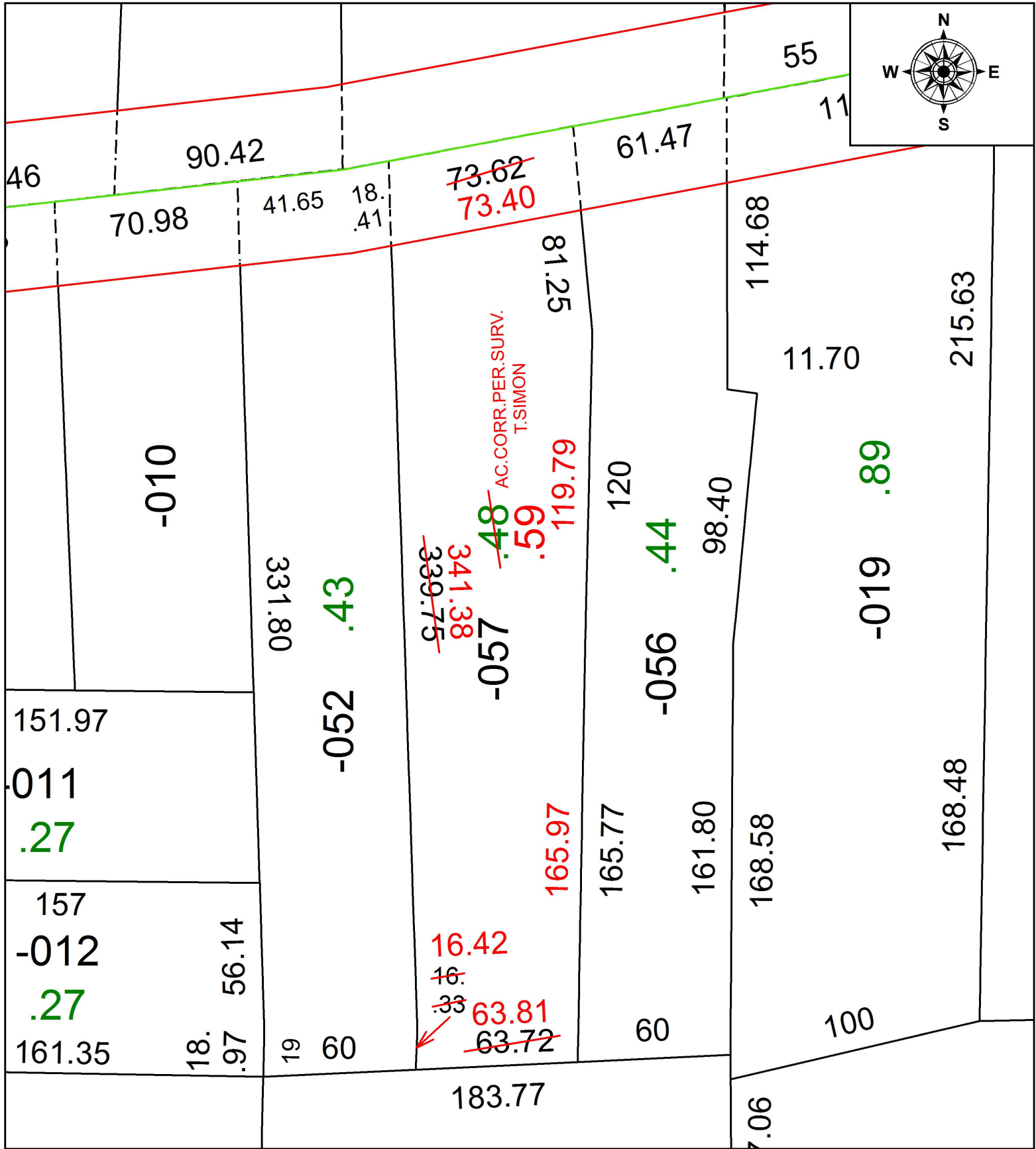


PARENT PARCEL: 05-00-011-105-057

CHILD PARCEL: XX-XX-XXX-XXX-XXX

STARTING POINT: INTERSECTION OF C/L OF S.R.113 AND C/L OF ANNIS RD.

17-03788-D



SPLITS/DEEDS PROCESSED
 LORAIN COUNTY TAX MAP DEPARTMENT
 226 MIDDLE AVE. ELYRIA, OH

SURVEYED BY: THOMAS A. SIMON
 CLOSURE: 1: 91,989
 MAP PAGE(S): 5-00-011
 APPROVED BY: RRM DATE: 10-17-17
 SCALE: 1" = 50 PRIOR INSTRUMENT: 20150537394