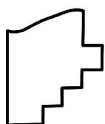
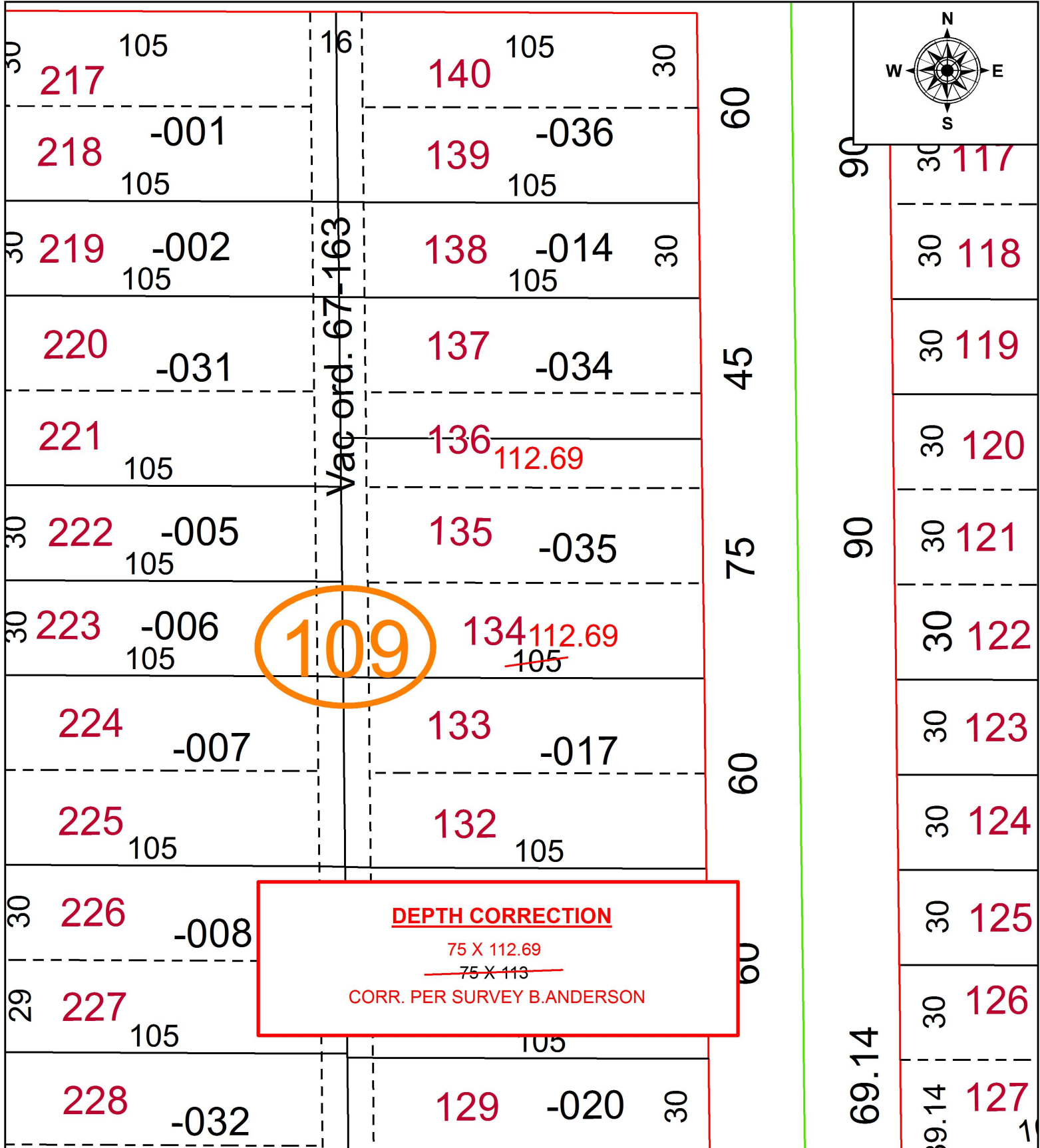


PARENT PARCEL: 03-00-075-109-035

CHILD PARCEL: XX-XX-XXX-XXX-XXX

STARTING POINT: NORTHEAST CORNER OF S/L 140

17-03787-D



**SPLITS/DEEDS PROCESSED**  
LORAIN COUNTY TAX MAP DEPARTMENT  
226 MIDDLE AVE. ELYRIA, OH

SURVEYED BY: BRENT D. ANDERSON

CLOSURE: 1: 2147483648

MAP PAGE(S): 3-00-075

APPROVED BY: RRM DATE: 10-17-17

SCALE: 1" = 40

PRIOR INSTRUMENT: 20170637842