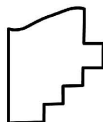
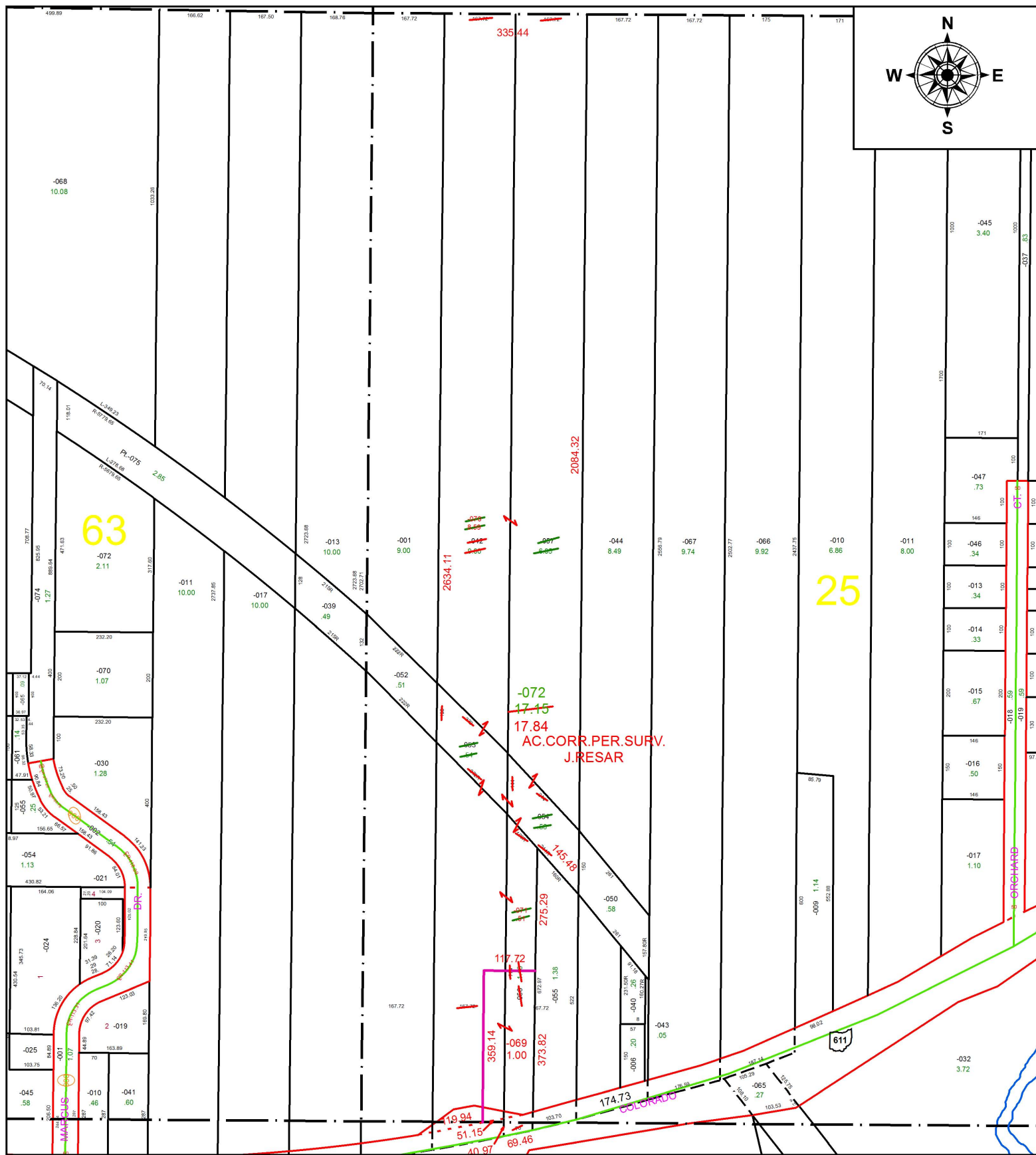


PARENT PARCEL: 03-00-025-000-042, -053, -054, -056, -057

CHILD PARCEL: 03-00-025-000-069 THRU -072

STARTING POINT: INTERSECTION OF NORTH LINE OF S.R.611 AND EXTENSION OF WEST LINE OF O.L.25

18-03786



SPLITS/DEEDS PROCESSED
 LORAIN COUNTY TAX MAP DEPARTMENT
 226 MIDDLE AVE. ELYRIA, OH

SURVEYED BY: JAMES RESAR
 CLOSURE: 1: 59,972
 MAP PAGE(S): 3-00-025
 APPROVED BY: RRM DATE: 3-13-18
 SCALE: 1" = 300 PRIOR INSTRUMENT: 20060166594