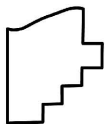
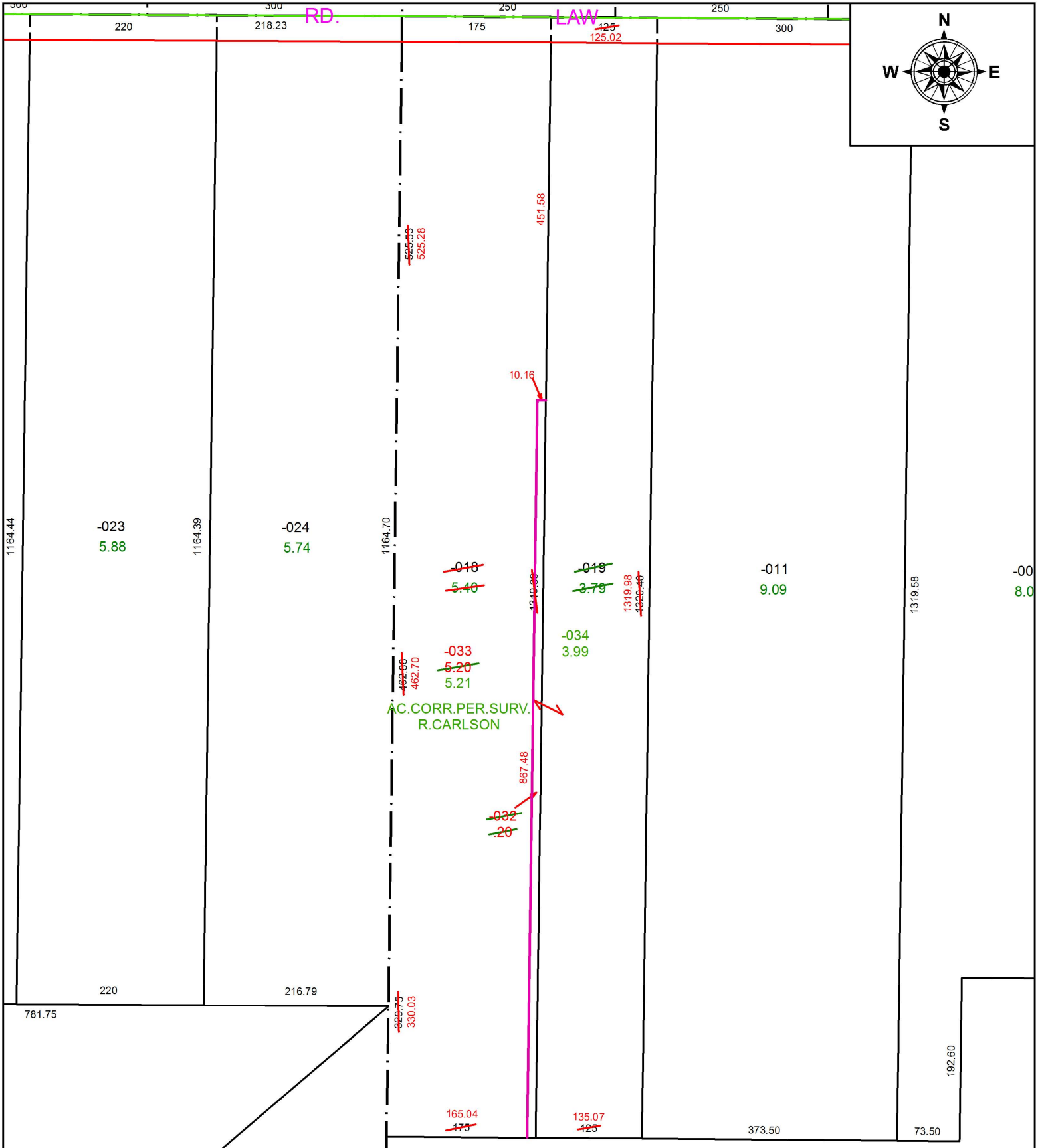


PARENT PARCEL: 16-00-076-000-018, -019

CHILD PARCEL: 16-00-076-000-032 THRU -034

STARTING POINT: NORTHWEST CORNER OF O.L.76

18-03784



SPLITS/DEEDS PROCESSED
 LORAIN COUNTY TAX MAP DEPARTMENT
 226 MIDDLE AVE. ELYRIA, OH

SURVEYED BY: RICHARD D. CARLSON

CLOSURE: 1: 776,619

MAP PAGE(S): 16-00-076

APPROVED BY: RRM DATE: 2-14-18

SCALE: 1" = 150 PRIOR INSTRUMENT: 20050083378