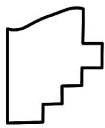
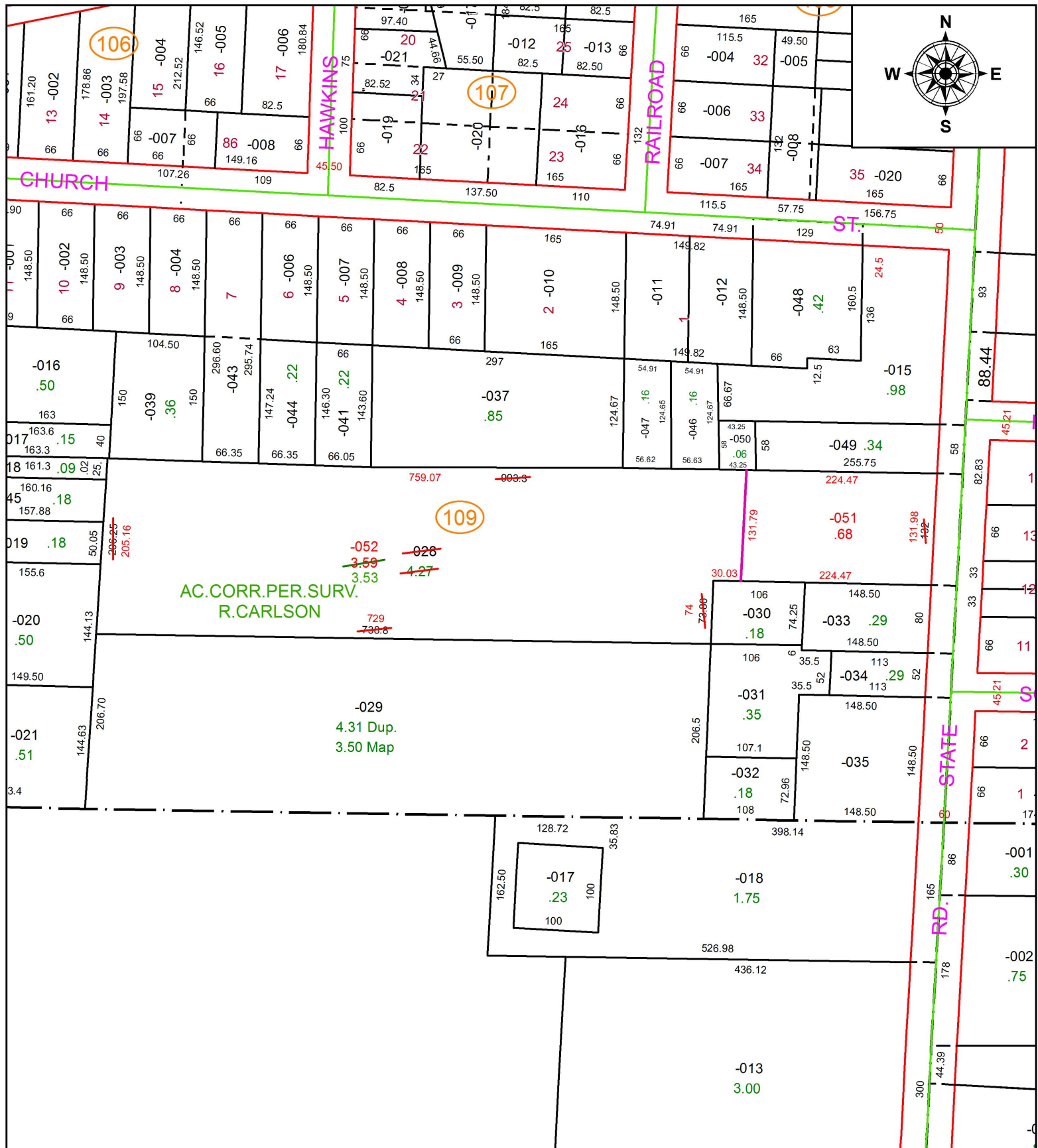


PARENT PARCEL: 13-11-016-109-028

CHILD PARCEL: 13-11-016-109-051, -052

STARTING POINT: INTERSECTION OF C/L OF STATE ST. AND SOUTH LINE OF O.L.16

18-03783



SPLITS/DEEDS PROCESSED
 LORAIN COUNTY TAX MAP DEPARTMENT
 226 MIDDLE AVE. ELYRIA, OH

SURVEYED BY: RICHARD D. CARLSON
CLOSURE: 1: 169,515
MAP PAGE(S): 13-11-016
APPROVED BY: RRM **DATE:** 2-15-18
SCALE: 1" = 150 **PRIOR INSTRUMENT:** 20170614666