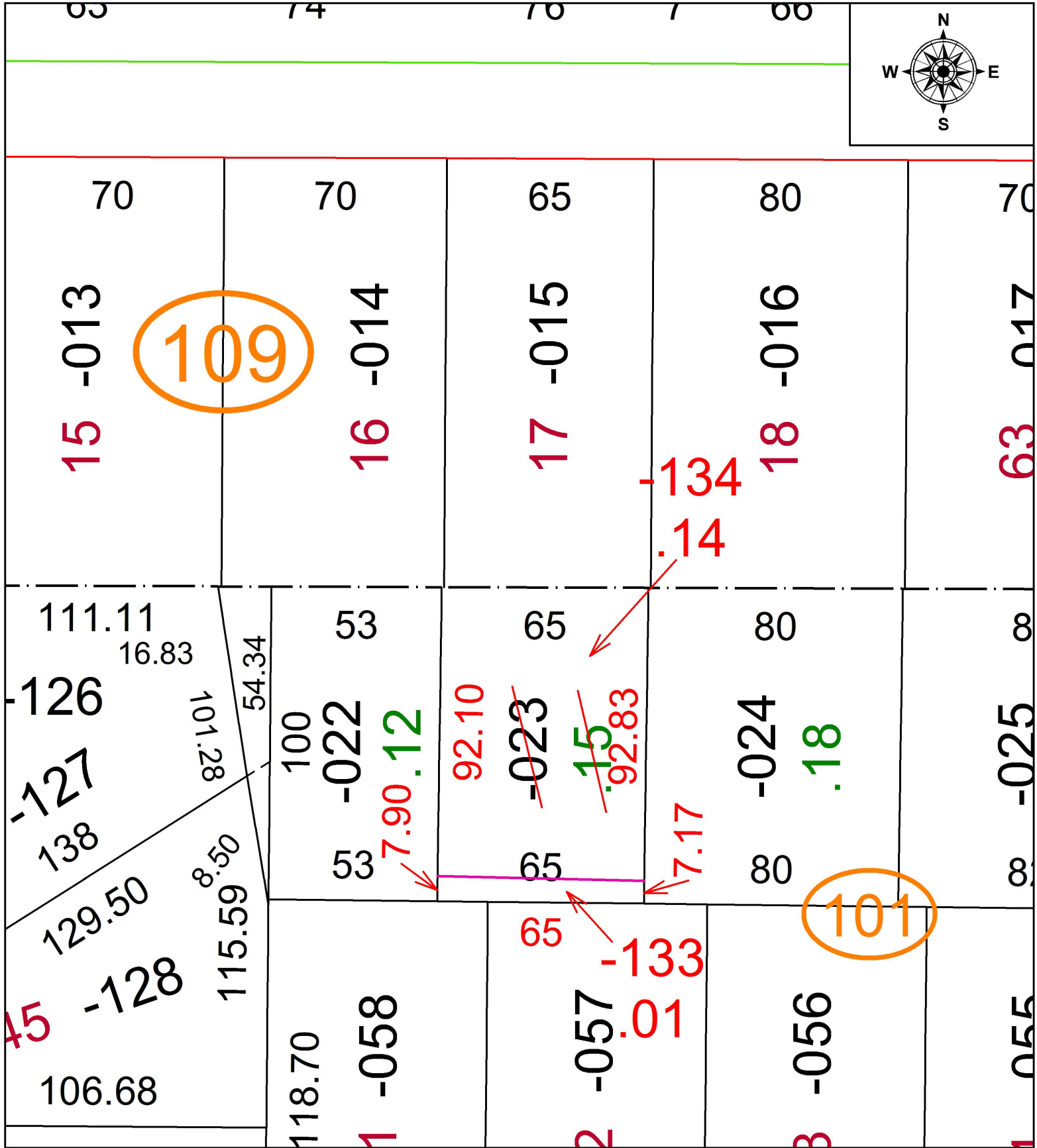
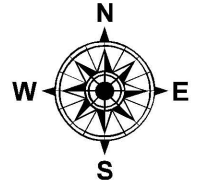


PARENT PARCEL: 06-25-026-101-023

CHILD PARCEL: 06-25-026-101-133, -134

STARTING POINT: NORTHEAST CORNER OF 17 IN SHERWOOD MANOR SUB. NO. 2

18-03776



SPLITS/DEEDS PROCESSED
LORAIN COUNTY TAX MAP DEPARTMENT
226 MIDDLE AVE. ELYRIA, OH

SURVEYED BY: JAMES DALE BARNES
CLOSURE: 1: 59,365
MAP PAGE(S): 6-71
APPROVED BY: RRM DATE: 1-29-18
SCALE: 1" = 40 PRIOR INSTRUMENT: 20150563761