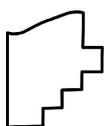
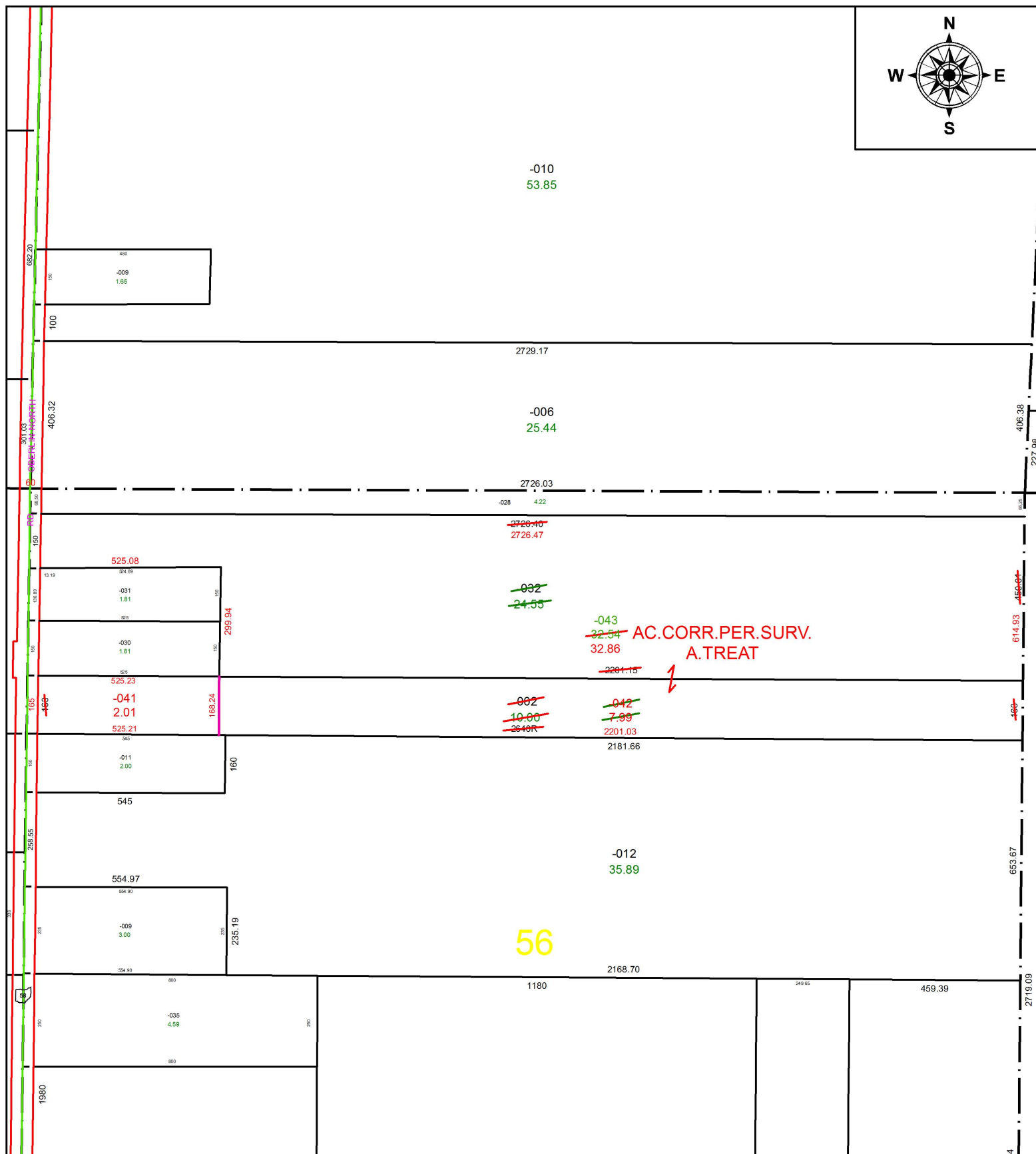


PARENT PARCEL: 09-00-056-000-002, -032

CHILD PARCEL: 09-00-056-000-041 THRU -043

STARTING POINT: NORTHEAST CORNER OF O.L.56

18-03775



SPLITS/DEEDS PROCESSED
LORAIN COUNTY TAX MAP DEPARTMENT
226 MIDDLE AVE. ELYRIA, OH

SURVEYED BY: ADAM D. TREAT
CLOSURE: 1: 156,822
MAP PAGE(S): 9-00-056
APPROVED BY: RRM DATE: 1-29-18
SCALE: 1" = 350 PRIOR INSTRUMENT: 20000704369