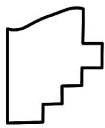
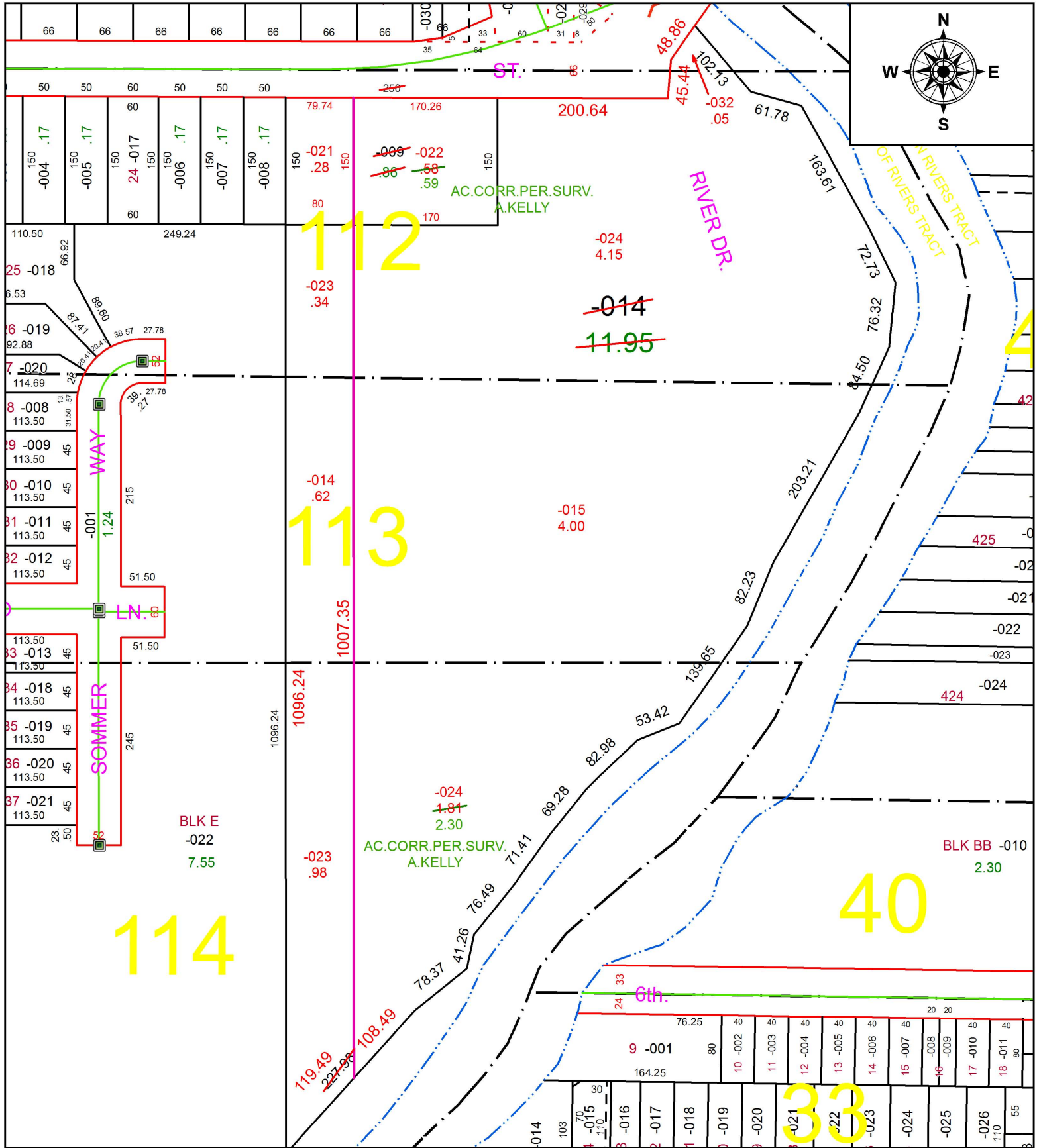


PARENT PARCEL: 06-24-112-000-009, -014

CHILD PARCEL: 06-24-111-000-032, 06-24-112-000-021 THRU -024, 06-24-113-000-014, -015, 06-24-114-000-023, -024

18-03772

STARTING POINT: INTERSECTION OF C/L OF 3RD ST. AND C/L OF WEST RIVER RD.



SPLITS/DEEDS PROCESSED
 LORAIN COUNTY TAX MAP DEPARTMENT
 226 MIDDLE AVE. ELYRIA, OH

SURVEYED BY: AMY M. KELLY
CLOSURE: 1: 139,374
MAP PAGE(S): 6-118
APPROVED BY: RRM **DATE:** 1-19-18
SCALE: 1" = 150 **PRIOR INSTRUMENT:** 20060163247