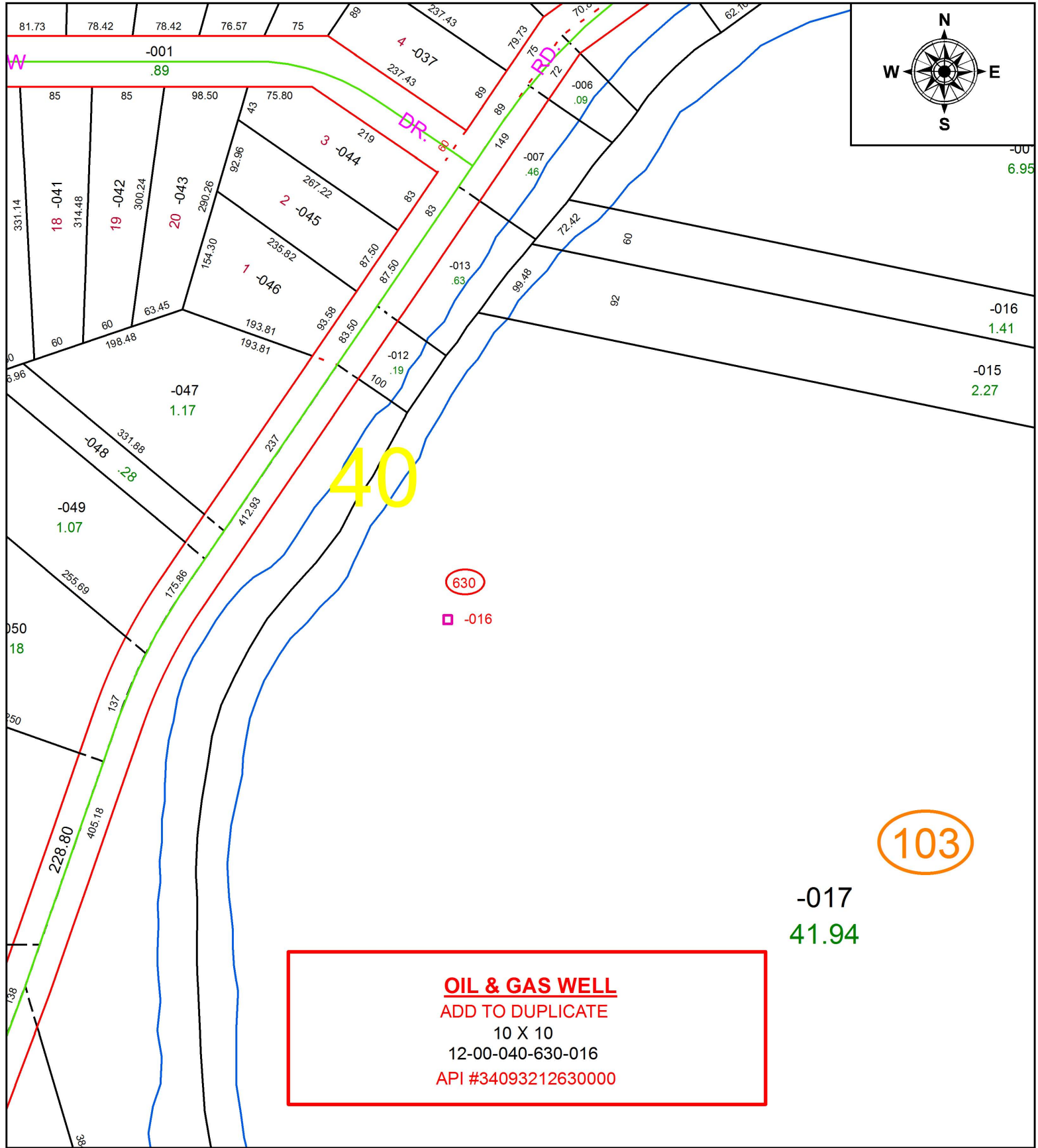


PARENT PARCEL: 12-00-040-103-017

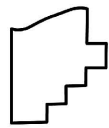
CHILD PARCEL: 12-00-040-630-016

STARTING POINT:

17-03768-G



OIL & GAS WELL
 ADD TO DUPLICATE
 10 X 10
 12-00-040-630-016
 API #34093212630000



SPLITS/DEEDS PROCESSED
 LORAIN COUNTY TAX MAP DEPARTMENT
 226 MIDDLE AVE. ELYRIA, OH

SURVEYED BY:	N/A
CLOSURE:	N/A
MAP PAGE(S):	12-00-040
APPROVED BY:	RRM DATE: 9-25-17
SCALE:	1" = 150
PRIOR INSTRUMENT:	N/A