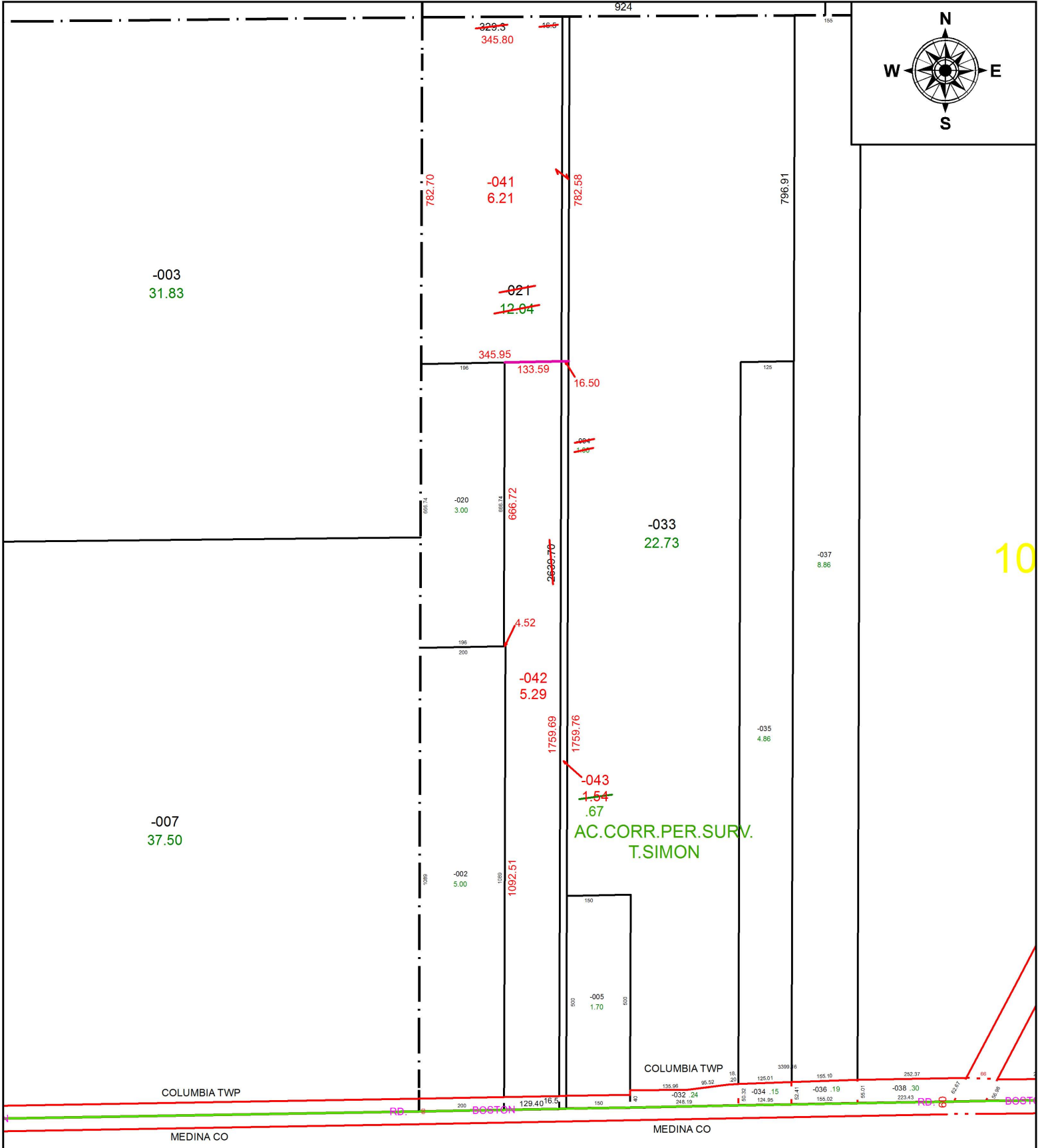
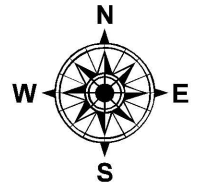


PARENT PARCEL: 12-00-010-000-004, -021

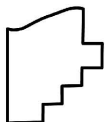
CHILD PARCEL: 12-00-010-000-041 THRU -043

STARTING POINT: SOUTHWEST CORNER OF O.L.10

18-03767



10



**SPLITS/DEEDS PROCESSED**  
 LORAIN COUNTY TAX MAP DEPARTMENT  
 226 MIDDLE AVE. ELYRIA, OH

SURVEYED BY: THOMAS A. SIMON  
 CLOSURE: 1: 292,184  
 MAP PAGE(S): 12-00-010  
 APPROVED BY: RRM DATE: 1-4-18  
 SCALE: 1" = 300 PRIOR INSTRUMENT: 20150544562