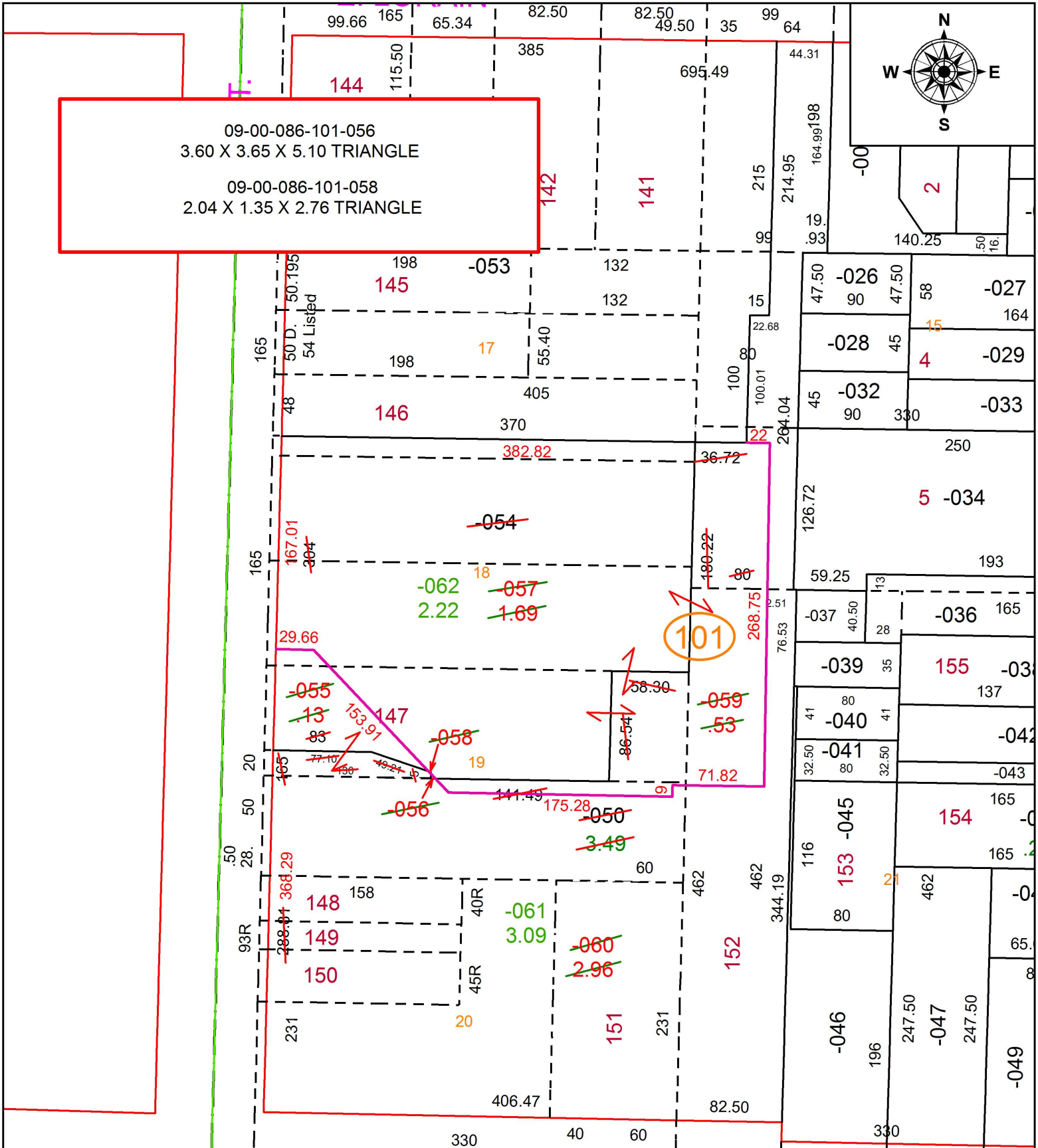


PARENT PARCEL: 09-00-086-101-050, -054

CHILD PARCEL: 09-00-086-101-055 THRU -062

STARTING POINT: INTERSECTION OF C/L OF E. COLLEGE ST. AND C/L OF S.R.58

17-03765



SPLITS/DEEDS PROCESSED
 LORAIN COUNTY TAX MAP DEPARTMENT
 226 MIDDLE AVE. ELYRIA, OH

SURVEYED BY: STEVEN J. METCALF

CLOSURE: 1: 49,397

MAP PAGE(S): 9-00-086

APPROVED BY: RRM DATE: 1-18-18

SCALE: 1" = 100 PRIOR INSTRUMENT: 20140491173