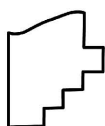
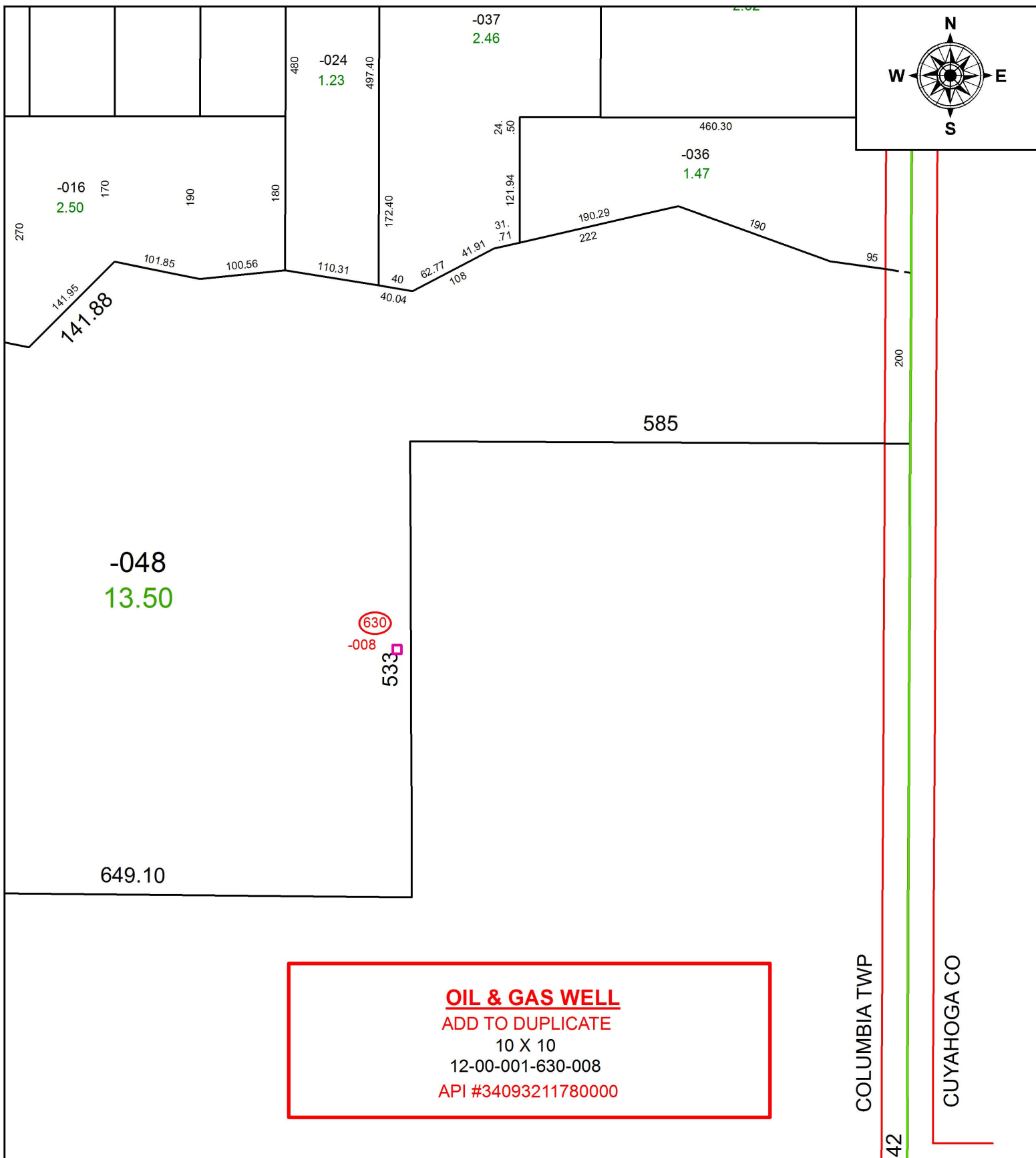


PARENT PARCEL: 12-00-001-000-048

CHILD PARCEL: 12-00-001-630-008

STARTING POINT:

17-03765-G



SPLITS/DEEDS PROCESSED
 LORAIN COUNTY TAX MAP DEPARTMENT
 226 MIDDLE AVE. ELYRIA, OH

SURVEYED BY: _____ N/A
 CLOSURE: _____ N/A
 MAP PAGE(S): _____ 12-00-001
 APPROVED BY: _____ RRM DATE: _____ 9-25-17
 SCALE: _____ 1" = 150 _____ PRIOR INSTRUMENT: _____ N/A