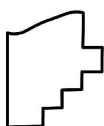
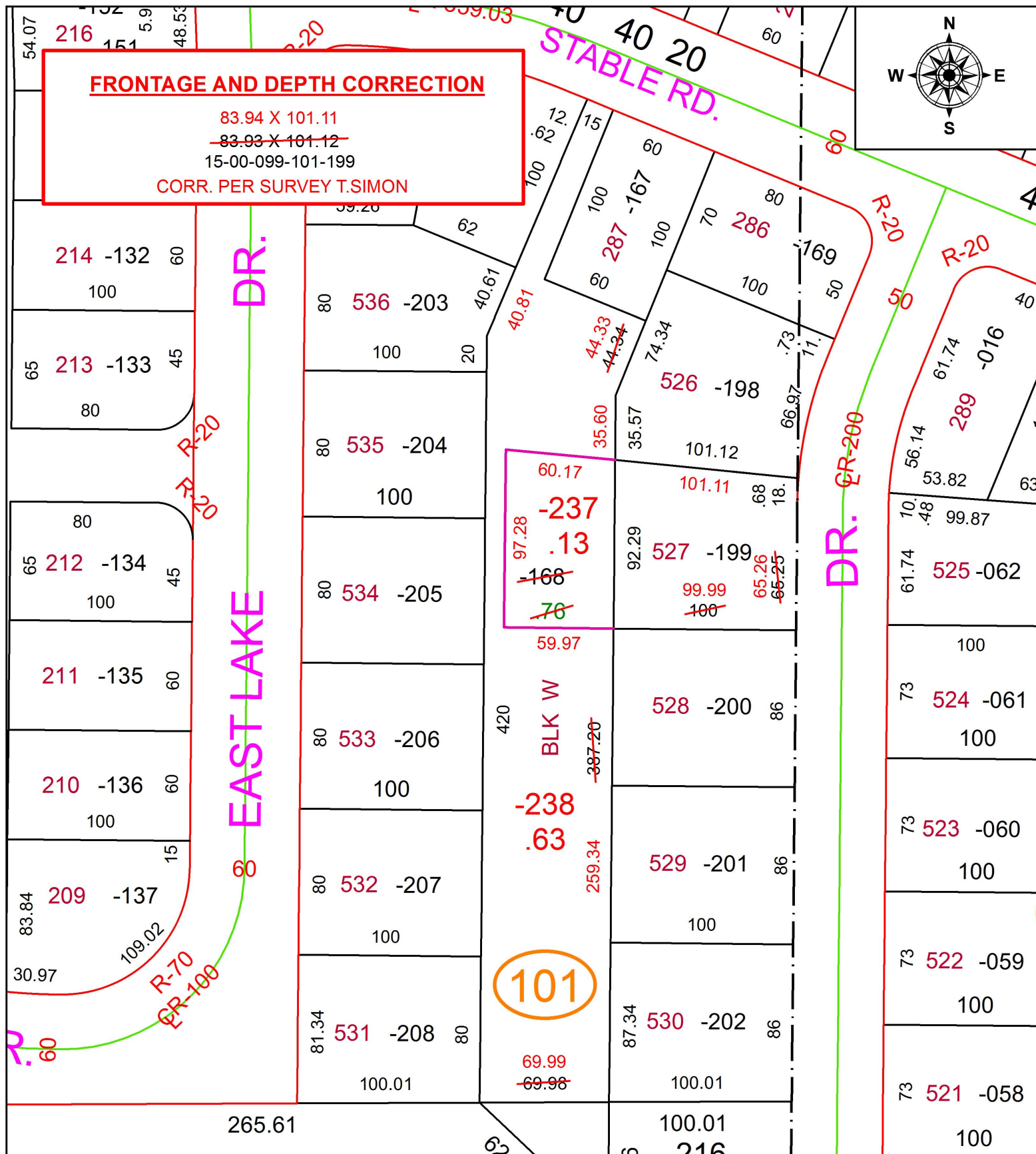


PARENT PARCEL: 15-00-099-101-168, -199

CHILD PARCEL: 15-00-099-101-199, -237, -238

STARTING POINT: NORTHWEST CORNER OF S/L 528

17-03761



SPLITS/DEEDS PROCESSED
LORAIN COUNTY TAX MAP DEPARTMENT
226 MIDDLE AVE. ELYRIA, OH

SURVEYED BY: THOMAS A. SIMON
CLOSURE: 1: 59,632
MAP PAGE(S): 15-00-099
APPROVED BY: RRM DATE: 1-18-18
SCALE: 1" = 70 PRIOR INSTRUMENT: 20150554268