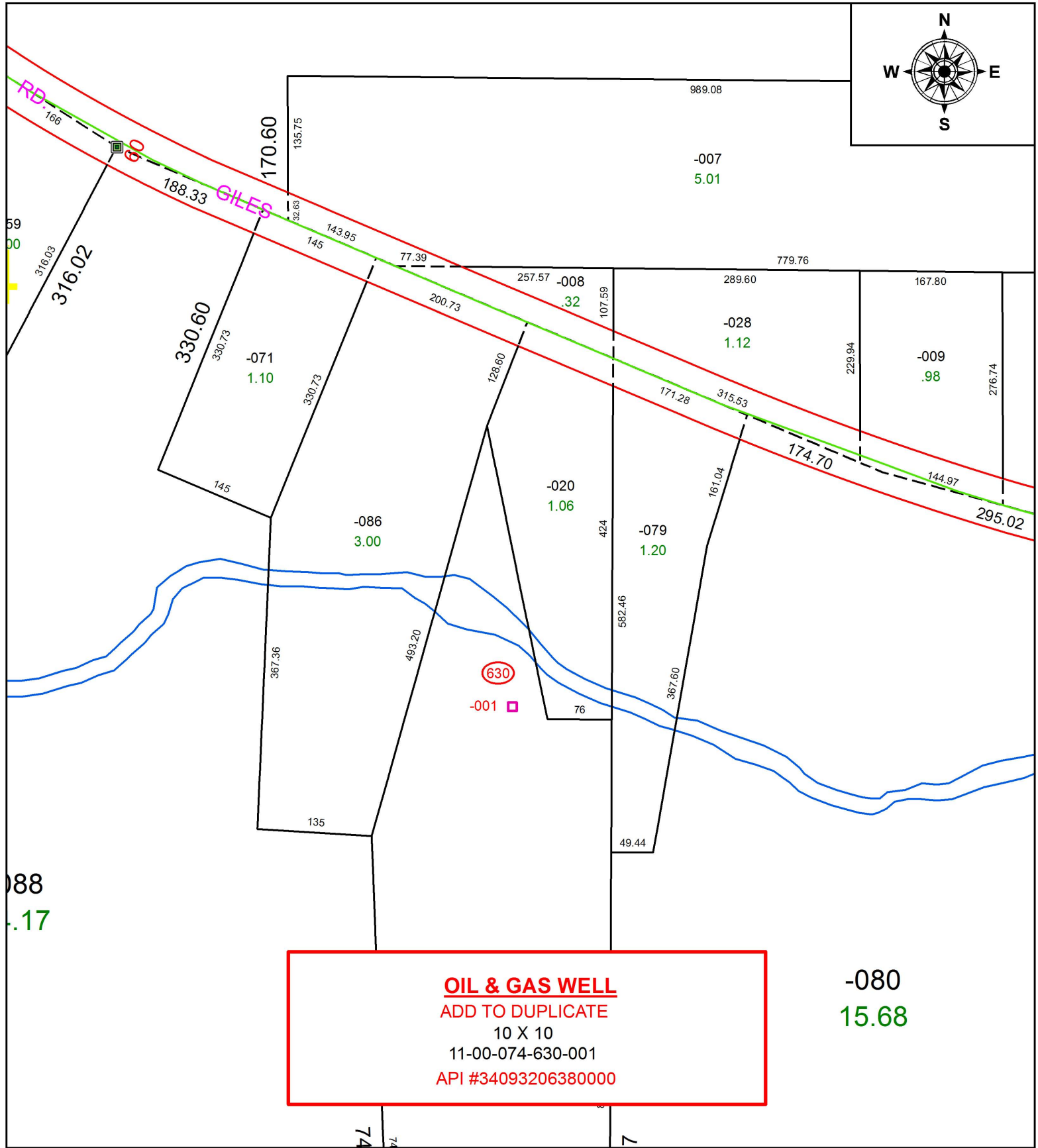


PARENT PARCEL: 11-00-074-000-026

CHILD PARCEL: 11-00-074-630-001

STARTING POINT:

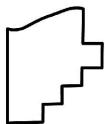
17-03761-G



OIL & GAS WELL
 ADD TO DUPLICATE
 10 X 10
 11-00-074-630-001
 API #34093206380000

088
.17

-080
15.68



SPLITS/DEEDS PROCESSED
 LORAIN COUNTY TAX MAP DEPARTMENT
 226 MIDDLE AVE. ELYRIA, OH

SURVEYED BY:	N/A
CLOSURE:	N/A
MAP PAGE(S):	11-00-074
APPROVED BY:	RRM DATE: 9-25-17
SCALE:	1" = 150
PRIOR INSTRUMENT:	N/A