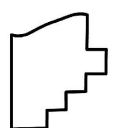
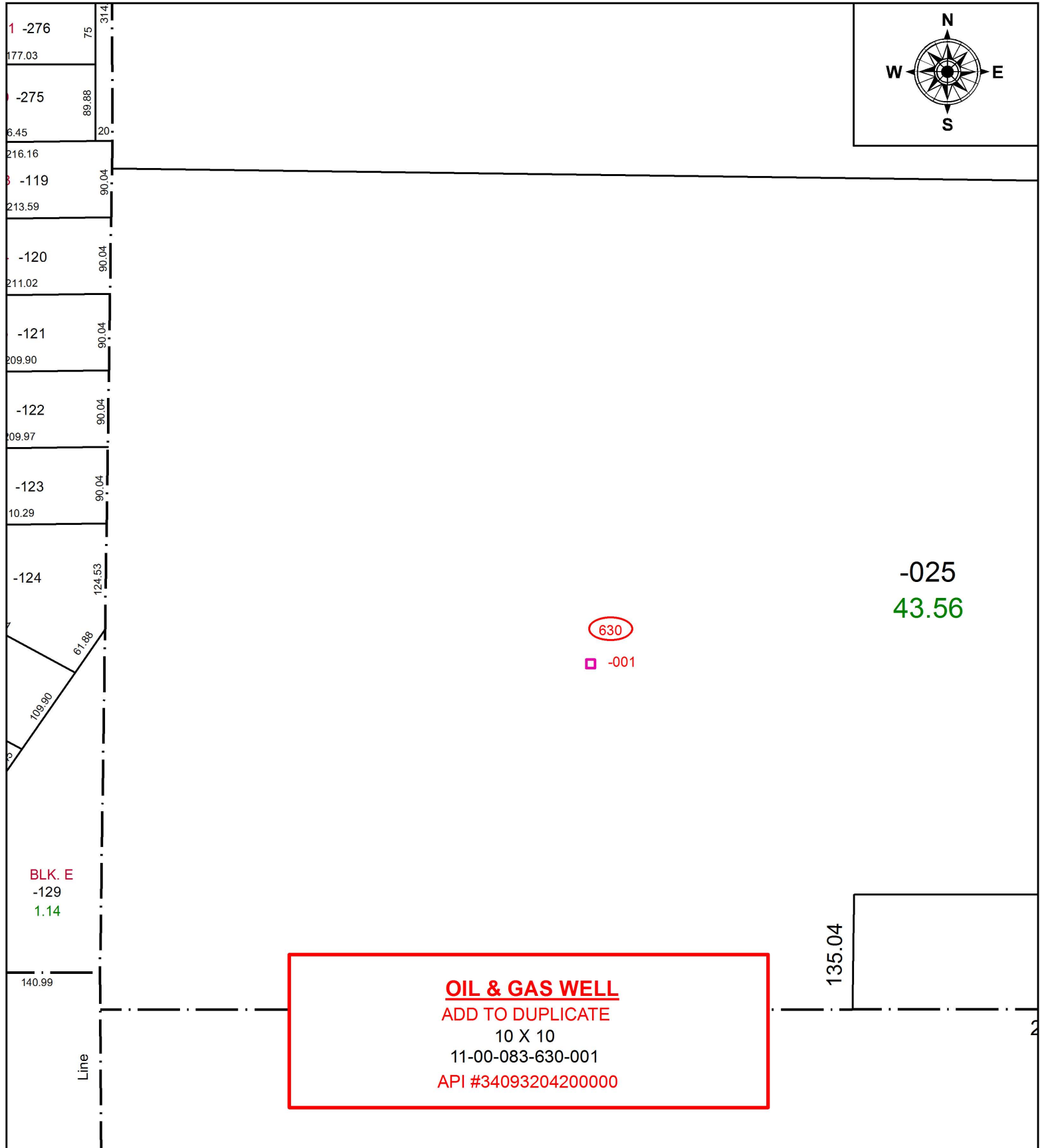


PARENT PARCEL: 11-00-083-000-025

CHILD PARCEL: 11-00-083-630-001

STARTING POINT:

17-03760-G



**SPLITS/DEEDS PROCESSED**  
 LORAIN COUNTY TAX MAP DEPARTMENT  
 226 MIDDLE AVE. ELYRIA, OH

SURVEYED BY: \_\_\_\_\_ N/A  
 CLOSURE: \_\_\_\_\_ N/A  
 MAP PAGE(S): \_\_\_\_\_ 11-00-083  
 APPROVED BY: \_\_\_\_\_ RRM DATE: \_\_\_\_\_ 9-25-17  
 SCALE: \_\_\_\_\_ 1" = 150 \_\_\_\_\_ PRIOR INSTRUMENT: \_\_\_\_\_ N/A