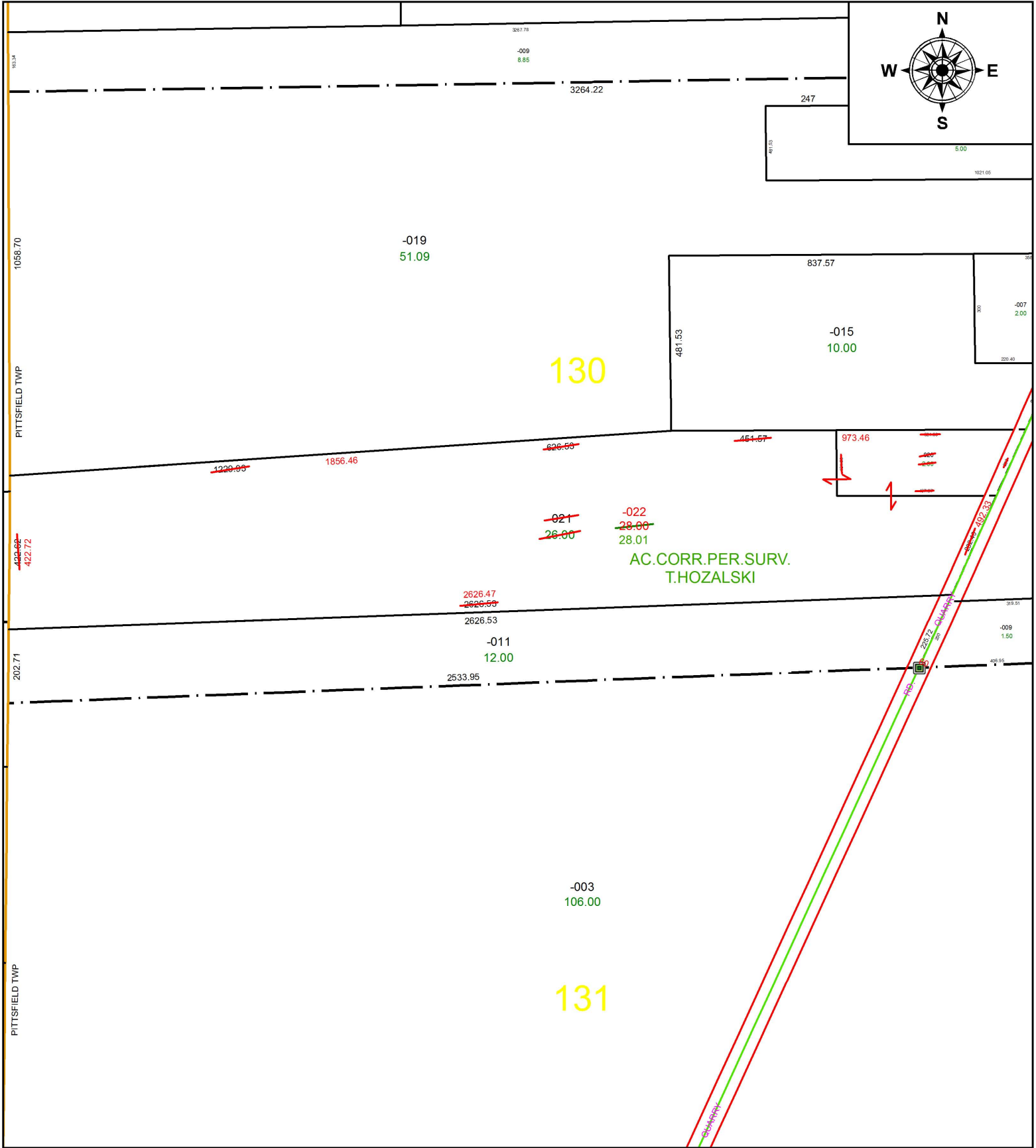


PARENT PARCEL: 14-00-130-000-020, -021

CHILD PARCEL: 14-00-130-000-022

STARTING POINT: INTERSECTION OF C/L OF MERRIAM RD. AND C/L OF QUARRY RD.

17-03754



SPLITS/DEEDS PROCESSED
 LORAIN COUNTY TAX MAP DEPARTMENT
 226 MIDDLE AVE. ELYRIA, OH

SURVEYED BY: TIMOTHY D. HOZALSKI

CLOSURE: 1: 560,123

MAP PAGE(S): 14-E

APPROVED BY: RRM **DATE:** 12-5-17

SCALE: 1" = 350 **PRIOR INSTRUMENT:** 20150549881