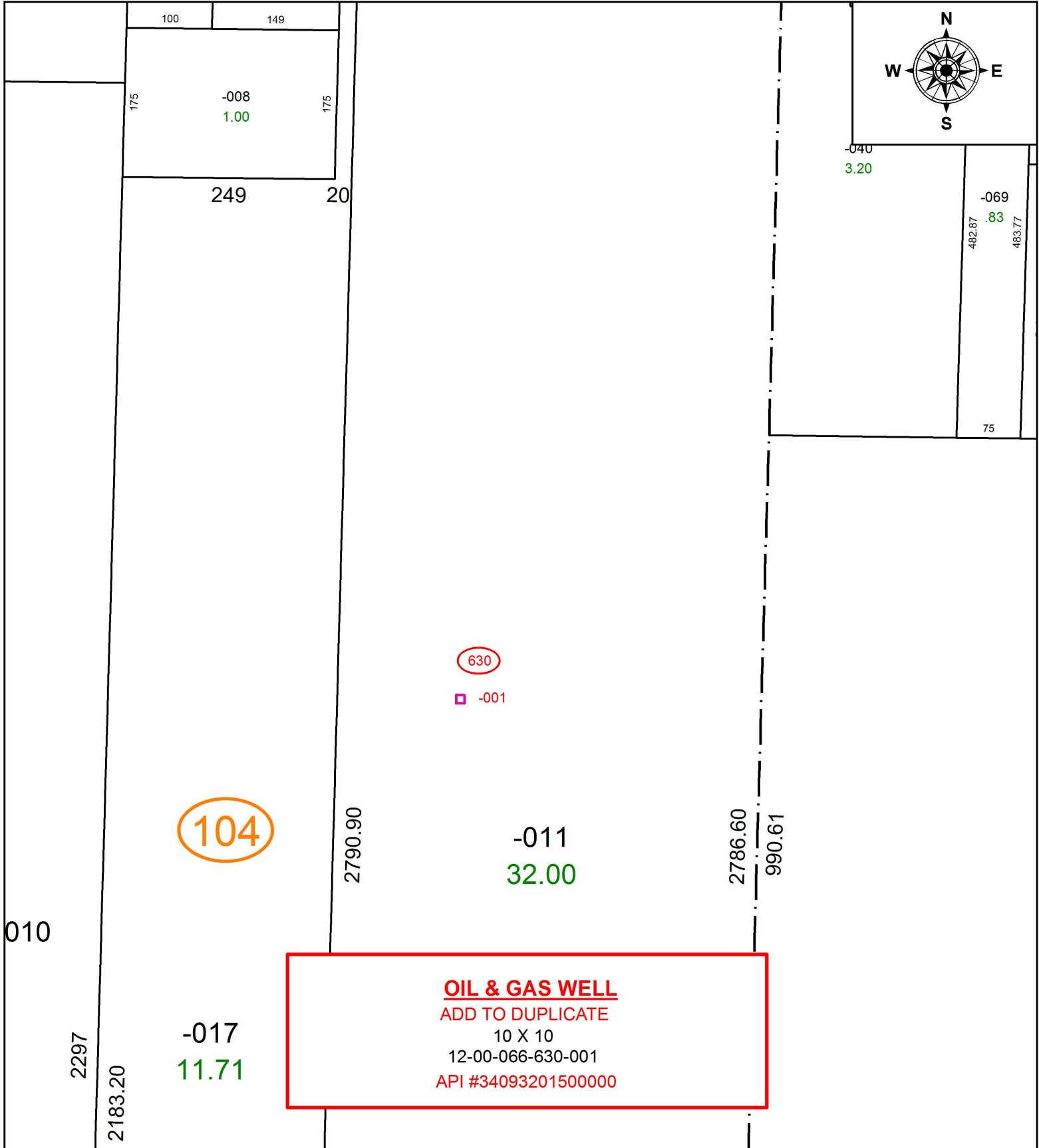


PARENT PARCEL: 12-00-066-104-011

CHILD PARCEL: 12-00-066-630-001

STARTING POINT:

17-03754-G



**OIL & GAS WELL**  
 ADD TO DUPLICATE  
 10 X 10  
 12-00-066-630-001  
 API #34093201500000



**SPLITS/DEEDS PROCESSED**  
 LORAIN COUNTY TAX MAP DEPARTMENT  
 226 MIDDLE AVE. ELYRIA, OH

SURVEYED BY: \_\_\_\_\_ N/A  
 CLOSURE: \_\_\_\_\_ N/A  
 MAP PAGE(S): \_\_\_\_\_ 12-00-066  
 APPROVED BY: \_\_\_\_\_ RRM DATE: \_\_\_\_\_ 9-25-17  
 SCALE: \_\_\_\_\_ 1" = 150 PRIORITY INSTRUMENT: \_\_\_\_\_ N/A