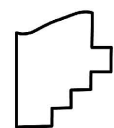
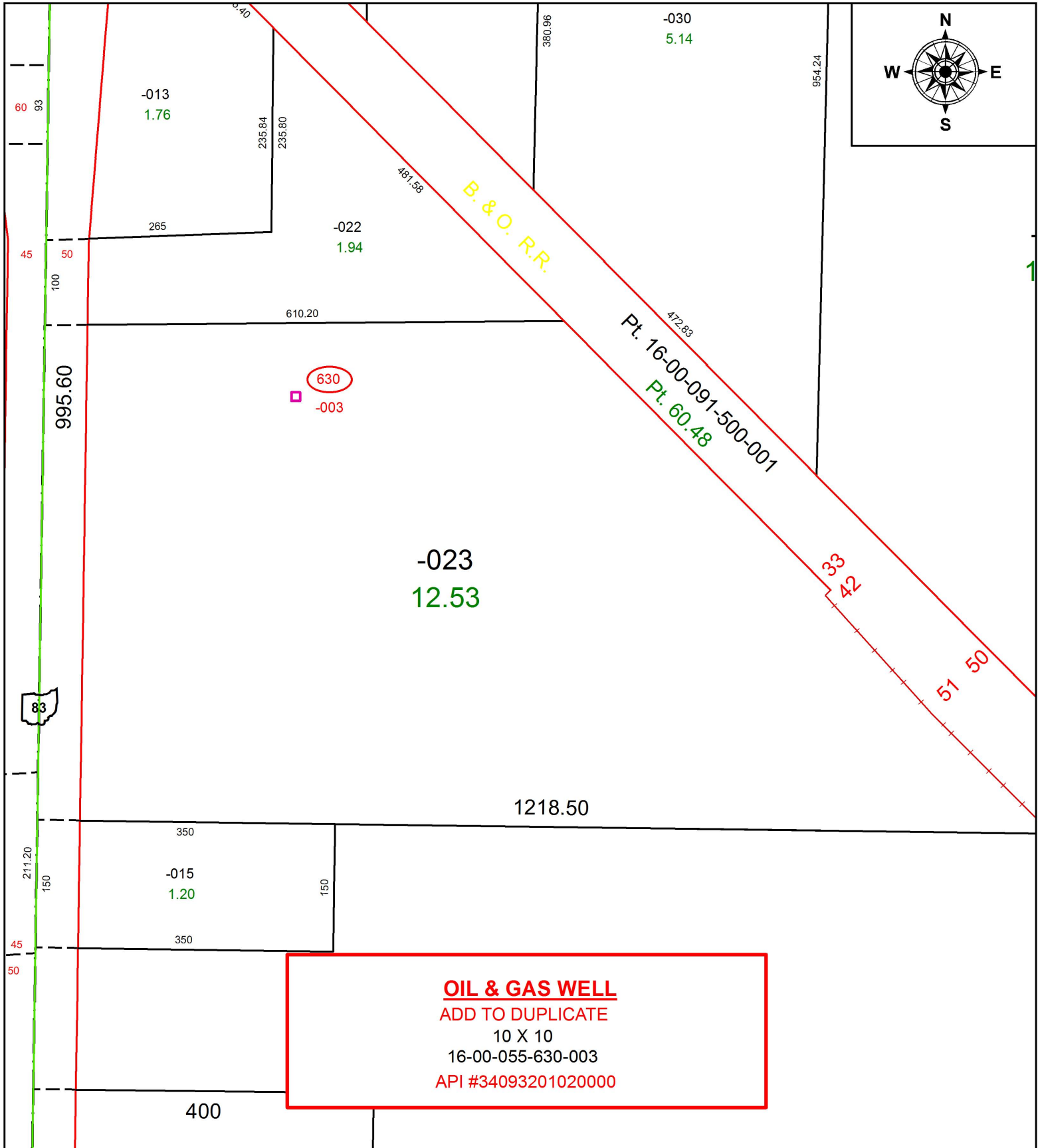


PARENT PARCEL: 16-00-055-000-023

CHILD PARCEL: 16-00-055-630-003

STARTING POINT:

17-03750-G



**SPLITS/DEEDS PROCESSED**  
LORAIN COUNTY TAX MAP DEPARTMENT  
226 MIDDLE AVE. ELYRIA, OH

SURVEYED BY:	N/A
CLOSURE:	N/A
MAP PAGE(S):	16-00-055
APPROVED BY:	RRM DATE: 9-25-17
SCALE:	1" = 150 PRIOR INSTRUMENT: N/A