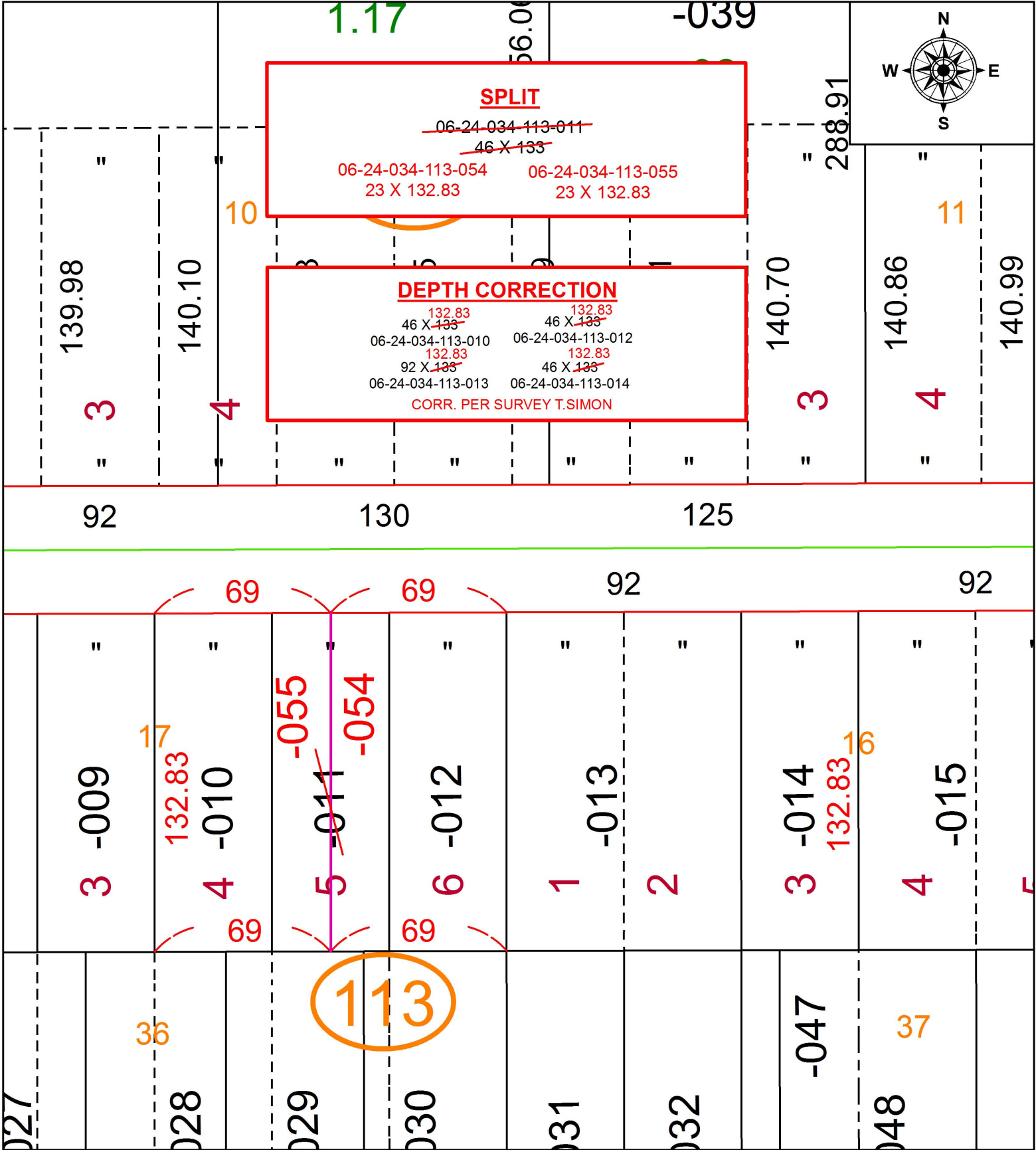


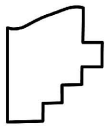
PARENT PARCEL: 06-24-034-113-010 THRU -014

CHILD PARCEL: 06-24-034-113-010, -012, -013, -014, -054, -055

STARTING POINT: INTERSECTION OF C/L OF ADAMS ST. AND C/L OF WARDEN AVE.

17-03748



 **SPLITS/DEEDS PROCESSED**
 LORAIN COUNTY TAX MAP DEPARTMENT
 226 MIDDLE AVE. ELYRIA, OH

SURVEYED BY: THOMAS A. SIMON
 CLOSURE: 1: 2147483648
 MAP PAGE(S): 6-63
 APPROVED BY: RRM DATE: 11-27-17
 SCALE: 1" = 50 PRIOR INSTRUMENT: 20080250335