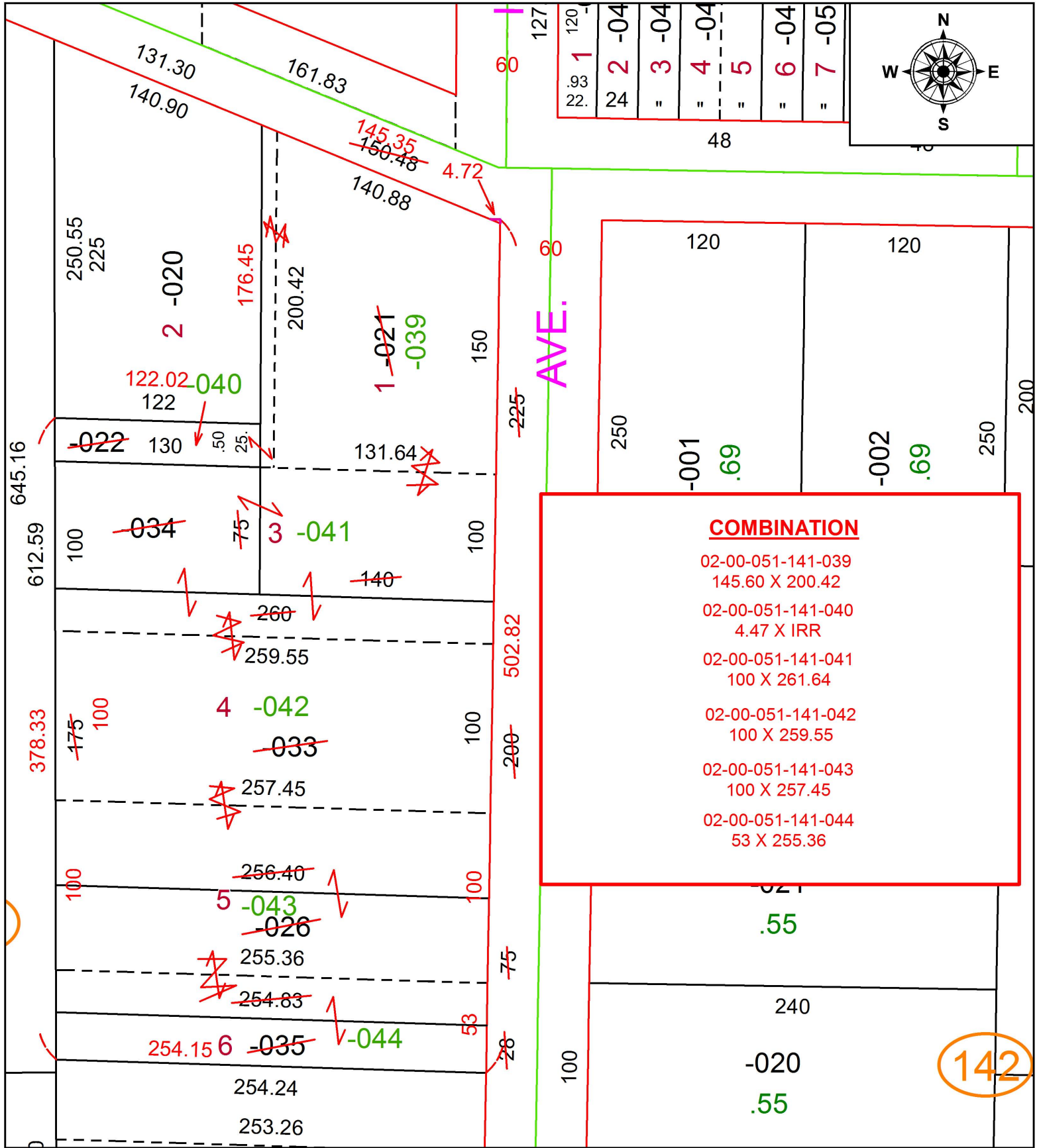


PARENT PARCEL: 02-00-051-141-021, -022, -026, -033, -034, -035

CHILD PARCEL: 02-00-051-141-039 THRU -044

STARTING POINT: NORTHEAST CORNER OF S/L 1

17-03744



COMBINATION

02-00-051-141-039
145.60 X 200.42

02-00-051-141-040
4.47 X IRR

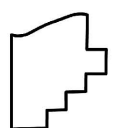
02-00-051-141-041
100 X 261.64

02-00-051-141-042
100 X 259.55

02-00-051-141-043
100 X 257.45

02-00-051-141-044
53 X 255.36

142



SPLITS/DEEDS PROCESSED
LORAIN COUNTY TAX MAP DEPARTMENT
226 MIDDLE AVE. ELYRIA, OH

SURVEYED BY: BEN BLEDSOE
CLOSURE: 1: 185,174
MAP PAGE(S): 2-00-051
APPROVED BY: RRM DATE: 11-14-17
SCALE: 1" = 75' PRIOR INSTRUMENT: 20020862421