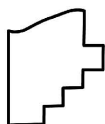
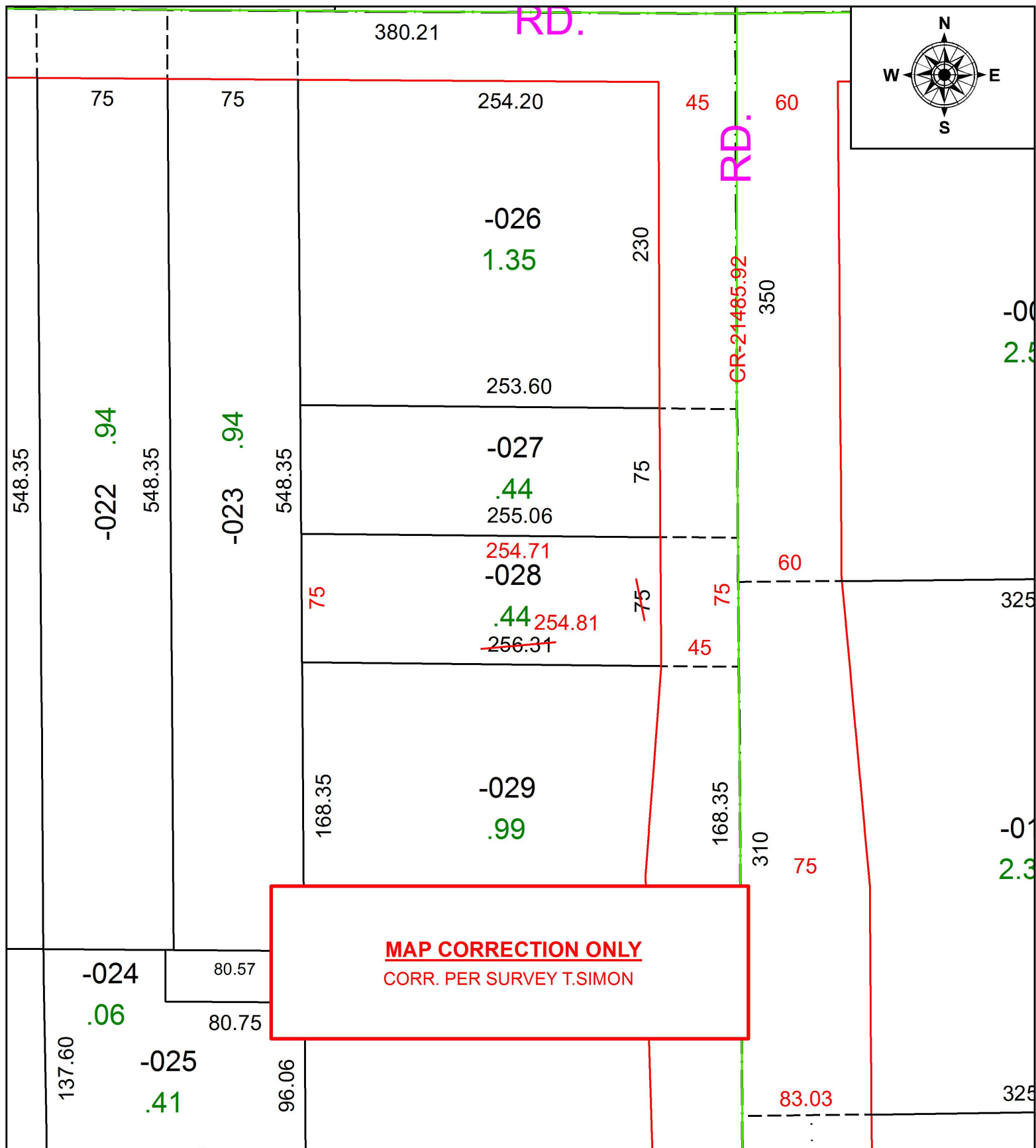


PARENT PARCEL: 02-02-013-101-028

CHILD PARCEL: XX-XX-XXX-XXX-XXX

STARTING POINT: INTERSECTION OF C/L OF MEISTER RD. AND C/L OF S.R.58

17-03744-D



SPLITS/DEEDS PROCESSED
 LORAIN COUNTY TAX MAP DEPARTMENT
 226 MIDDLE AVE. ELYRIA, OH

SURVEYED BY: THOMAS A. SIMON
 CLOSURE: 1: 236,923
 MAP PAGE(S): 2-02-013
 APPROVED BY: RRM DATE: 9-15-17
 SCALE: 1" = 75 PRIOR INSTRUMENT: 20060129013