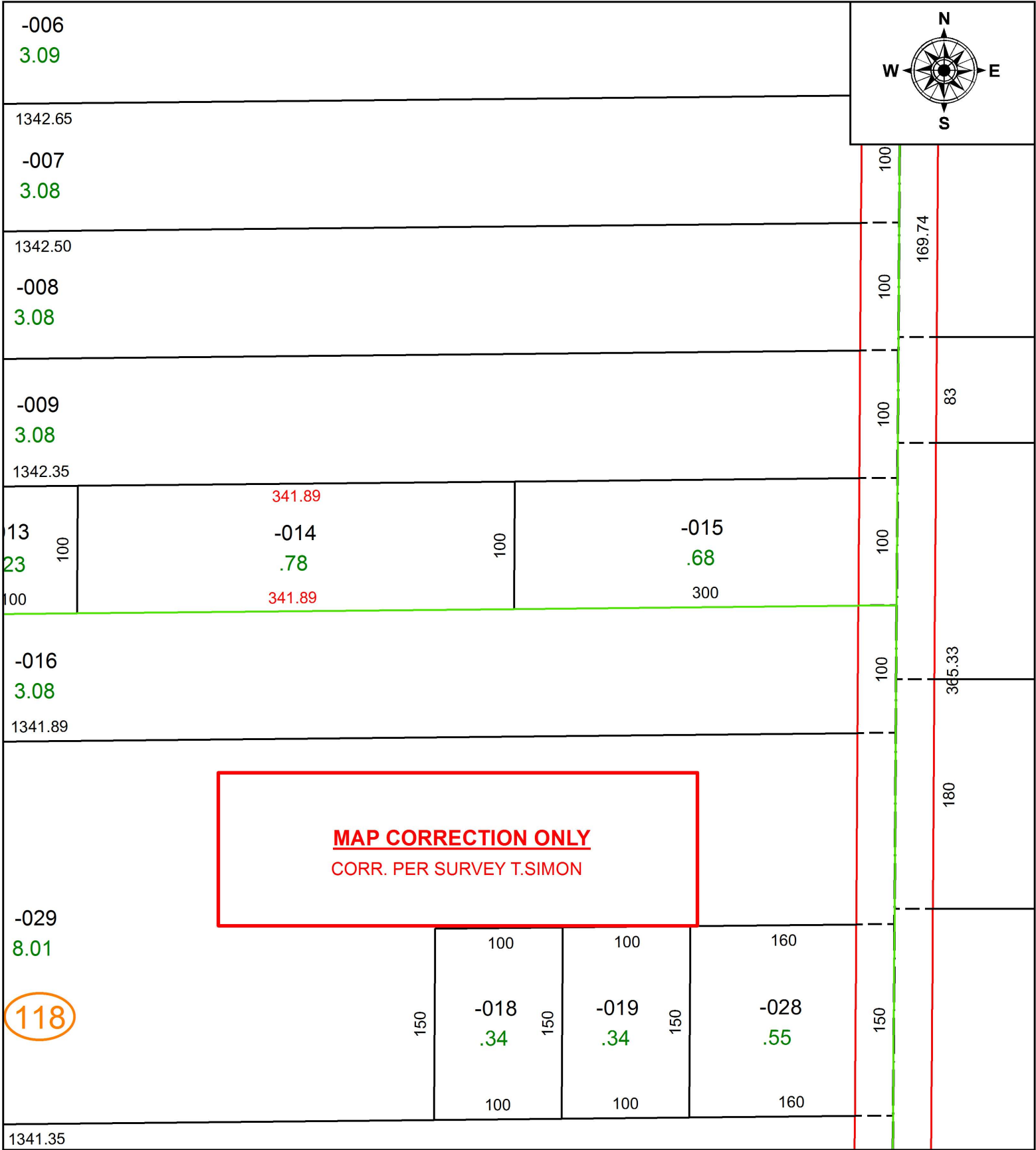


PARENT PARCEL: 10-00-008-118-014

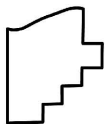
CHILD PARCEL: XX-XX-XXX-XXX-XXX

STARTING POINT: INTERSECTION OF C/L OF BUTTERNUT RIDGE RD. AND C/L OF MIDDLE AVE.

17-03742-D



118



SPLITS/DEEDS PROCESSED
LORAIN COUNTY TAX MAP DEPARTMENT
226 MIDDLE AVE. ELYRIA, OH

SURVEYED BY: THOMAS A. SIMON
CLOSURE: 1: 2147483648
MAP PAGE(S): 10-00-008
APPROVED BY: RRM DATE: 9-13-17
SCALE: 1" = 100' PRIOR INSTRUMENT: 20160580627