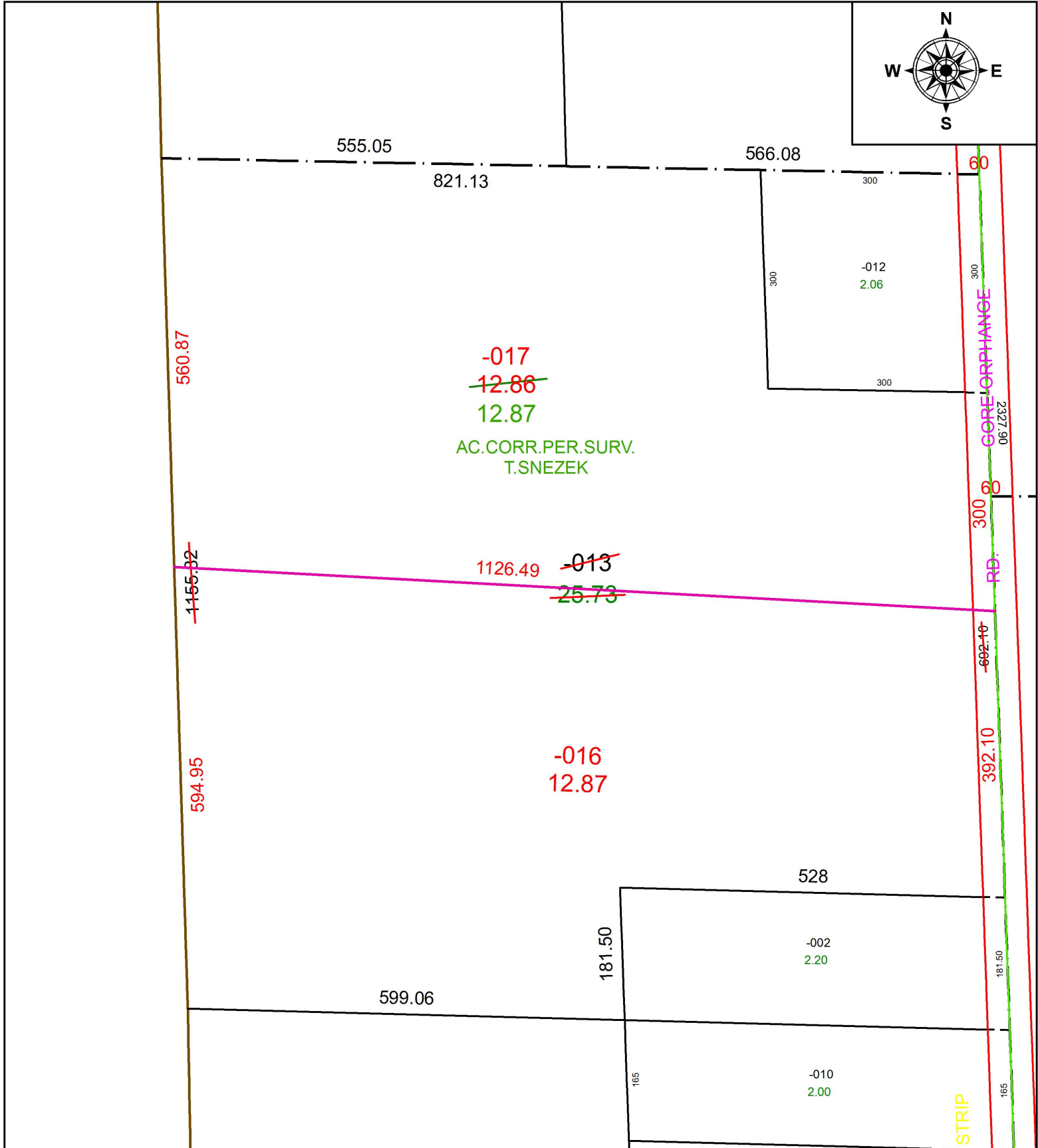


PARENT PARCEL: 13-20-020-000-013

CHILD PARCEL: 13-20-020-000-016, -017

STARTING POINT: INTERSECTION OF C/L OF GORE ORPHANAGE RD. AND C/L OF S.R.303

17-03740



SPLITS/DEEDS PROCESSED
 LORAIN COUNTY TAX MAP DEPARTMENT
 226 MIDDLE AVE. ELYRIA, OH

SURVEYED BY: THOMAS M.SNEZEK

CLOSURE: 1: 3,500,113

MAP PAGE(S): 13-E

APPROVED BY: RRM DATE: 10-26-17

SCALE: 1" = 175 PRIOR INSTRUMENT: 201505546165