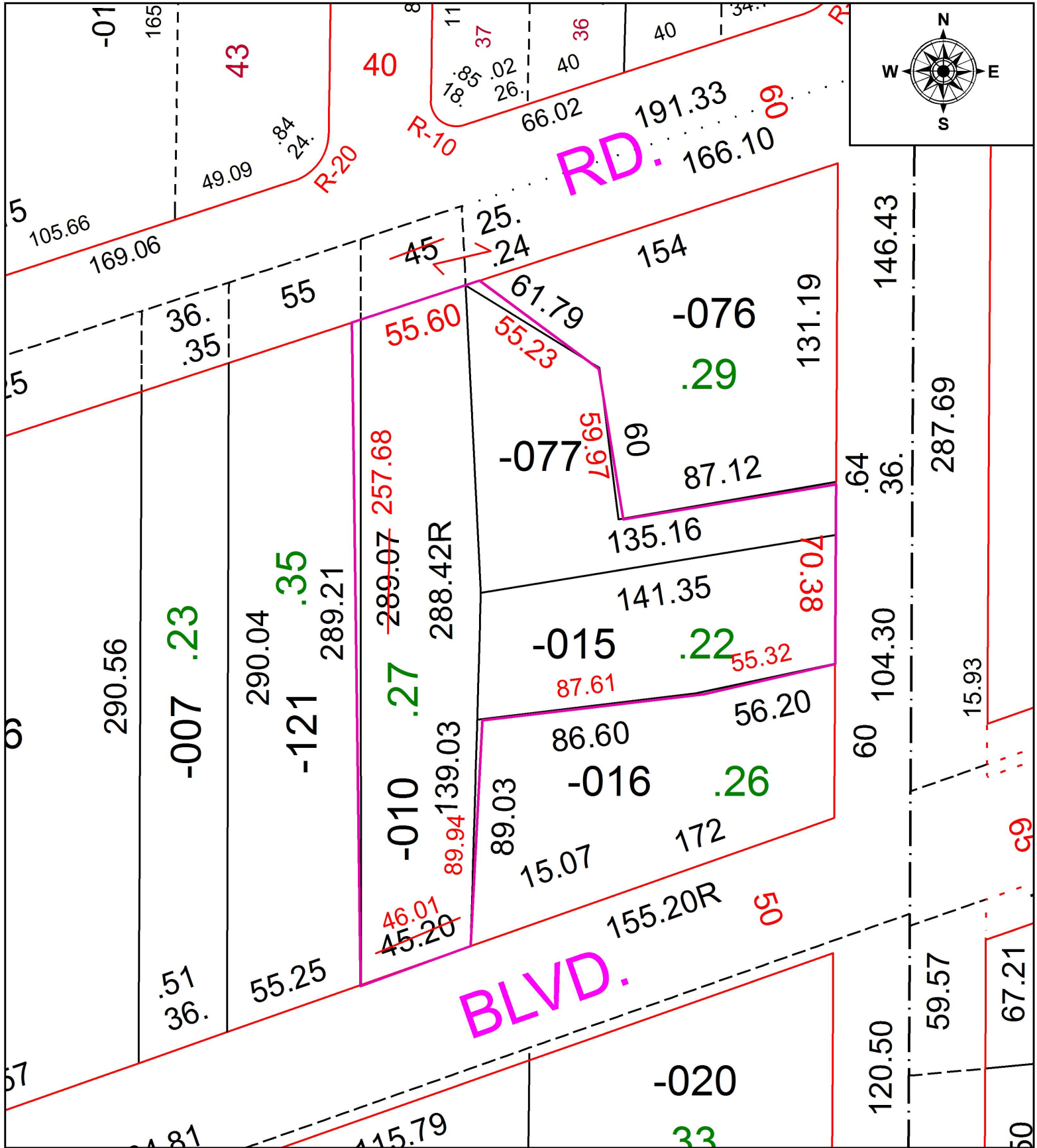


PARENT PARCEL: 04-00-006-135-010, -015, & -077

CHILD PARCEL: SHERIFF SALE CAN'T CHANGE P.P.N.'S -UPDATE LEGAL BEFORE NEXT TRANSFER - COMBINATION -

STARTING POINT: NORTH R.O.W. OF ELECTRIC BLVD. & WEST R.O.W. OF MOORE RD.

17-03739-C



**SPLITS/DEEDS PROCESSED**

LORAIN COUNTY TAX MAP DEPARTMENT  
226 MIDDLE AVE. ELYRIA, OH

SURVEYED BY: MICHAEL F. FELDBUSCH

CLOSURE: 1: 97,577

MAP PAGE(S): 04-00-006

APPROVED BY: TJS DATE: 9/12/17

SCALE: 1" = 50' PRIOR INSTRUMENT: 2008-0238994